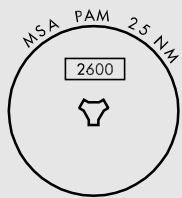
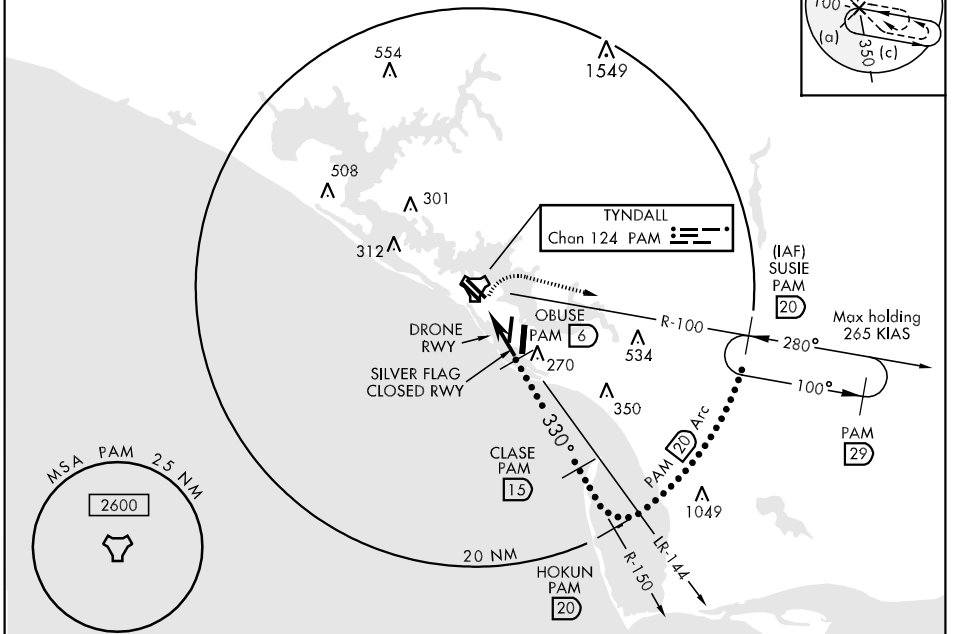
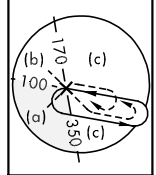


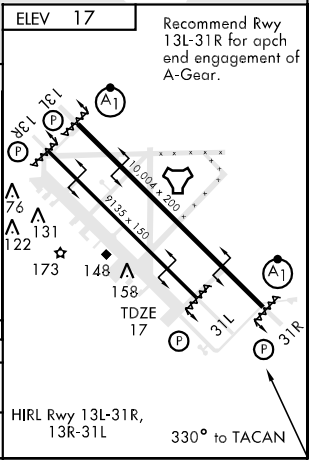
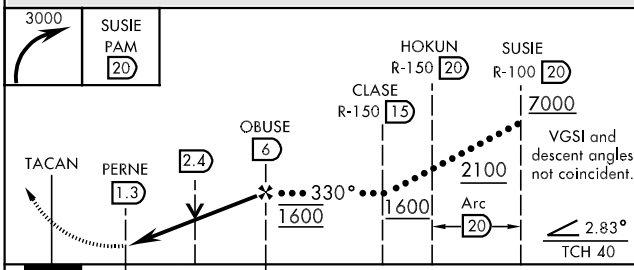
TACAN PAM Chan <b>124</b>	APCH CRS <b>330°</b>	Rwy Idg TDZE <b>17</b> Arpt Elev <b>17</b>	JAL-312 [USAF]	TYNDALL AFB (KPAM)
------------------------------	-------------------------	--	----------------	--------------------

MISSED APPROACH: Climbing right turn to 3000 direct SUSIE (PAM R-100/20 DME) and hold.

ATIS ★ <b>254.4</b>	TYNDALL APP CON <b>125.2 392.1</b> (N abv 5000') <b>119.1 379.3</b> (N blw 5000') <b>124.15 307.8</b> (S abv 5000') <b>119.775 338.35</b> (S blw 5000')	TYNDALL TOWER ★ <b>133.95 263.15</b>	GND CON <b>121.9 259.3</b>	CLNC DEL <b>118.05 289.4</b>	ASR/PAR
------------------------	---	---	-------------------------------	---------------------------------	---------



EMERG SAFE ALT 100 NM 3300



CATEGORY	C	D	E
S-31L	460-1½ 443 (500-1¼)	460-1½	443 (500-1½)
CIRCLING	560-1½ 543 (600-1½)	580-2 563 (600-2)	620-2½ 603 (700-2¼)

SE-3, 22 OCT 2009 to 19 NOV 2009

SE-3, 22 OCT 2009 to 19 NOV 2009