

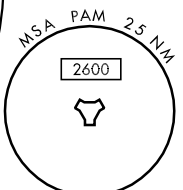
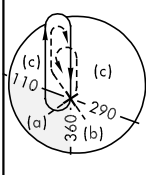
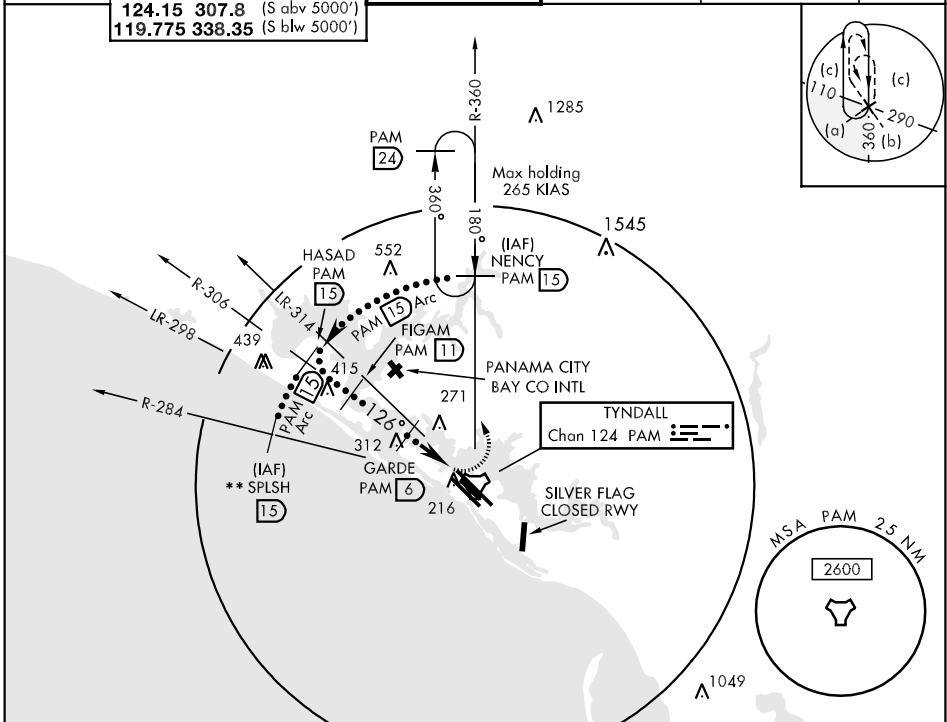
TACAN PAM Chan 124	APCH CRS 126°	Rwy ldg 10,004 TDZE 14 Arpt Elev 17	JAL-312 [USAF]	TYNDALL AFB (KPAM)
------------------------------	-------------------------	--	----------------	--------------------

▼ * When ALS inop, increase CAT CD RVR to 60 and vis to 1½ miles, CAT E vis to 1¾ miles.
 ** RADAR required for entry from SPLSH

 ALSF-1

 MISSED APPROACH: Climbing left turn to 3000 direct NENCY (PAM R-360/15 DME) and hold.

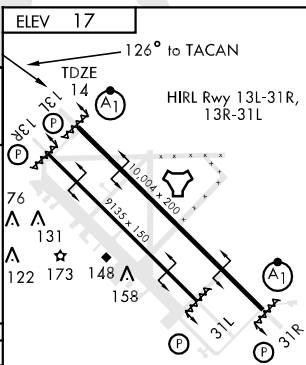
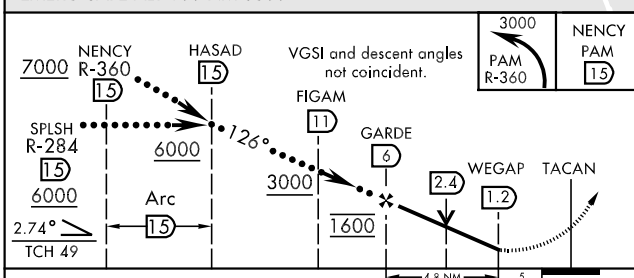
ATIS ★ 254.4	TYNDALL APP CON 125.2 392.1 (N abv 5000') 119.1 379.3 (N blw 5000') 124.15 307.8 (S abv 5000') 119.775 338.35 (S blw 5000')	TYNDALL TOWER ★ 133.95 263.15	GND CON 121.9 259.3	CLNC DEL 118.05 289.4	ASR/PAR
------------------------	---	---	-------------------------------	---------------------------------	---------



SE-3, 22 OCT 2009 to 19 NOV 2009

SE-3, 22 OCT 2009 to 19 NOV 2009

EMERG SAFE ALT 100 NM 3300



CATEGORY	C	D	E
S-TAC-13L*	520/50	506 (600-1)	520/60 506 (600-1¼)
CIRCLING	560-1½ 543 (600-1½)	580-2 563 (600-2)	620-2¼ 603 (700-2¼)

Recommend Rwy 13L-31R for apch and engagement of A-Gear.