

LOC I-PAM 110.1	APCH CRS 315°	Rwy Idg 10,004 TDZE Arprt Elev 17
---------------------------	-------------------------	---

JAL-312 [USAF]

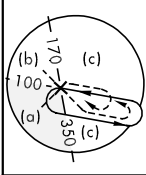
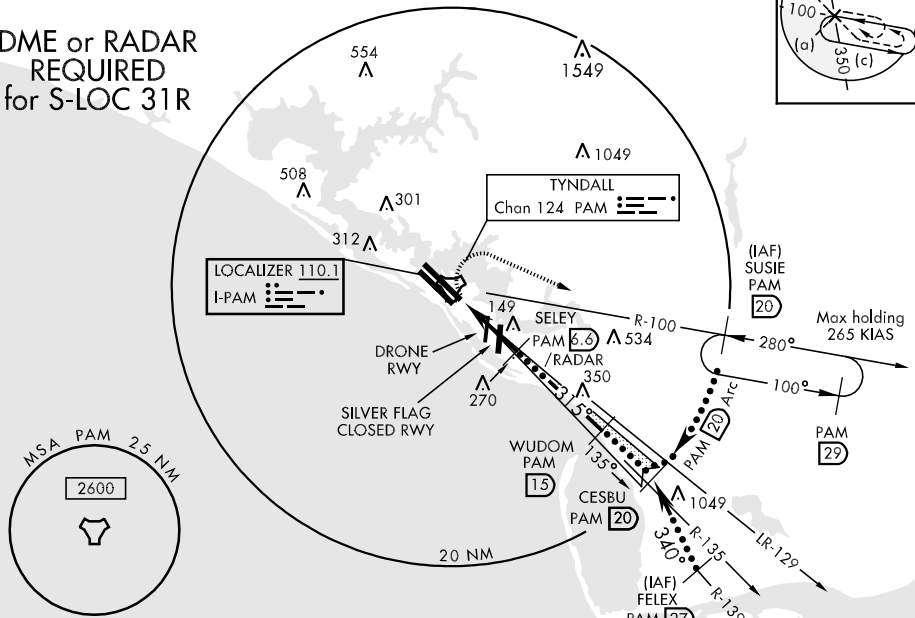
TYNDALL AFB (KPAM)

▼ * When ALS inop, increase RVR to 40 and vis to ¾ mile.
 ** When ALS inop, increase CAT CD RVR to 60 and vis to 1 ¼ miles, CAT E vis to 1 ½ miles.

ALSF-1 MISSED APPROACH: Fly runway heading and climb to 700 then climbing right turn to 3000 direct SUSIE (PAM R-100/20 DME) and hold.

ATIS ★ 254.4	TYNDALL APP CON 125.2 392.1 (N obv 5000') 119.1 379.3 (N blw 5000') 124.15 307.8 (S obv 5000') 119.775 338.35 (S blw 5000')	TYNDALL TOWER ★ 133.95 263.15	GND CON 121.9 259.3	CLNC DEL 118.05 289.4	ASR/PAR
------------------------	---	---	-------------------------------	---------------------------------	---------

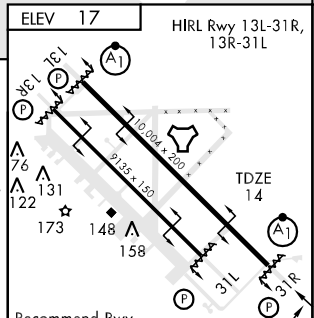
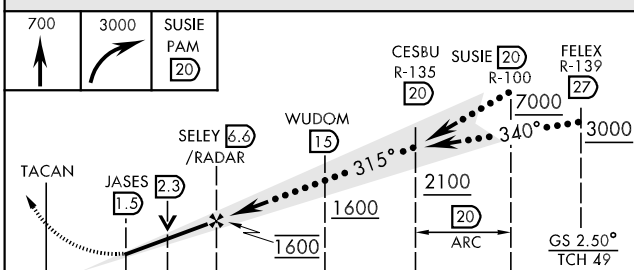
DME or RADAR
REQUIRED
for S-LOC 31R



SE-3, 22 OCT 2009 to 19 NOV 2009

SE-3, 22 OCT 2009 to 19 NOV 2009

EMERG SAFE ALT 100 NM 3300



CATEGORY	C	D	E
S-ILS 31R*	214/24 200 (200-½)		
S-LOC 31R**	420/40 406 (500-¾)	420/50 406 (500-1)	
CIRCLING	560-1 ½ 543 (600-1½)	580-2 563 (600-2)	620-2 ¼ 603 (700-2¼)

LOC FAF to MAP 5.1 NM					
Knots	120	140	160	180	200
Min:Sec	2:33	2:11	1:55	1:42	1:32