

LOC I-TYF 111.5	APCH CRS 135°	Rwy Idg 10,004 TDZE Arpt Elev 17
---------------------------	-------------------------	--

JAL-312 [USAF]

TYNDALL AFB (KPAM)

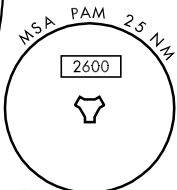
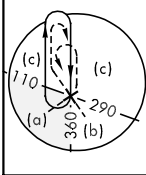
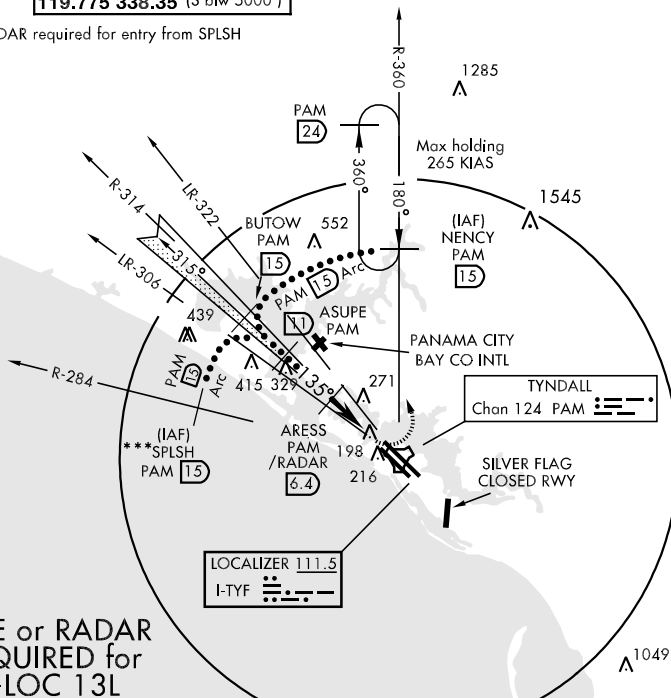
▽ * When ALS inop, increase RVR to 40 and vis to ¾ mile.
 ** When ALS inop, increase CAT C RVR to 60 and vis to 1¼ mile, CAT D vis to 1½, CAT E vis to 1¾ miles.



MISSED APPROACH: Fly runway heading and climb to 700, then climbing left turn to 3000 direct NENCY (PAM R-360/15 DME) and hold.

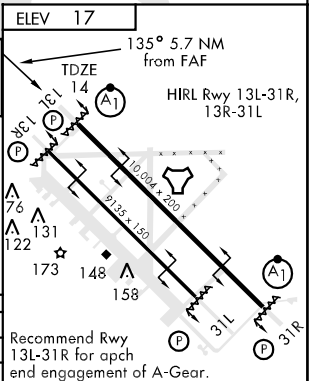
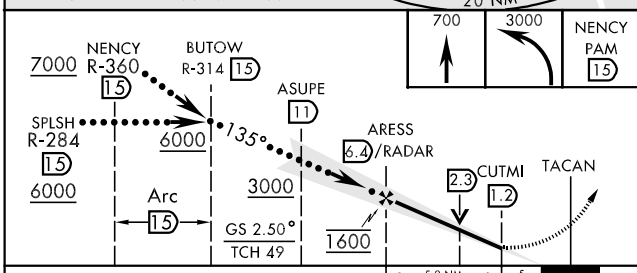
ATIS ★ 254.4	TYNDALL APP CON 125.2 392.1 (N abv 5000') 119.1 379.3 (N blw 5000') 124.15 307.8 (S abv 5000') 119.775 338.35 (S blw 5000')	TYNDALL TOWER ★ 133.95 263.15	GND CON 121.9 259.3	CLNC DEL 118.05 289.4	ASR/PAR
------------------------	---	---	-------------------------------	---------------------------------	---------

*** RADAR required for entry from SPLSH



DME or RADAR REQUIRED for S-LOC 13L

EMERG SAFE ALT 100 NM 3300



CATEGORY	C	D	E
	214/24	200	(200-1/2)
S-ILS 13L *	480/40	480/50	480/60
S-LOC 13L **	466 (500-¾)	466 (500-1)	466 (500-1¼)
CIRCLING	560-1½	580-2	620-2¼
	543 (600-1½)	563 (600-2)	603 (700-2¼)

Recommend Rwy 13L-31R for apch end engagement of A-Gear.

LOC FAF to MAP 5.2 NM					
Knots	120	140	160	180	200
Min:Sec	2:36	2:14	1:57	1:44	1:34

SE-3, 22 OCT 2009 to 19 NOV 2009

SE-3, 22 OCT 2009 to 19 NOV 2009