

PALMDALE, CALIFORNIA

# HI-TACAN RWY 25

PALMDALE REGIONAL USAF PLANT 42 (KPMDD)

TACAN PMD  
Chan **92**

APCH CRS  
**247°**

Rwy Ldg **12,002**  
TDZE **2503**  
Arprt Elev **2543**

JAL-310 [USAF]

▼ \* Circling S of Rwy 7-25 not authorized for CAT E aircraft.

MISSED APPROACH: Climbing right turn to 5000 via PMD R-298 to FISCH INT and hold.

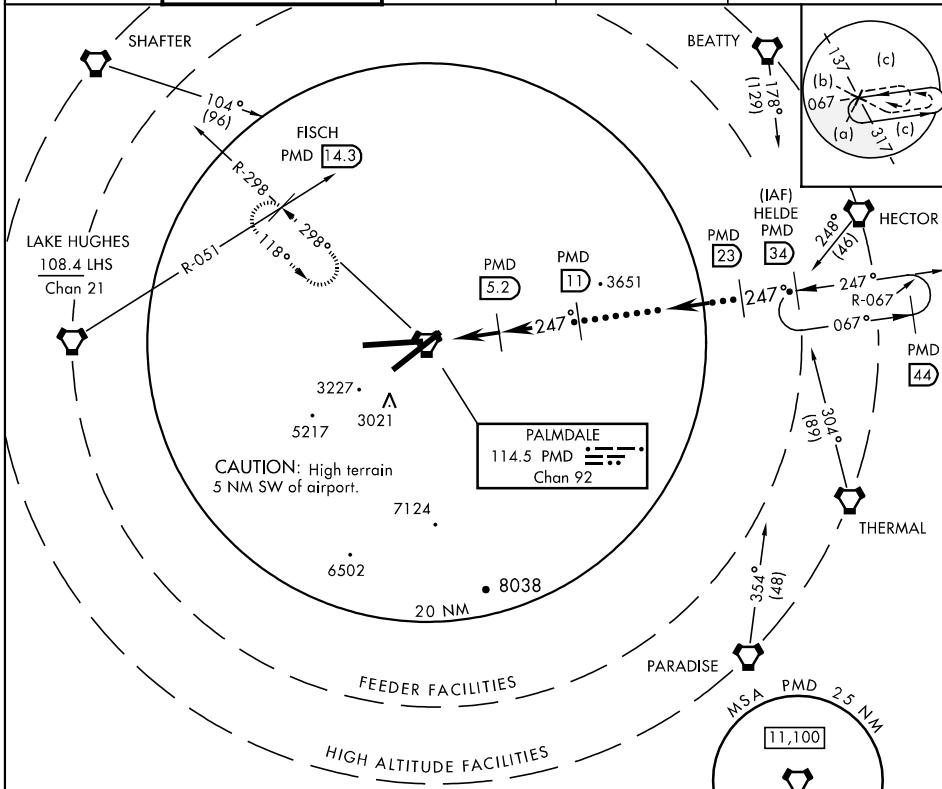
JOSHUA APP CON  
**124.55 363.0**

PALMDALE TOWER \*  
**123.7 317.6**

GND CON  
**121.9 348.6**

CTAF  
**123.7**

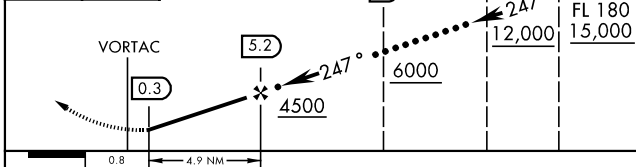
RADAR VECTURING ASOS  
**118.275**



EMERG SAFE ALT 100 NM 13,500



ELEV 2543



| CATEGORY   | C                             | D                             | E                             |
|------------|-------------------------------|-------------------------------|-------------------------------|
| S-25       | 2900-1<br>397 (400-1)         | 2900-1 1/4<br>397 (400-1 1/4) | 2900-1 1/2<br>397 (400-1 1/2) |
| CIRCLING * | 3000-1 1/2<br>457 (500-1 1/2) | 3100-2                        | 557 (600-2)                   |

HIRL Rwy 7-25 247° 5.7 NM from FAF

PALMDALE, CALIFORNIA  
06047

34°38'N-118°05'W

PALMDALE REGIONAL/USAF PLANT 42 (KPMDD)

# HI-TACAN RWY 25

SW-3, 22 OCT 2009 to 19 NOV 2009

SW-3, 22 OCT 2009 to 19 NOV 2009