

VOR/DME RWY 25

ORLANDO/EXECUTIVE (ORL)

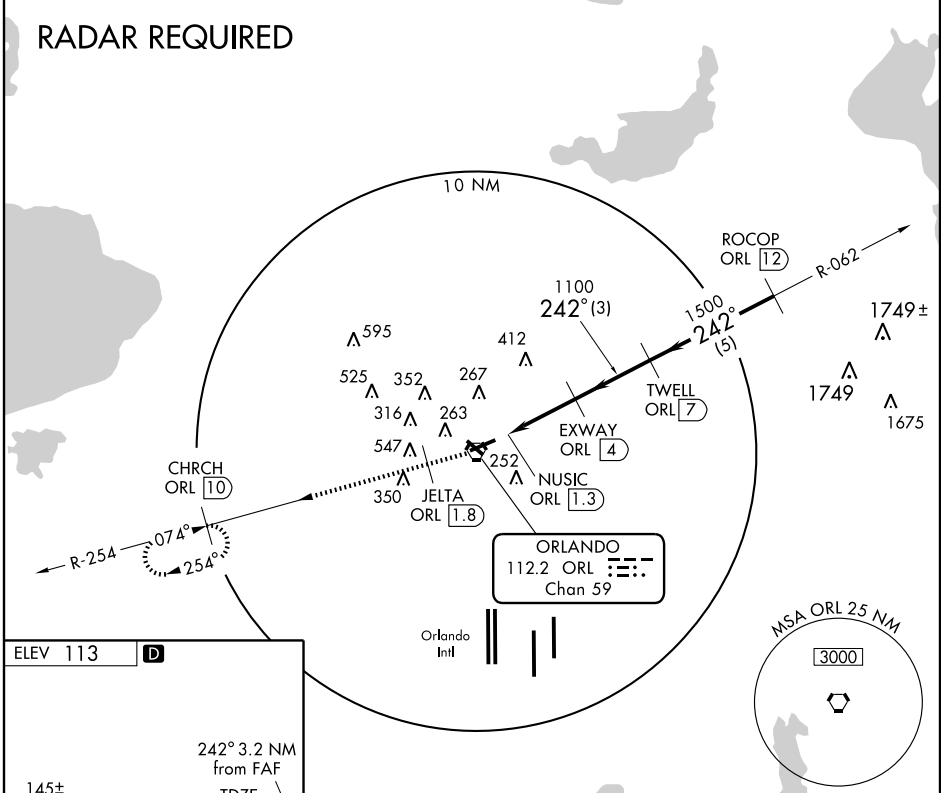
VORTAC ORL 112.2 Chan 59	APP CRS 242°	Rwy Idg 6004 TDZE 113 Apt Elev 113
--	------------------------	---

⚠ In minimum visibility conditions, bright lights on highway ½ mile south of airport may be mistaken for runway lights.

MISSED APPROACH: Climb to 1500 maximum altitude via ORL R-254 to JELTA/1.8 DME then climb to 1600 via ORL R-254 to CHRCH/10 DME and hold.

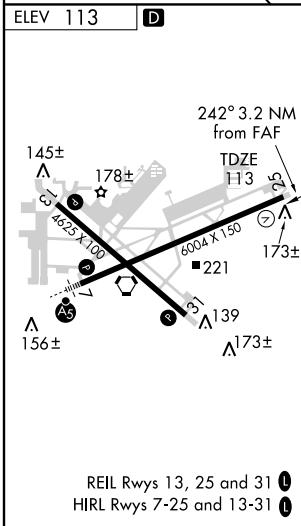
ATIS 127.25	ORLANDO APP CON 124.8 351.9	EXECUTIVE TOWER* 118.7(CTAF) 239.0	GND CON 121.4 239.0	CLNC DEL 128.45	UNICOM 122.95
-----------------------	---------------------------------------	---	-------------------------------	---------------------------	-------------------------

RADAR REQUIRED



SE-3, 22 OCT 2009 to 19 NOV 2009

SE-3, 22 OCT 2009 to 19 NOV 2009



	1500 ↑ ORL R-254 112.2	JELTA ORL 1.8	1600 ↑ ORL R-254	CHRCH ORL 10	TWELL ORL 7	ROCOP ORL 12
	VORTAC	NUSIC ORL 1.3	ORL 1.9	EXWAY ORL 4	1500	2700
	2.77° TCH 46		VGSI and descent angles not coincident.			
	0.5	0.7	2.1 NM	3 NM	5 NM	
CATEGORY	A	B	C	D		
S-25	520-1	407 (500-1)	520-1¼	407 (500-1¼)		
CIRCLING	580-1	467 (500-1)	620-1½ 507 (600-1½)	860-2½ 747 (800-2½)		