

RNAV (GPS) RWY 7


ORLANDO/EXECUTIVE (ORL)

APP CRS	Rwy Idg	5703
070°	TDZE	109
	Apt Elev	113

▽ GPS or RNP-0.3 Required. DME/DME RNP-0.3 NA. In minimum visibility conditions, bright lights on highway ½ mile south of airport may be mistaken for runway lights.

△NA

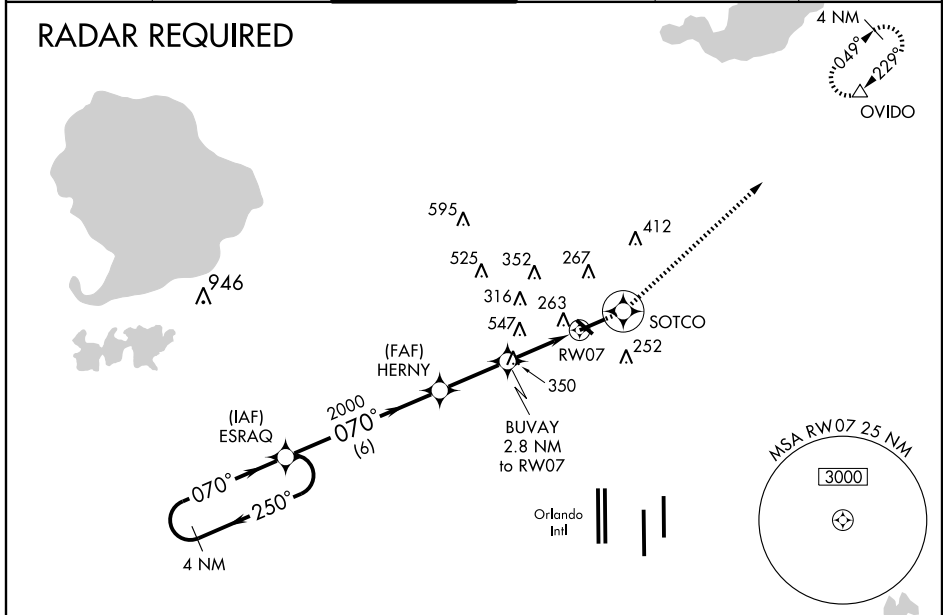
MALSR



NOTE: A descent to 1200 may be required when executing an early missed approach.
MISSED APPROACH: Climb to 1200 maximum altitude direct SOTCO WP, then climb to 1500 direct OVIDO WP and hold.

ATIS	ORLANDO APP CON	EXECUTIVE TOWER ★	GND CON	CLNC DEL	UNICOM
127.25	124.8 351.9	118.7(CTAF) 239.0	121.4 239.0	128.45	122.95

RADAR REQUIRED



SE-3, 22 OCT 2009 to 19 NOV 2009

SE-3, 22 OCT 2009 to 19 NOV 2009

