

APP CRS 250°	Rwy Idg 6004
	TDZE 113
	Apt Elev 113

RNAV (GPS) RWY 25

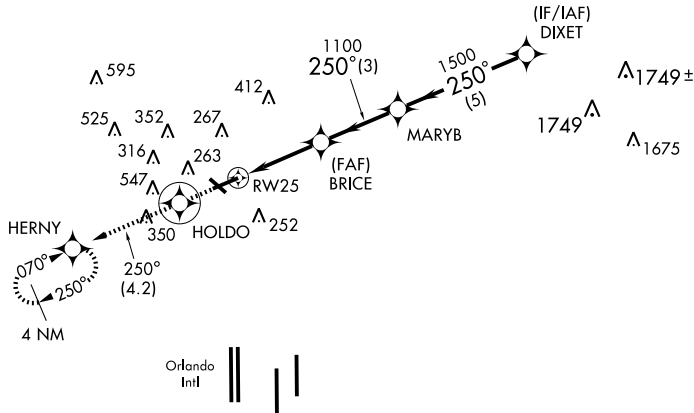
ORLANDO/EXECUTIVE (ORL)

▽ GPS or RNP-0.3 Required. DME/DME RNP-0.3 NA.
△NA In minimum visibility conditions, bright lights on highway 1/2 mile south of airport may be mistaken for runway lights.

MISSED APPROACH: Climb to 1500 maximum altitude direct HOLDO WP then climb to 1600 via 250° track to HERNY WP and hold.

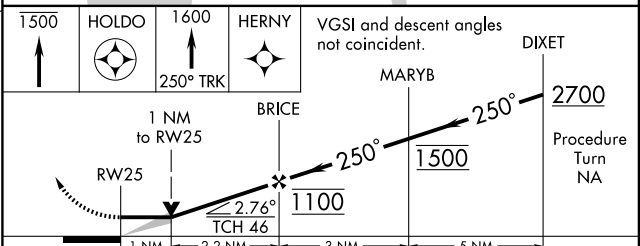
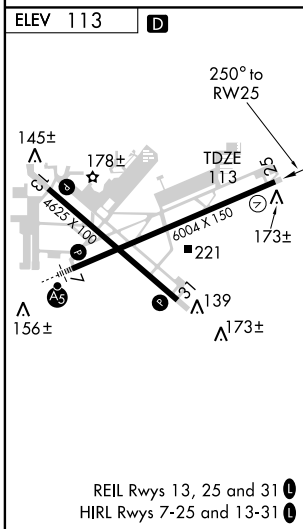
ATIS 127.25	ORLANDO APP CON 124.8 351.9	EXECUTIVE TOWER ★ 118.7(CTAF) 239.0	GND CON 121.4 239.0	CLNC DEL 128.45	UNICOM 122.95
-----------------------	---------------------------------------	---	-------------------------------	---------------------------	-------------------------

RADAR REQUIRED



SE-3, 22 OCT 2009 to 19 NOV 2009

SE-3, 22 OCT 2009 to 19 NOV 2009



CATEGORY	A	B	C	D
LNAV MDA	480-1 367 (400-1)			480-1¼ 367 (400-1¼)
CIRCLING	580-1 467 (500-1)		620-1½ 507 (600-1½)	860-2½ 747 (800-2½)