

# LOC BC RWY 25

ORLANDO/EXECUTIVE (ORL)

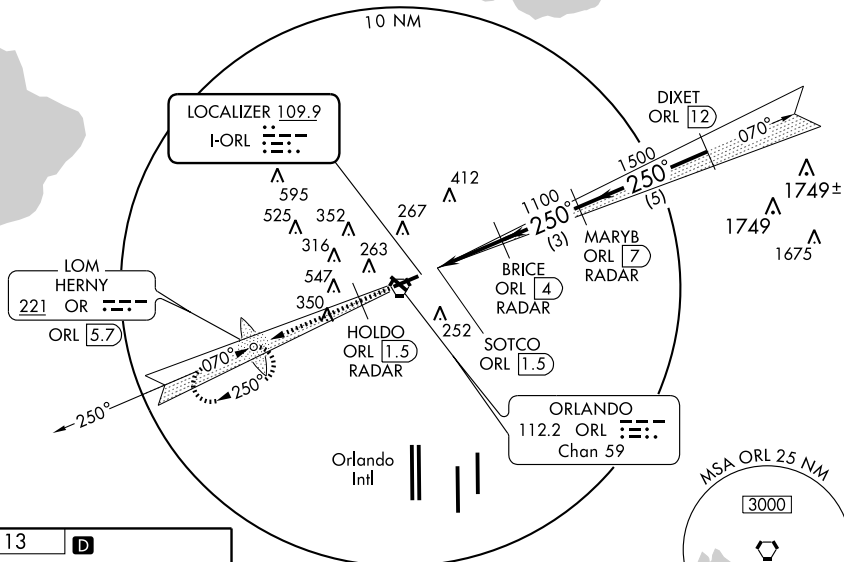
LOC I-ORL <b>109.9</b>	APP CRS <b>250°</b>	Rwy Idg 6004	TDZE 113
		Apt Elev 113	

**⚠ RADAR or DME REQUIRED.**  
 In minimum visibility conditions, bright lights on highway 1/2 mile south of airport may be mistaken for runway lights. Disregard glide slope indications.

**MISSED APPROACH:** Climb to 1500 maximum altitude via I-ORL W course to HOLDO/ORL 1.5 DME/RADAR then climb to 1600 via I-ORL W course to HERNY LOM/ORL 5.7 DME and hold.

ATIS <b>127.25</b>	ORLANDO APP CON <b>124.8 351.9</b>	EXECUTIVE TOWER ★ <b>118.7(CTAF) 239.0</b>	GND CON <b>121.4 239.0</b>	CLNC DEL <b>128.45</b>	UNICOM <b>122.95</b>
-----------------------	---------------------------------------	---	-------------------------------	---------------------------	-------------------------

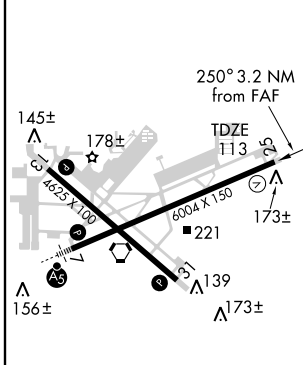
## RADAR REQUIRED BACK COURSE



SE-3, 22 OCT 2009 to 19 NOV 2009

SE-3, 22 OCT 2009 to 19 NOV 2009

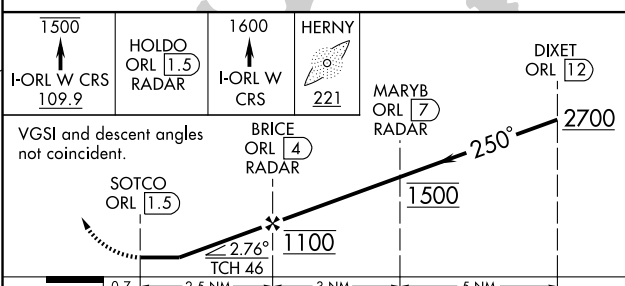
ELEV 113	<b>D</b>
----------	----------



REIL Rwy 13, 25 and 31  
 HIRL Rwy 7-25 and 13-31

FAF to MAP 2.5 NM

Knots	60	90	120	150	180
Min:Sec	2:30	1:40	1:15	1:00	0:50



CATEGORY	A	B	C	D
S-25	480-1 367 (400-1)		480-1¼ 367 (400-1¼)	
CIRCLING	580-1 467 (500-1)		620-1½ 507 (600-1½) 860-2½ 747 (800-2½)	