


# RNAV (GPS) RWY 36

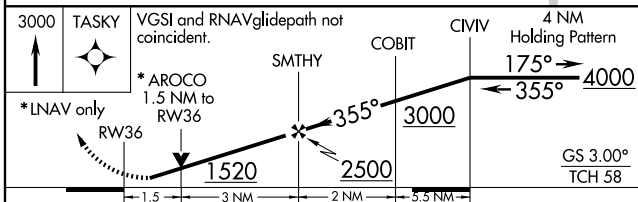
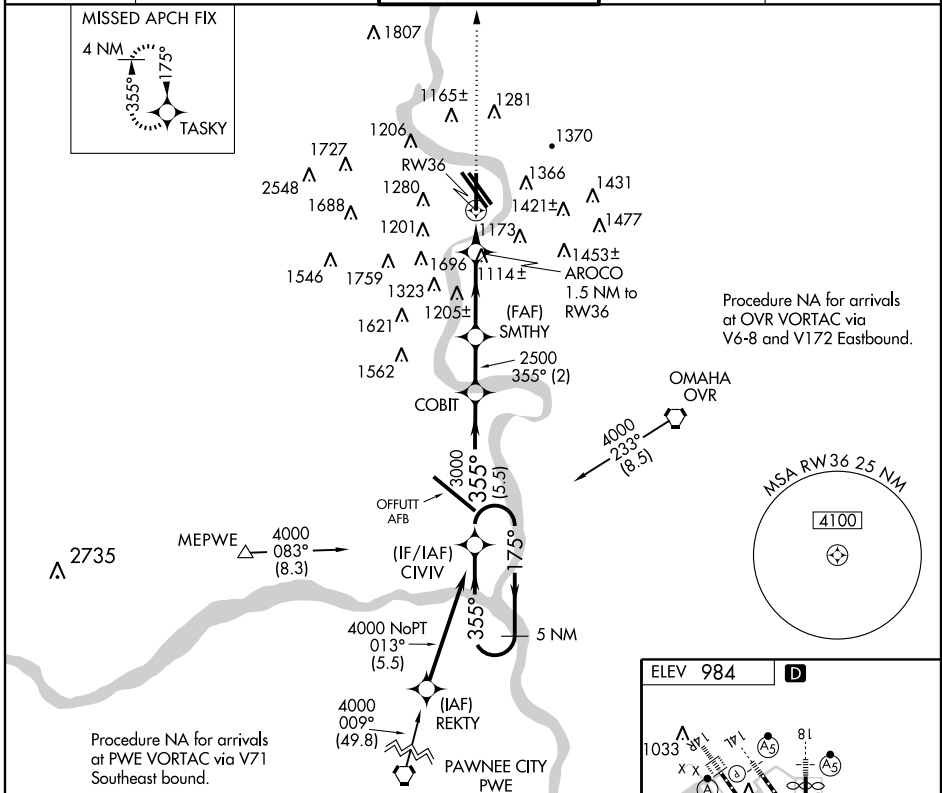
OMAHA/EPPLEY AIRFIELD (OMA)

WAAS Ch <b>70317</b> W36A	APP CRS <b>355°</b>	Rwy Idg <b>8153</b> TDZE <b>979</b> Apt Elev <b>984</b>
---------------------------------	------------------------	---

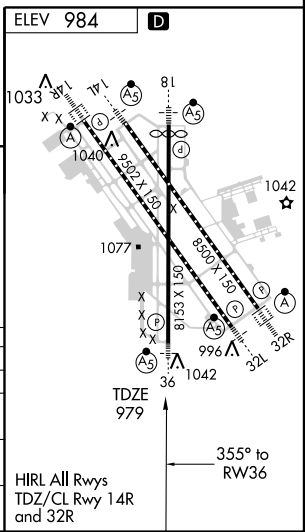
**⚠** Baro-VNAV NA below -16°C (4°F). DME/DME RNP-0.3 NA.  
**⚠** For inoperative MALSR increase LNAV Cats. A and B visibility to 1 mile. Inoperative table does not apply to LPV.

**MALSR**  
  
**MISSED APPROACH:** Climb to 3000 direct TASKY and hold.

ATIS <b>120.4</b>	OMAHA APP CON <b>124.5 263.0</b> EAST <b>120.1 354.05</b> WEST	OMAHA TOWER <b>132.1 256.9</b>	GND CON <b>121.9</b>	CLNC DEL <b>119.9</b>
----------------------	--	-----------------------------------	-------------------------	--------------------------



CATEGORY	A	B	C	D
LPV DA		1229-3/4	250 (300-3/4)	
LNAV/VNAV DA		1473-1 1/4	494 (500-1 1/4)	
LNAV MDA	1420-3/4	441 (500-3/4)		1420-1 441 (500-1)
CIRCLING	1660-1 3/4 676 (700-1 3/4)	1680-1 3/4 696 (700-1 3/4)	1720-2 736 (800-2)	1720-2 1/4 736 (800-2 1/4)



NC-2, 22 OCT 2009 to 19 NOV 2009

NC-2, 22 OCT 2009 to 19 NOV 2009