

# RNAV (GPS) RWY 32L

OMAHA/EPPLEY FIELD (OMA)

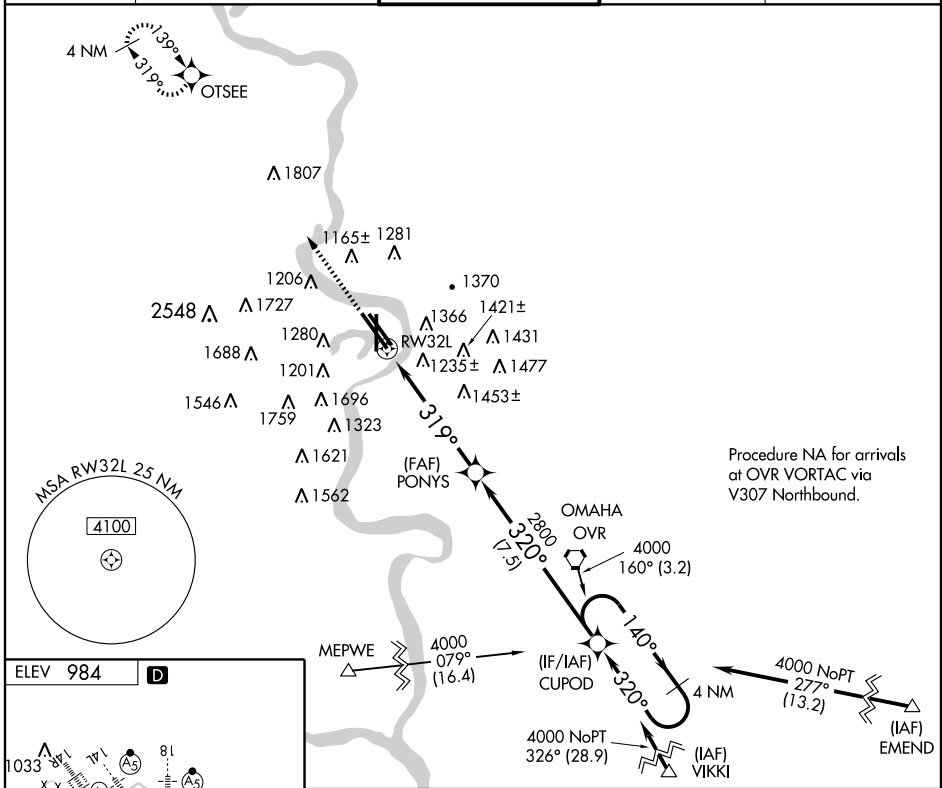
WAAS Ch <b>60917</b> W32A	APP CRS <b>319°</b>	Rwy Idg <b>9502</b> TDZE <b>980</b> Apt Elev <b>984</b>
---------------------------------	------------------------	---

**⚠** Baro-VNAV NA below -16°C (4°F). For inoperative MALSRS increase LPV visibility all Cats to RVR 5000.  
**⚠** DME/DME RNP-0.3 NA.



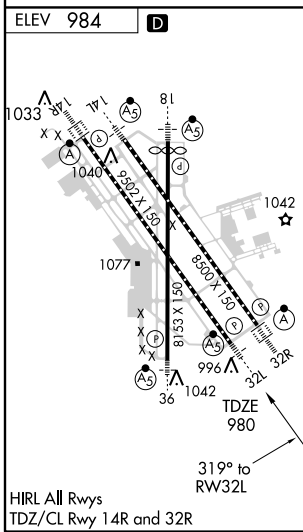
MISSED APPROACH: Climb to 3300 direct OTSEE and hold.

ATIS <b>120.4</b>	OMAHA APP CON <b>124.5 263.0</b> EAST <b>120.1 354.05</b> WEST	OMAHA TOWER <b>132.1 256.9</b>	GND CON <b>121.9</b>	CLNC DEL <b>119.9</b>
----------------------	--	-----------------------------------	-------------------------	--------------------------



NC-2, 22 OCT 2009 to 19 NOV 2009

NC-2, 22 OCT 2009 to 19 NOV 2009



3300	↑	OTSEE	4 NM	CUPOD	Holding Pattern
*LNAV only		*2 NM to RW32L	320°	140°	4000
2800	319°	PONY	2800	320°	GS 3.00°
2000	320°	CUPOD	2000	320°	TCH 51
1400	320°	OMAHA OVR	1400	320°	
4000	160° (3.2)	VIKKI	4000	160° (3.2)	
4000	079° (16.4)	EMEND	4000	079° (16.4)	
4000	277° (13.2)	OTSEE	4000	277° (13.2)	
4000	127° (13.2)	OTSEE	4000	127° (13.2)	

CATEGORY	A	B	C	D
LPV DA		1277-24	297 (300-½)	
LNAV/VNAV DA		1683-2	703 (700-2)	
LNAV MDA	1680/24	700 (700-½)	1680-1½ 700 (700-½)	1680-1¾ 700 (700-1¾)
CIRCLING	1680-2½	696 (700-2½)	1720-2½	736 (800-2½)