


# RNAV (GPS) RWY 18

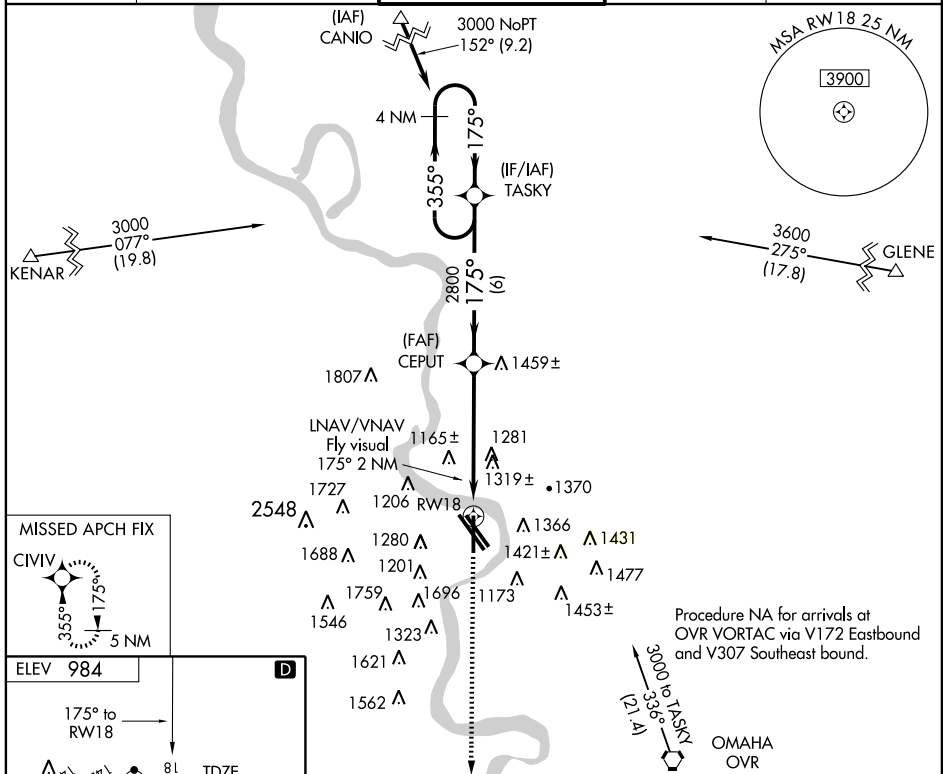
OMAHA/EPPLEY AIRFIELD (OMA)

WAAS Ch <b>65617</b> <b>W18A</b>	APP CRS <b>175°</b>	Rwy Idg <b>8013</b> TDZE <b>981</b> Apt Elev <b>984</b>
--	------------------------	---

**⚠** For inoperative MALSR, increase LPV all Cats visibility to RVR 5000. For uncompensated Baro-VNAV systems, LNAV/VNAV NA below -1.6°C (4°F) or above 47°C (116°F).  
**⚠** Inoperative table does not apply to LNAV/VNAV all Cats. DME/DME RNP-0.3 NA.

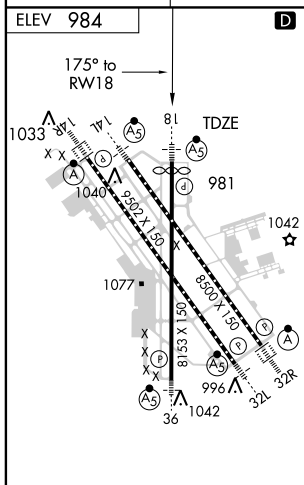
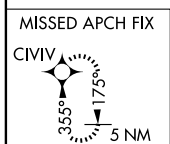
MALSR  MISSED APPROACH: Climb to 3000 direct CIVV and hold.

ATIS <b>120.4</b>	OMAHA APP CON <b>124.5 263.0</b> EAST <b>120.1 354.05</b> WEST	OMAHA TOWER <b>132.1 256.9</b>	GND CON <b>121.9</b>	CLNC DEL <b>119.9</b>
----------------------	--	-----------------------------------	-------------------------	--------------------------

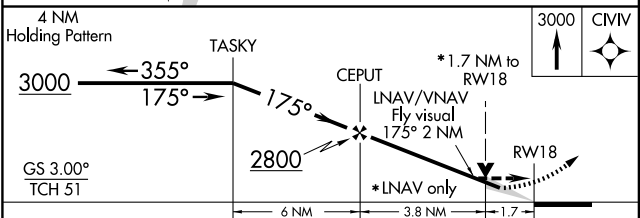


NC-2, 22 OCT 2009 to 19 NOV 2009

NC-2, 22 OCT 2009 to 19 NOV 2009



HIRL All Rwys  
TDZ/CL Rwy 14R and 32R



CATEGORY	A	B	C	D
LPV DA	1261-24 280 (300-½)			
LNAV/VNAV DA	1681-2 700 (700-2)			1681-2¼ 700 (700-2¼)
LNAV MDA	1580/24	599 (600-½)	1580/50 599 (600-1)	1580/60 599 (600-1)
CIRCLING	1660-1 676 (700-1)	1680-1 696 (700-1)	1720-2 736 (800-2)	1720-2¼ 736 (800-2¼)