

OMAHA, NEBRASKA

AL-304 (FAA)

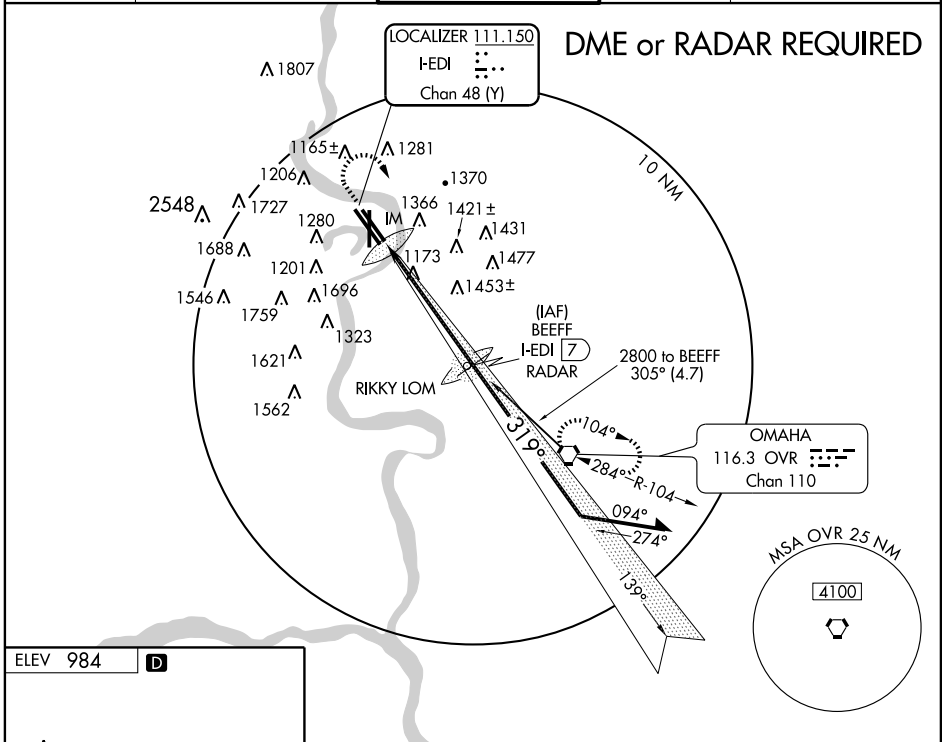
LOC/DME I-EDI <b>111.15</b> Chan 48 (Y)	APP CRS <b>319°</b>	Rwy Idg TDZE Apt Elev	<b>8500</b> <b>984</b> <b>984</b>
---	------------------------	-----------------------------	---

# ILS RWY 32R (CAT II)

OMAHA/ EPPLEY AIRFIELD (OMA)

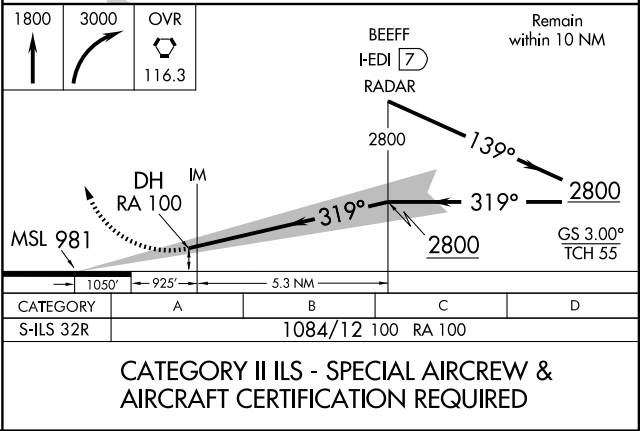
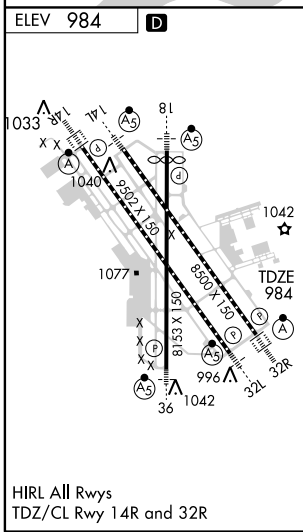
 		MISSED APPROACH: Climb to 1800, then climbing right turn to 3000 direct OVR VORTAC and hold.		
		ATIS <b>120.4</b>	OMAHA APP CON <b>124.5 263.0</b> EAST <b>120.1 354.0</b> WEST	OMAHA TOWER <b>132.1 256.9</b>

ATIS <b>120.4</b>	OMAHA APP CON <b>124.5 263.0</b> EAST <b>120.1 354.0</b> WEST	OMAHA TOWER <b>132.1 256.9</b>	GND CON <b>121.9</b>	CLNC DEL <b>119.9</b>
----------------------	---	-----------------------------------	-------------------------	--------------------------



NC-2, 22 OCT 2009 to 19 NOV 2009

NC-2, 22 OCT 2009 to 19 NOV 2009



**CATEGORY II ILS - SPECIAL AIRCREW & AIRCRAFT CERTIFICATION REQUIRED**

OMAHA, NEBRASKA  
Orig-B 09239

41° 18' N-95° 54' W

OMAHA/ EPPLEY AIRFIELD (OMA)  
**ILS RWY 32R (CAT II)**