

KANSAS CITY DEP CON
118.9 294.7

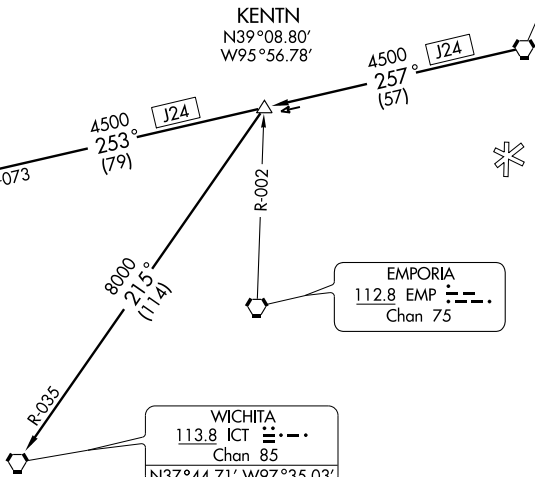
KANSAS CITY
113.25 MCI
Chan 79(Y)
N39°17.12' W94°44.22'

KENTN
N39°08.80'
W95°56.78'

SALINA
117.1 SLN
Chan 118
N38°55.51' W97°37.28'
L-10, H-5

EMPORIA
112.8 EMP
Chan 75

WICHITA
113.8 ICT
Chan 85
N37°44.71' W97°35.03'
L-10-15, H-5



NC-2, 22 OCT 2009 to 19 NOV 2009

NC-2, 22 OCT 2009 to 19 NOV 2009

NOTE: Chart not to scale



DEPARTURE ROUTE DESCRIPTION

Fly assigned heading and altitude for vector to appropriate route. Expect filed altitude 10 minutes after departure.

KENTN TRANSITION (WLDCT2.KENTN): From over MCI VORTAC via MCI R-257 to KENTN INT.

SALINA TRANSITION (WLDCT2.SLN): From over MCI VORTAC via MCI R-257 and SLN R-073 to SLN VORTAC.

WICHITA TRANSITION (WLDCT2.ICT): From over MCI VORTAC via MCI R-257 to KENTN INT, then via ICT R-035 to ICT VORTAC.