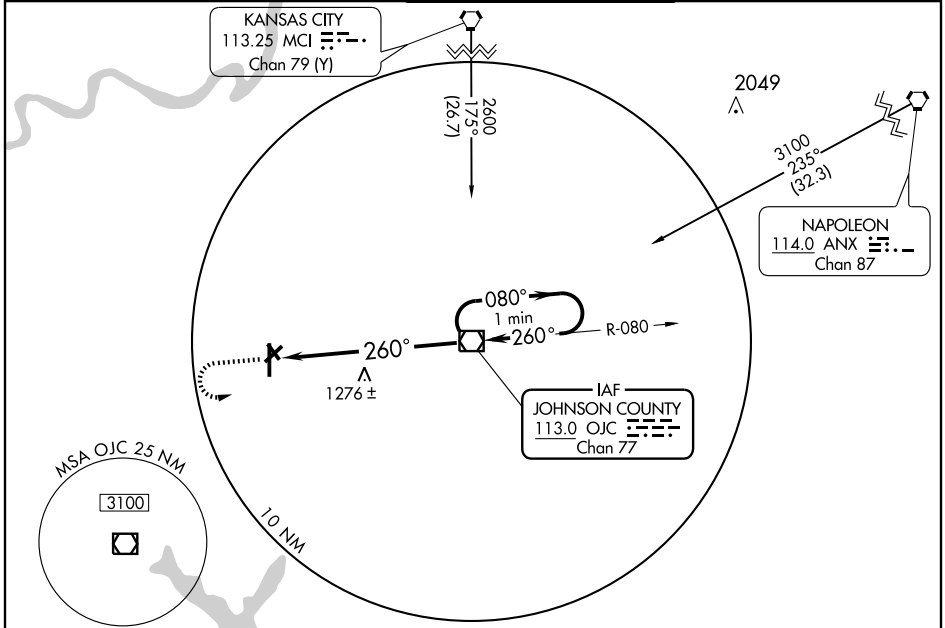


VOR/DME OJC 113.0 Chan 77	APP CRS 260°	Rwy Idg TDZE Apt Elev 1087	N/A N/A 1087
--	------------------------	---	--------------------

⚠ If local altimeter setting not received, use Johnson County Executive altimeter setting and increase all MDAs 20 feet.

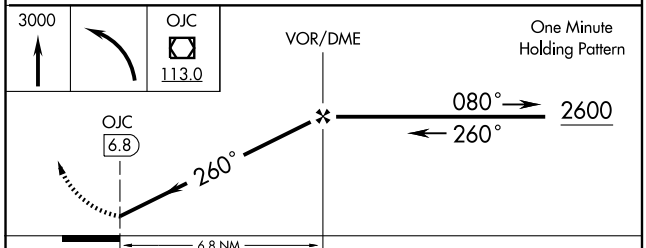
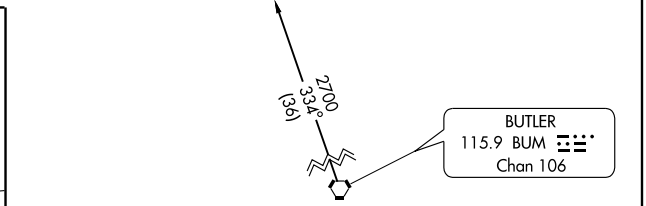
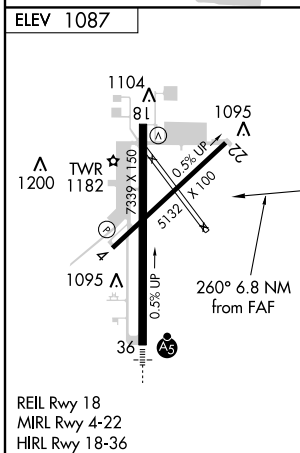
MISSED APPROACH: Climb to 3000 then left turn direct OJC VOR/DME and hold.

ASOS 135.325	KANSAS CITY APP CON 118.9 294.7	NEW CENTURY TOWER * 133.0 (CTAF) 0	GND CON 124.3	UNICOM 122.95
------------------------	---	--	-------------------------	-------------------------



NC-2, 22 OCT 2009 to 19 NOV 2009

NC-2, 22 OCT 2009 to 19 NOV 2009



FAF to MAP 6.8 NM					
Knots	60	90	120	150	180
Min:Sec	6:48	4:32	3:24	2:43	2:16
CATEGORY	A		B		C
CIRCLING	1620-1		533 (600-1)		1620-1½ 533 (600-1½)
					1640-2 553 (600-2)