

OLATHE, KANSAS

AL-302 (FAA)

ILS or LOC RWY 36

OLATHE/NEW CENTURY AIRCENTER (IXD)

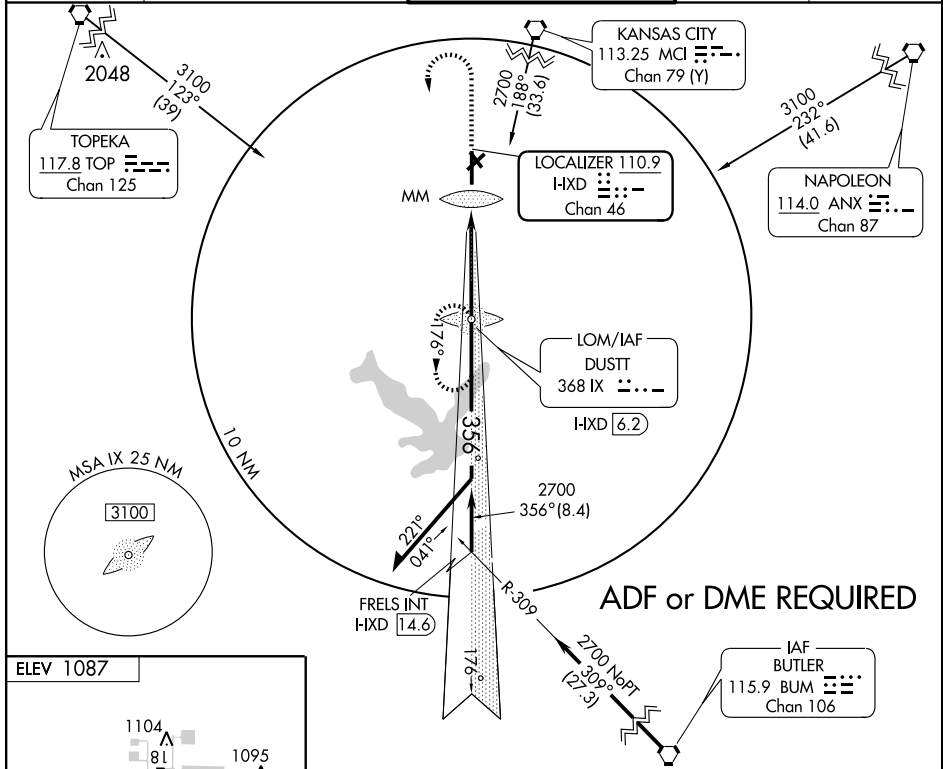
LOC/DME I-IXD 110.9 Chan 46	APP CRS 356°	Rwy Idg 7339 TDZE 1066 Apt Elev 1087
---	------------------------	---

⚠ If local altimeter setting not received, use Johnson County Executive altimeter setting and increase all DA/MDAs 20 feet. VDP NA with Johnson County Executive altimeter setting. ADF required.



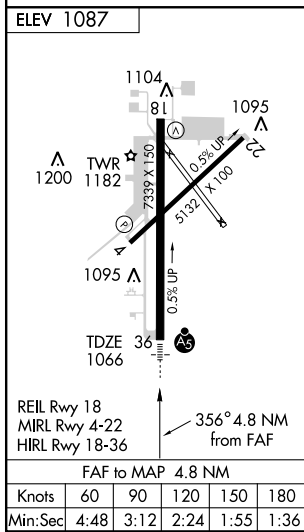
MISSED APPROACH: Climb to 3000 then left turn direct DUST LOM and hold.

ASOS 135.325	KANSAS CITY APP CON 118.9 294.7	NEW CENTURY TOWER * 133.0 (CTAF) 0	GND CON 124.3	UNICOM 122.95
------------------------	---	--	-------------------------	-------------------------



NC-2, 22 OCT 2009 to 19 NOV 2009

NC-2, 22 OCT 2009 to 19 NOV 2009



ELEV 1087	3000	IX 368	LOM HXD [6.2]	Remain within 10 NM
			2668	176°
			2700	356°
			2700	GS 3.00° TCH 55
			1263	
			1.4	
			2.4	
			3.8 NM	
CATEGORY	A	B	C	D
S-ILS 36	1266-½ 200 (200-½)			
S-LOC 36	1440-½ 374 (400-½)			1440-¾ 374 (400-¾)
CIRCLING	1560-1	473 (500-1)	1560-1½ 473 (500-1½)	1640-2 553 (600-2)

OLATHE, KANSAS
Amdt 6A 09239

38°50'N-94°53'W

OLATHE/NEW CENTURY AIRCENTER (IXD)

ILS or LOC RWY 36