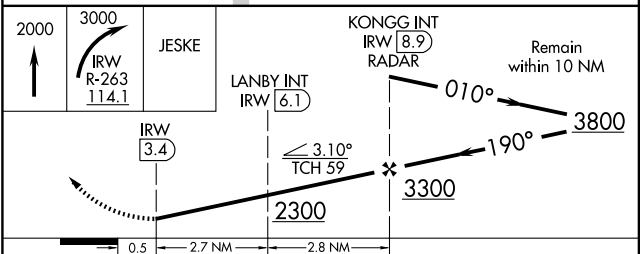
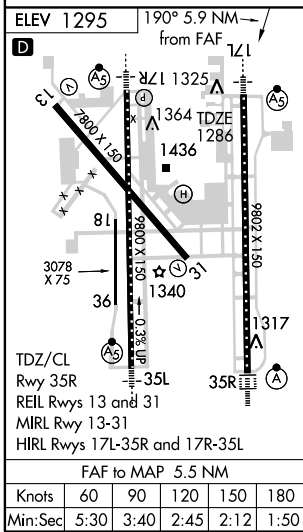
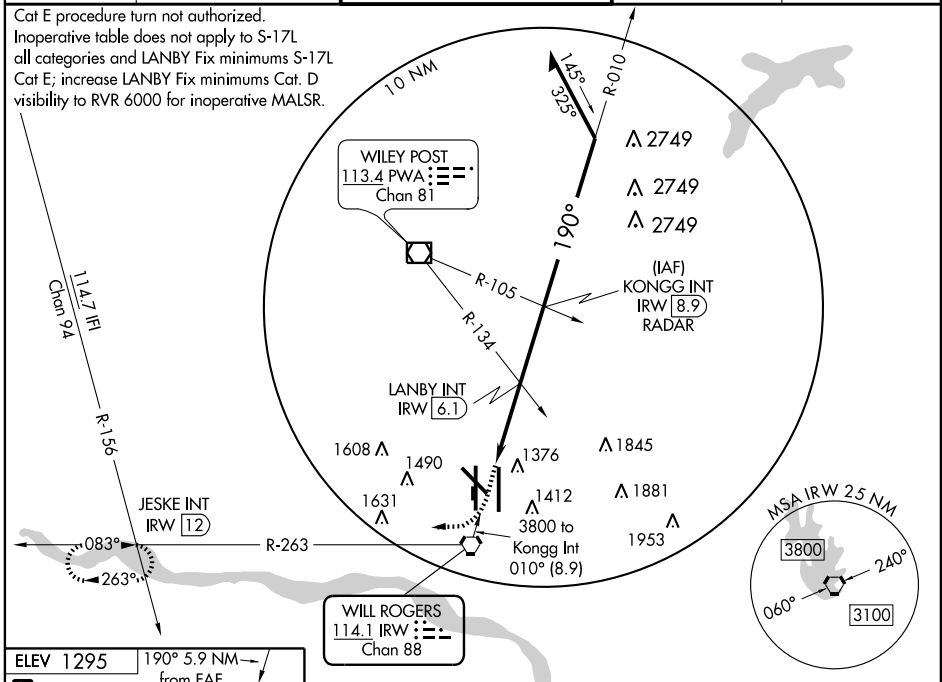


VOR RWY 17L

OKLAHOMA CITY/ WILL ROGERS WORLD (OKC)

VOR IRW 114.1 Chan 88	APP CRS 190°	Rwy Idg TDZE Apt Elev	9802 1286 1295
---	------------------------	-----------------------------	---

ASR	MALS R 	MISSED APPROACH: Climb to 2000 then climbing right turn to 3000 via IRW VORTAC R-263 to JESKE Int and hold.		
ATIS 125.85	OKE CITY APP CON 124.6 266.8	ROGERS TOWER 119.35 269.45	GND CON 121.9 348.6	CLNC DEL 124.35



CATEGORY	A	B	C	D	E
S-17L	2300/60 1014 (1100-1½)	2300-1½ 1014 (1100-1½)		2300-3	1014 (1100-3)
CIRCLING	2300-1¼ 1005 (1100-1¼)	2300-1½ 1005 (1100-1½)		2300-3	1005 (1100-3)
LANBY FIX MINIMUMS					
S-17L	1680/24	394 (400-½)		1680/50 394 (400-1)	1680-1½ 394 (400-1½)
CIRCLING	1760-1	465 (500-1)		1760-1½ 465 (500-1½)	1860-2 565 (600-2)
					2240-3 945 (1000-3)

SC-1, 22 OCT 2009 to 19 NOV 2009

SC-1, 22 OCT 2009 to 19 NOV 2009