

# RNAV (GPS) Z RWY 17L

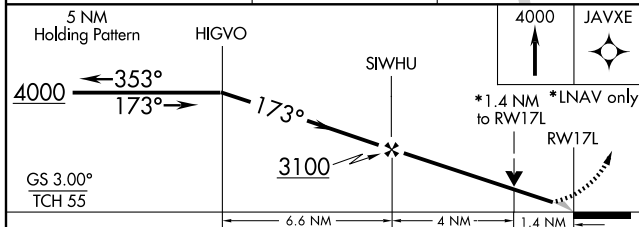
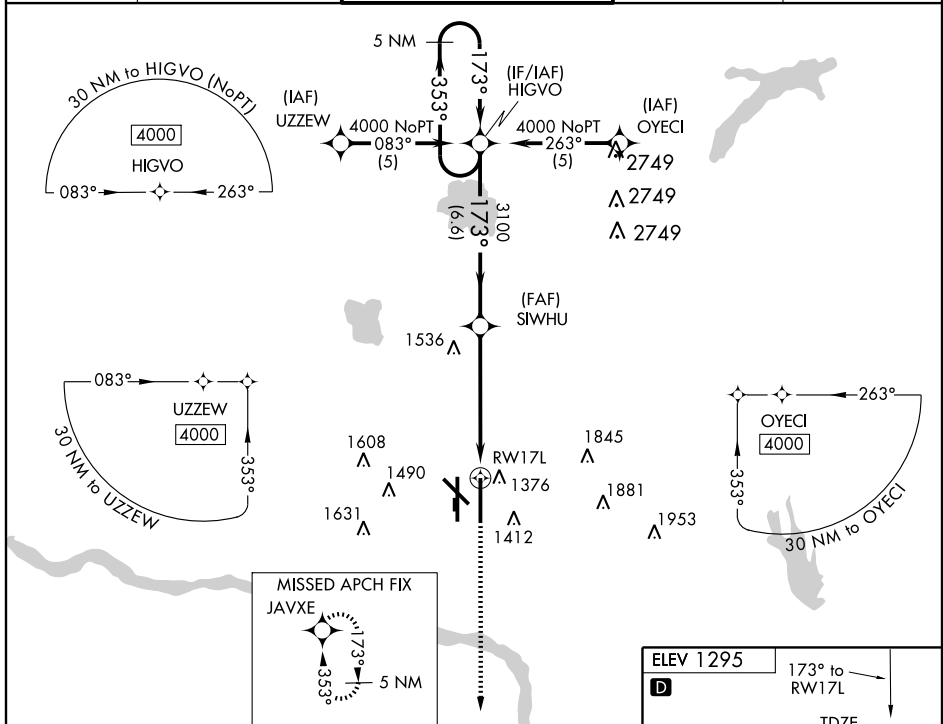
OKLAHOMA CITY/ WILL ROGERS WORLD (OKC)

WAAS CH <b>56503</b> <b>W17A</b>	APP CRS <b>173°</b>	Rwy Idg <b>9802</b> TDZE <b>1286</b> Apt Elev <b>1295</b>
--	------------------------	---

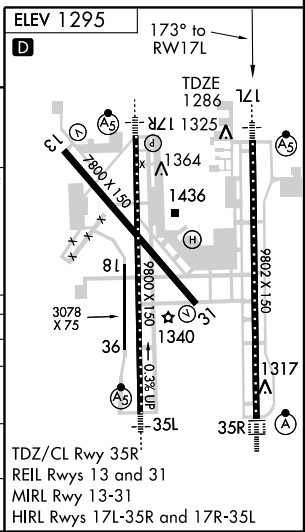
**ASR** For inoperative MALSR, increase LNAV/VNAV Cat D visibility to RVR 5000. For uncompensated Baro-VNAV systems, LNAV/VNAV NA below -17°C (2°F) or above 46°C (114°F). DME/DME RNP-0.3 NA.

**MALSR** MISSED APPROACH: Climb to 4000 direct to JAVXE and hold.

ATIS <b>125.85</b>	OKE CITY APP CON <b>124.6 266.8</b>	ROGERS TOWER <b>119.35 269.45</b>	GND CON <b>121.9 348.6</b>	CLNC DEL <b>124.35</b>
-----------------------	--	--------------------------------------	-------------------------------	---------------------------



CATEGORY	A	B	C	D
LPV DA	1486/24 200 (200-½)			
LNAV/VNAV DA	1610/24	324 (400-½)	1610/40 324 (400-¾)	
LNAV MDA	1800/24	514 (600-½)	1800/50 514 (600-1)	1800/60 514 (600-1½)
CIRCLING	1800-1	505 (600-1)	1800-1½ 505 (600-1½)	1860-2 565 (600-2)



SC-1, 22 OCT 2009 to 19 NOV 2009

SC-1, 22 OCT 2009 to 19 NOV 2009