

# RNAV (GPS) Y RWY 35R

OKLAHOMA CITY/ WILL ROGERS WORLD (OKC)

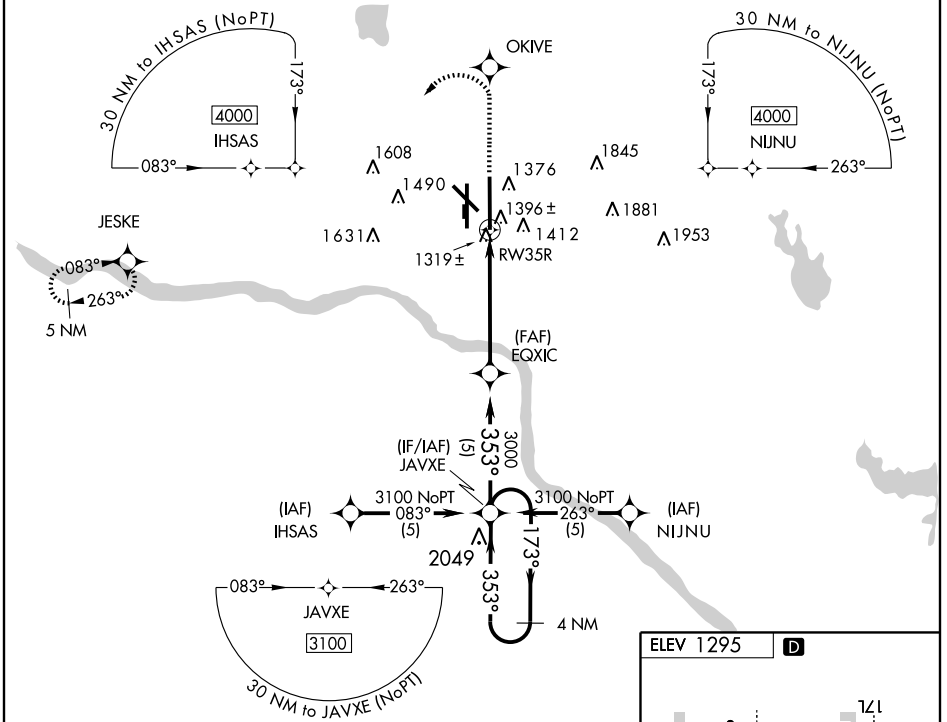
APP CRS	Rwy Idg	<b>9802</b>
<b>353°</b>	TDZE	<b>1294</b>
	Apt Elev	<b>1295</b>

**ASR** For inoperative ALSF, increase LNAV Cat D visibility to RVR 6000. For uncompensated Baro-VNAV systems, LNAV/VNAV NA below -17°C (2°F) or above 46°C (115°F). DME/DME RNP-0.3 NA.



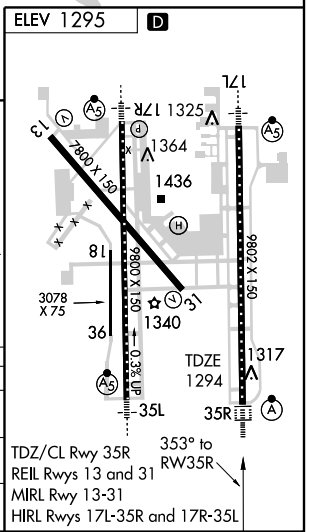
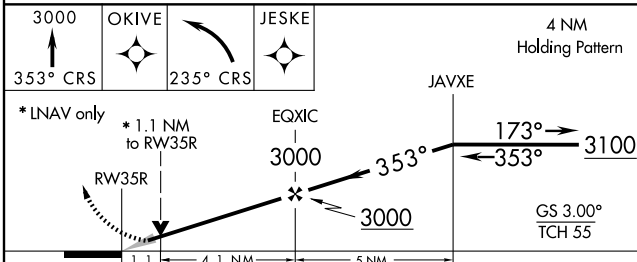
**MISSED APPROACH:** Climb to 3000 via 353° course to OKIVE then left turn via 235° course to JESKE and hold.

ATIS <b>125.85</b>	OKC CITY APP CON <b>124.6 266.8</b>	ROGERS TOWER <b>119.35 269.45</b>	GND CON <b>121.9 348.6</b>	CLNC DEL <b>124.35</b>
-----------------------	--	--------------------------------------	-------------------------------	---------------------------



SC-1, 22 OCT 2009 to 19 NOV 2009

SC-1, 22 OCT 2009 to 19 NOV 2009



CATEGORY	A	B	C	D
LNAV/DA	1628/40		334 (400-¾)	
LNAV MDA	1700/24	406 (500-½)	1700/40	1700/50
			406 (500-¾)	406 (500-1)
CIRCLING	1740-1¼ 445 (500-1¼)	1760-1¼ 465 (500-1¼)	1760-1½ 465 (500-½)	1860-2 565 (600-2)