

RNAV (RNP) Z RWY 35R

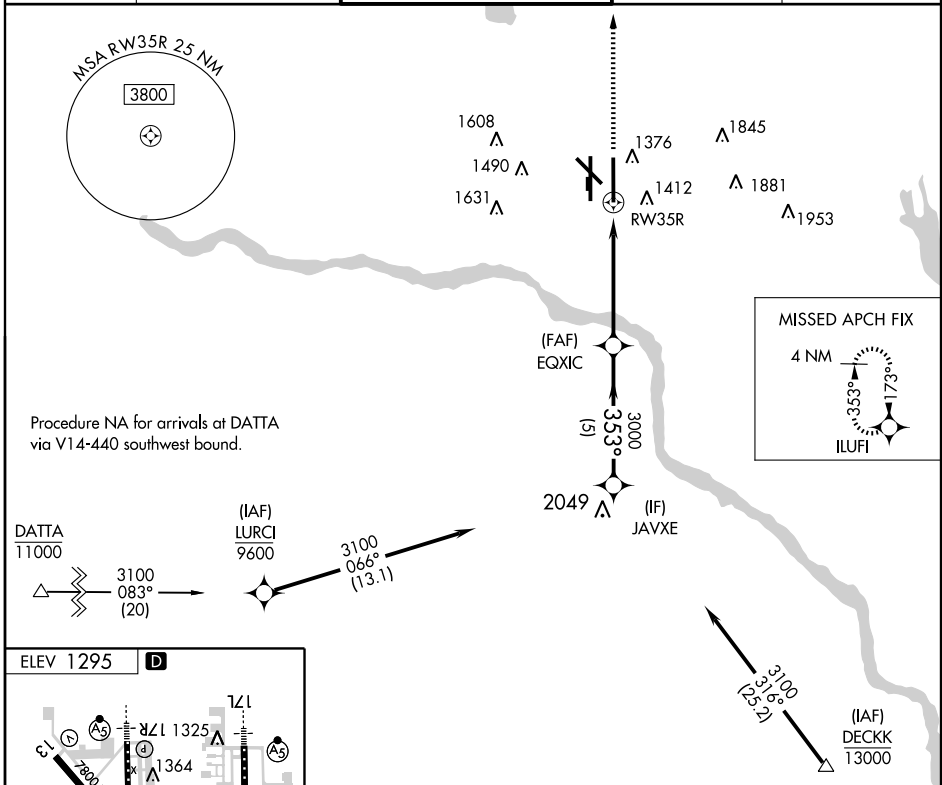
OKLAHOMA CITY/ WILL ROGERS WORLD (OKC)

APP CRS 353°	Rwy Idg 9802 TDZE 1294 Apt Elev 1295
------------------------	---

NA GPS required. For uncompensated Baro-VNAV systems, procedure NA below -12°C (10°F) or above 46°C (115°F). For inoperative ALSF-2, increase RNP 0.30 visibility to RVR 5000 all Cats.
ASR

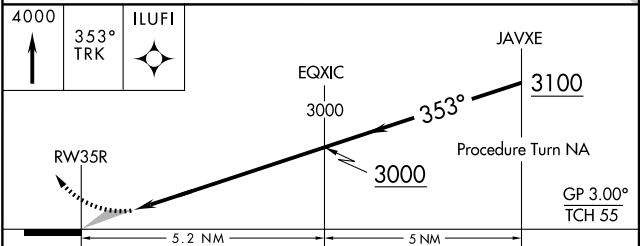
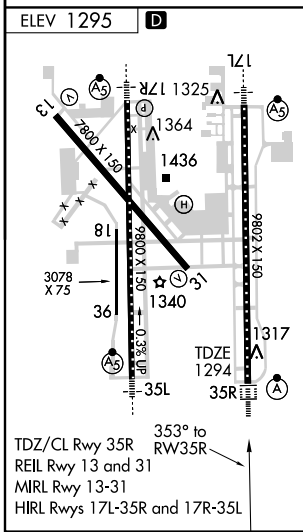
ALSF-2 MISSED APPROACH: Climb to 4000 via 353° track to ILUFI and hold. Continue climb-in-hold to 4000.

ATIS 125.85	OKE CITY APP CON 124.6 266.8	ROGERS TOWER 119.35 269.45	GND CON 121.9 348.6	CLNC DEL 124.35
-----------------------	--	--------------------------------------	-------------------------------	---------------------------



SC-1, 22 OCT 2009 to 19 NOV 2009

SC-1, 22 OCT 2009 to 19 NOV 2009



CATEGORY	A	B	C	D
RNP 0.30 DA		1593/24	299 (300½)	

SPECIAL AIRCRAFT & AIRCREW AUTHORIZATION REQUIRED