

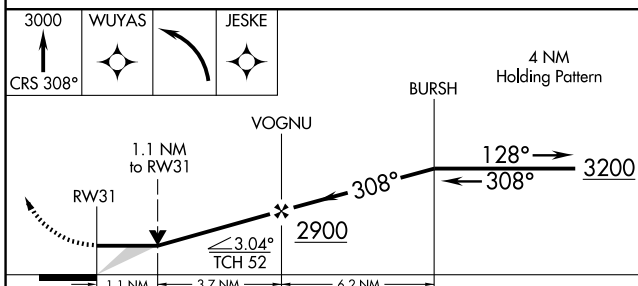
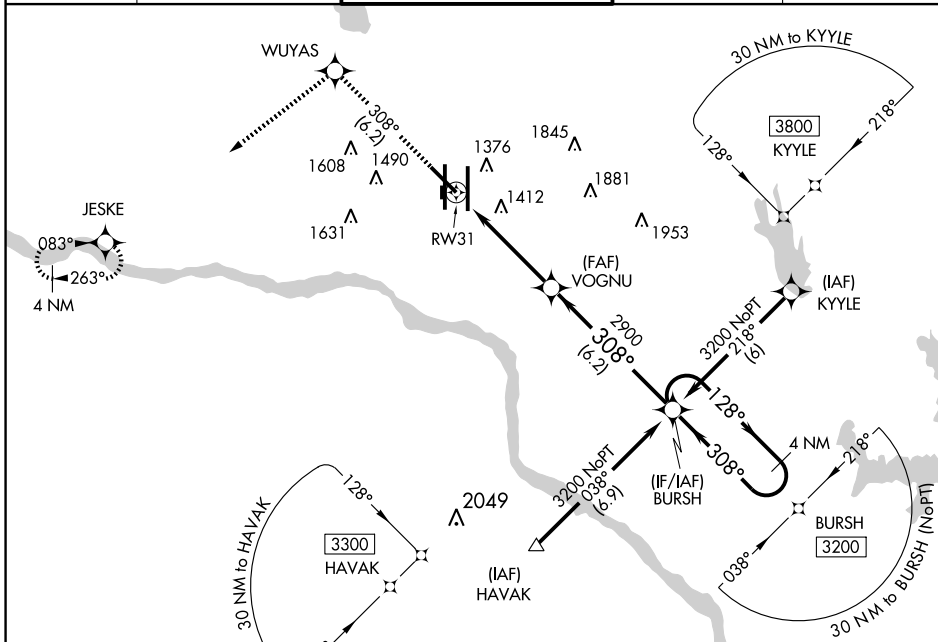
# RNAV (GPS) RWY 31

OKLAHOMA CITY/ WILL ROGERS WORLD (OKC)

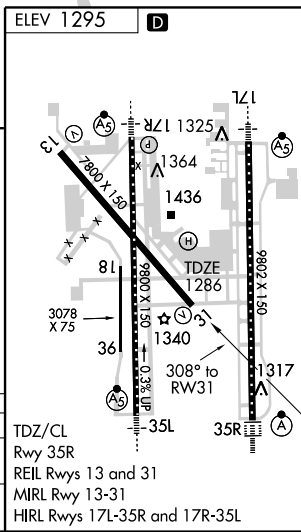
APP CRS <b>308°</b>	Rwy Idg <b>7800</b>
	TDZE <b>1286</b>
	Apt Elev <b>1295</b>

**NA** GPS or RNP-0.3 required. DME/DME RNP-0.3 NA. Straight-in minimums NA at night. **ASR** MISSED APPROACH: Climb to 3000 via 308° course to WUYAS WP, then left turn direct JESKE WP hold.

ATIS <b>125.85</b>	OKE CITY APP CON <b>124.6 266.8</b>	ROGERS TOWER <b>119.35 269.45</b>	GND CON <b>121.9 348.6</b>	CLNC DEL <b>124.35</b>
-----------------------	--	--------------------------------------	-------------------------------	---------------------------



CATEGORY	A	B	C	D
LNVA MDA	1680-1	394 (400-1)		1680-1¼ 394 (400-1¼)
CIRCLING	1740-1 445 (500-1)	1760-1 465 (500-1)	1760-1½ 465 (500-1½)	1860-2 565 (600-2)



SC-1, 22 OCT 2009 to 19 NOV 2009

SC-1, 22 OCT 2009 to 19 NOV 2009