

RNAV (GPS) RWY 17R

OKLAHOMA CITY/WILL ROGERS WORLD (OKC)

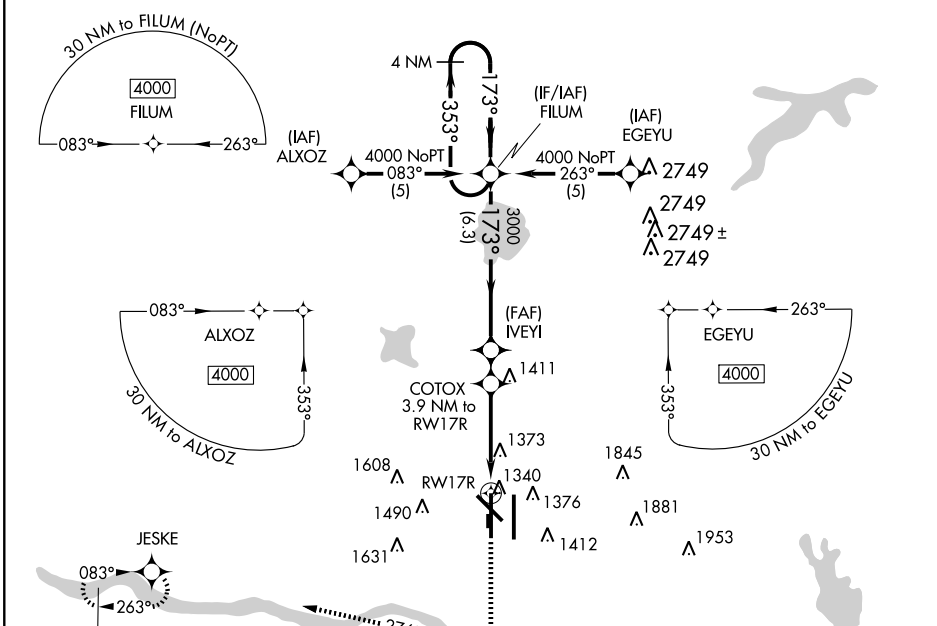
WAAS CH 50102 W17A	APP CRS 173°	Rwy Idg TDZE 1282 Apt Elev 1295	9800
----------------------------------------	------------------------	-----------------------------------------------------	-------------

⚠ Circling to Rwy 18-36 NA at night. For inoperative MALSR, increase LNAV/VNAV Cat D visibility to RVR 5000, and LNAV Cat D visibility to RVR 6000. For uncompensated Baro-VNAV systems, LNAV/VNAV NA below -17°C (2°F) or above 46°C (114°F). DME/DME RNP-0.3 NA.



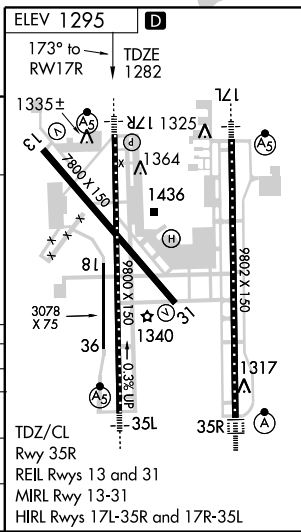
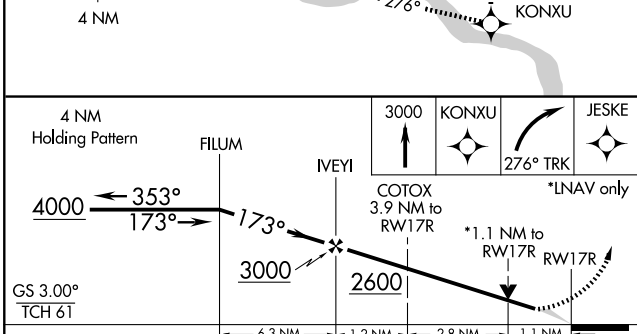
MISSED APPROACH: Climb to 3000 direct KONXU and right turn via 276° track to JESKE and hold.

ATIS 125.85	OKE CITY APP CON 124.6 266.8	ROGERS TOWER 119.35 269.45	GND CON 121.9 348.6	CLNC DEL 124.35
-----------------------	----------------------------------------	--------------------------------------	-------------------------------	---------------------------



SC-1, 22 OCT 2009 to 19 NOV 2009

SC-1, 22 OCT 2009 to 19 NOV 2009



CATEGORY	A	B	C	D
LPV DA	1540/24		258 (300-½)	
LNAV/VNAV DA	1610/24	328 (400-½)		1610/40 328 (400-¾)
LNAV MDA	1680/24	398 (400-½)		1680/50 398 (400-1)
CIRCLING	1740-1 445 (500-1)	1760-1 465 (500-1)	1760-1½ 465 (500-1½)	1860-2 565 (600-2)