

ILS or LOC/DME RWY 35L

OKLAHOMA CITY/ WILL ROGERS WORLD (OKC)

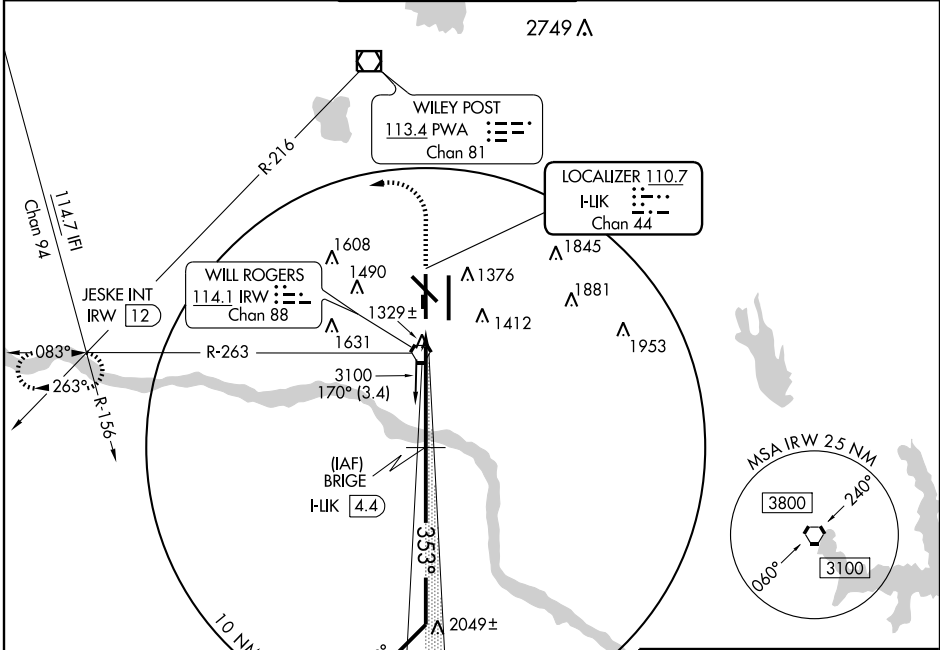
LOC/DME F-HLK	APP CRS	Rwy Idg	9800
110.7	353°	TDZE	1277
Chan 44		Apt Elev	1295

ASR For inoperative MALSR, increase S-ILS 35L Cat E visibility to RVR 4000 and S-LOC Cats D,E visibility to RVR 5000.

MALSR

MISSED APPROACH: Climb to 2000 then climbing left turn to 3000 via heading 260° and PWA VOR/DME R-216 to JESKE Int/IRW 12 DME and hold.

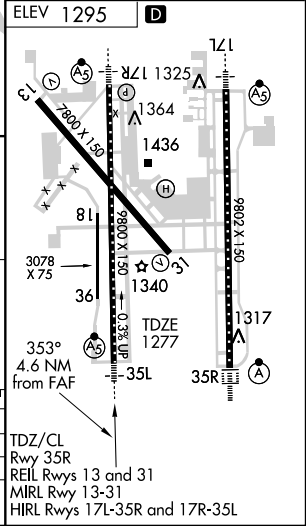
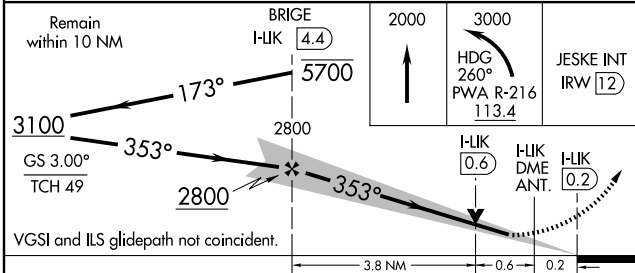
ATIS	OKE CITY APP CON	ROGERS TOWER	GND CON	CLNC DEL
125.85	124.6 266.8	119.35 269.45	121.9 348.6	124.35



SC-1, 22 OCT 2009 to 19 NOV 2009

SC-1, 22 OCT 2009 to 19 NOV 2009

Cat E procedure turn NA, radar required.



CATEGORY	A	B	C	D	E
S-ILS 35L	1477/24		200 (200-1/2)		
S-LOC 35L	1580/24		1580/40 303 (300-3/4)		
CIRCLING	1740-1 445 (500-1)	1760-1 465 (500-1)	1760-1 1/2 465 (500-1 1/2)	1860-2 565 (600-2)	2240-3 945 (1000-3)

TDZ/CL RWY 35R
 REIL Rwy 13 and 31
 MIRL Rwy 13-31
 HIRL Rwy 17L-35R and 17R-35L