

ILS or LOC RWY 17R

OKLAHOMA CITY/WILL ROGERS WORLD (OKC)

LOC/DME I-OKC	APP CRS	Rwy Idg	9800
110.7	173°	TDZE	1282
Chan 44		Apt Elev	1295

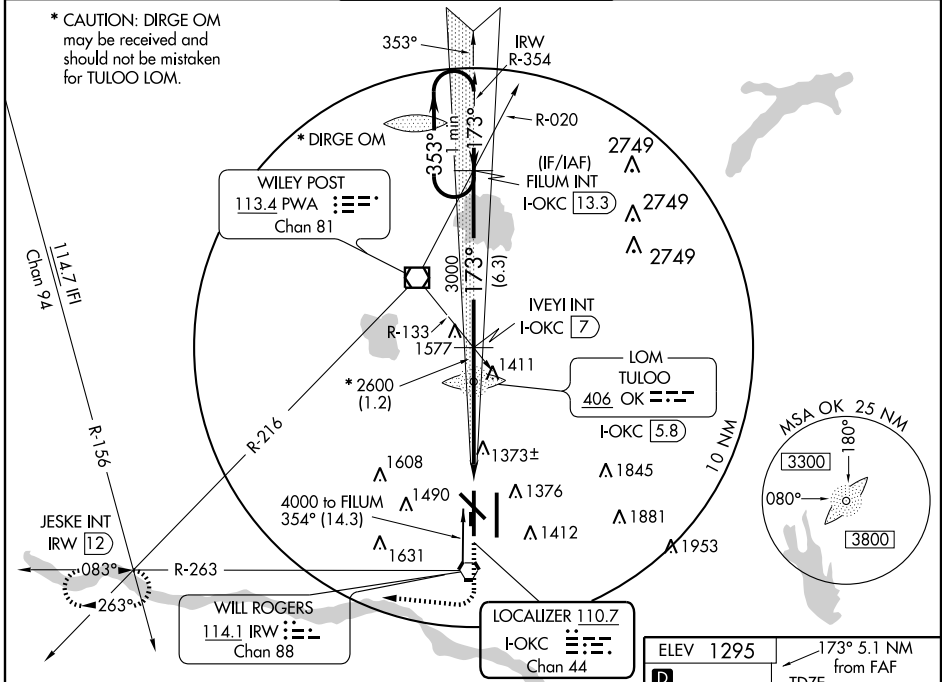
ASR Circling NA at night to Rwy 18-36.
**** Use of flight director or autopilot or HGS required.**



MISSED APPROACH: Climb to 2000 then climbing right turn to 3000 via IRW R-263 to JESKE Int/12 DME and hold.

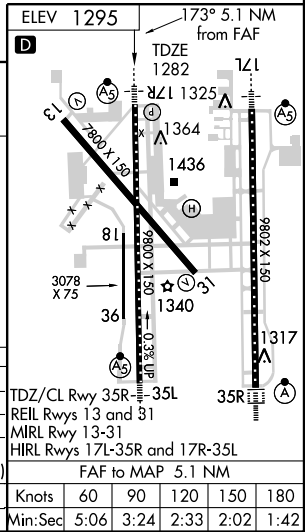
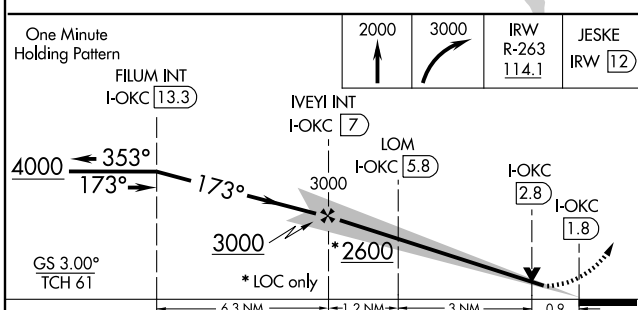
ATIS	OKE CITY APP CON	ROGERS TOWER	GND CON	CLNC DEL
125.85	124.6 266.8	119.35 269.45	121.9 348.6	124.35

*** CAUTION:** DIRGE OM may be received and should not be mistaken for TULLO LOM.



SC-1, 22 OCT 2009 to 19 NOV 2009

SC-1, 22 OCT 2009 to 19 NOV 2009



CATEGORY	A	B	C	D	E
S-ILS 17R		1482/24	200 (200-1/2)		
S-LOC 17R		1640/24	358 (400-1/2)	1640/40	358 (400-3/4)
CIRCLING	1760-1	465 (500-1)	1760-1/2	1860-2	2200-3
		465 (500-1/2)	465 (500-1/2)	565 (600-2)	905 (1000-3)
SPECIAL AIRCREW AND AIRCRAFT CERTIFICATION REQUIRED					
S-ILS 17R**		1482/18	200 (200-1/2)		

Knots	60	90	120	150	180
Min:Sec	5:06	3:24	2:33	2:02	1:42