

# ILS RWY 35R

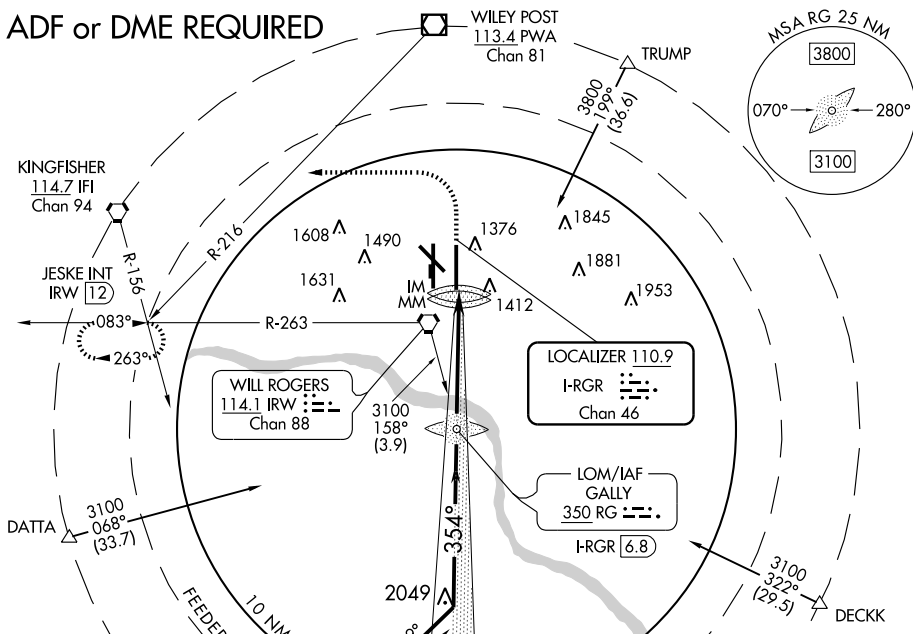
OKLAHOMA CITY/WILL ROGERS WORLD (OKC)

LOC I-RGR <b>110.9</b> Chan 46	APP CRS <b>354°</b>	Rwy Idg TDZE Apt Elev	<b>9802</b> <b>1294</b> <b>1295</b>
--------------------------------------	------------------------	-----------------------------	---

<p><b>ASR</b> Cat D and E S-LOC visibility increased to RVR 5000 for inoperative ALSF.</p> <p>Cat. E procedure turn not authorized.</p>	<p>ALSF-2</p>	<p>MISSED APPROACH: Climb to 2000 then climbing left turn to 3000 via heading 260° and PWA R-216 to JESKE Int and hold.</p>
---	---------------	---

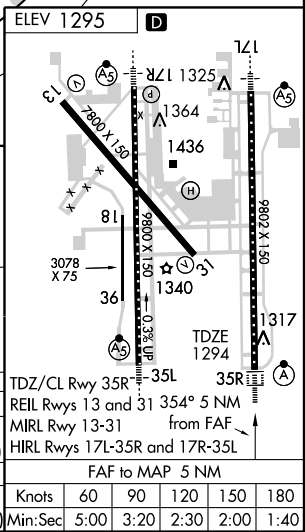
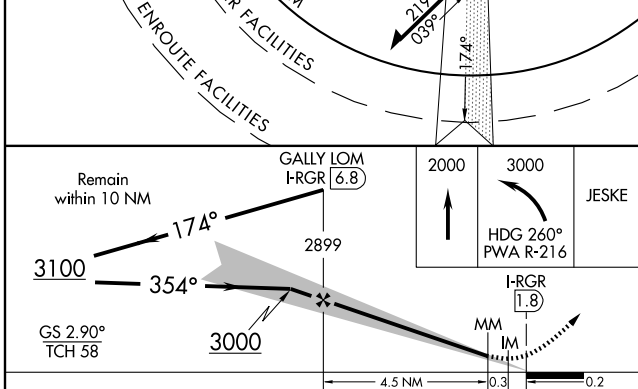
ATIS <b>125.85</b>	OKE CITY APP CON <b>124.6 266.8</b>	ROGERS TOWER <b>119.35 269.45</b>	GND CON <b>121.9 348.6</b>	CLNC DEL <b>124.35</b>
-----------------------	--	--------------------------------------	-------------------------------	---------------------------

## ADF or DME REQUIRED



SC-1, 22 OCT 2009 to 19 NOV 2009

SC-1, 22 OCT 2009 to 19 NOV 2009



CATEGORY	A	B	C	D	E													
S-ILS 35R		1494/18	200 (200-½)			1494/24 200 (200-½)												
S-LOC 35R		1620/24	326 (400-½)		1620/40	326 (400-¾)												
CIRCLING	1760-1	465 (500-1)	1760-1½ 465 (500-1½)	1860-2 565 (600-2)	2240-3 945 (1000-3)													
						<table border="1"> <tr> <td>Knots</td> <td>60</td> <td>90</td> <td>120</td> <td>150</td> <td>180</td> </tr> <tr> <td>Min:Sec</td> <td>5:00</td> <td>3:20</td> <td>2:30</td> <td>2:00</td> <td>1:40</td> </tr> </table>	Knots	60	90	120	150	180	Min:Sec	5:00	3:20	2:30	2:00	1:40
Knots	60	90	120	150	180													
Min:Sec	5:00	3:20	2:30	2:00	1:40													