

OKLAHOMA CITY, OKLAHOMA

VOR/DME-A or TACAN-A

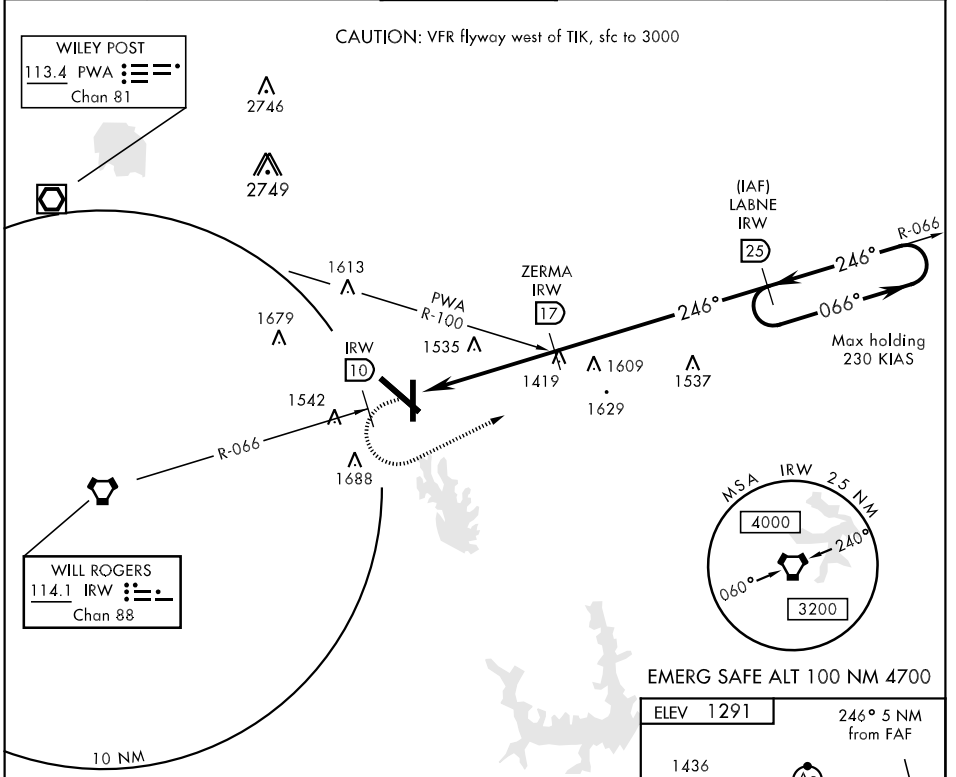
VORTAC IRW 114.1 Chan 88	APCH CRS 246°	Rwy Idg TDZE Arpt Elev N/A N/A 1291
--	-------------------------	--

AL-299 [USAF]

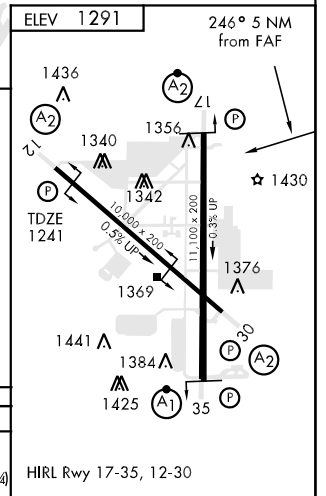
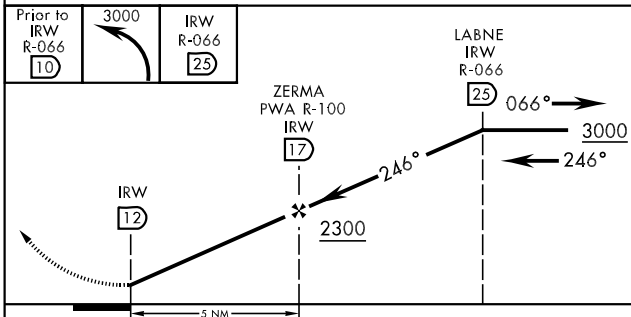
TINKER AFB (KTIK)

▼ * CAT E Circling not authorized in sector S of Rwy 12-30 and W of Rwy 17-35. MISSED APPROACH: Climbing left turn to 3000, commence turn prior to IRW R-066/10 DME, then direct to IRW R-066/25 DME and hold.

ATIS ★ 270.1	OKC CITY APP CON 120.45 288.325	TINKER TOWER 124.45 251.05	GND CON 121.8 275.8	CLNC DEL 119.7 335.8	ASR
------------------------	---	--------------------------------------	-------------------------------	--------------------------------	-----



EMERG SAFE ALT 100 NM 4700



CATEGORY	A	B	C	D	E
CIRCLING *	1920-1	629 (700-1)	1920-1¾ 629 (700-1¾)	1980-2¼ 689 (700-2¼)	2040-2¾ 749 (800-2¾)

OKLAHOMA CITY, OKLAHOMA
Orig 09211

35°25'N-97°23'W

TINKER AFB (KTIK)

VOR/DME-A or TACAN-A

SC-1, 22 OCT 2009 to 19 NOV 2009

SC-1, 22 OCT 2009 to 19 NOV 2009