

VOR/DME PWA 113.4 Chan 81	APCH CRS 292°	Rwy Idg TDZE 1276 Arpt Elev 1291
--	-------------------------	--

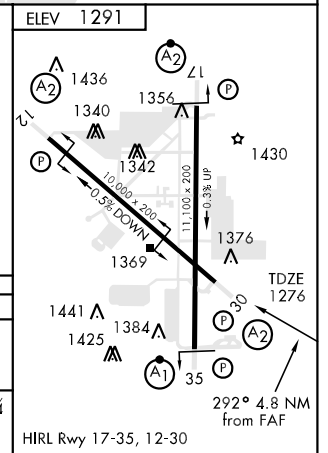
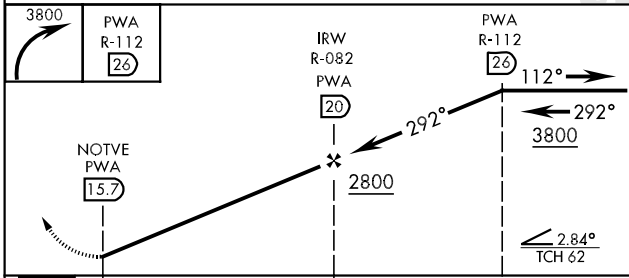
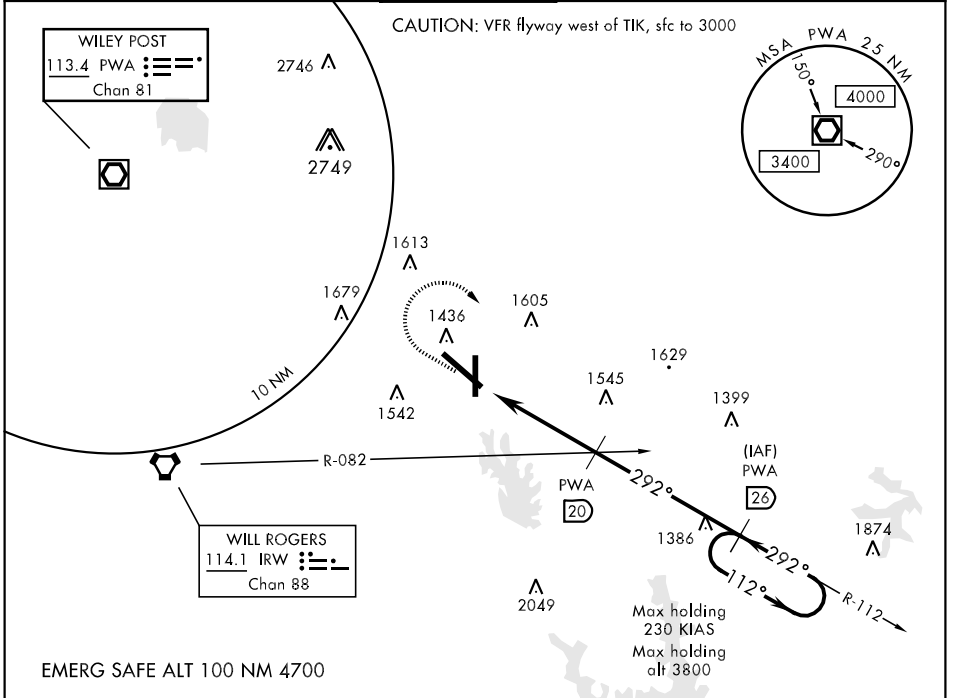
AL-299 [USAF]

TINKER AFB (KTIK)

▼ * When ALS inop, increase CAT AB RVR to 50 and vis to 1 mile, CAT C vis to 1½ miles, CAT D vis to 1¾ miles, CAT E vis to 2 miles.
** CAT E Circling not authorized in sector S of Rwy 12-30 and W of Rwy 17-35.

SALS
(A2)
MISSED APPROACH: Climbing right turn to 3800, then direct to the PWA R-112/26 DME and hold.

ATIS ★ 270.1	OKC CITY APP CON 120.45 288.325	TINKER TOWER 124.45 251.05	GND CON 121.8 275.8	CLNC DEL 119.7 335.8	ASR
------------------------	---	--------------------------------------	-------------------------------	--------------------------------	-----



CATEGORY	A	B	C	D	E
S-30 *	1840/50	564 (600-1)	1840/60 564 (600-1¼)	1840-1½ 564 (600-1½)	1840-1¾ 564 (600-1¾)
CIRCLING **	1880-1	589 (600-1)	1880-1½ 589 (600-1½)	1980-2¼ 689 (700-2¼)	2040-2¾ 749 (800-2¾)

SC-1, 22 OCT 2009 to 19 NOV 2009

SC-1, 22 OCT 2009 to 19 NOV 2009