

VOR/DME PWA
113.4
 Chan **81**

APCH CRS
110°

Rwy ldg **10,000**
 TDZE **1241**
 Arpt Elev **1291**

AL-299 [USAF]

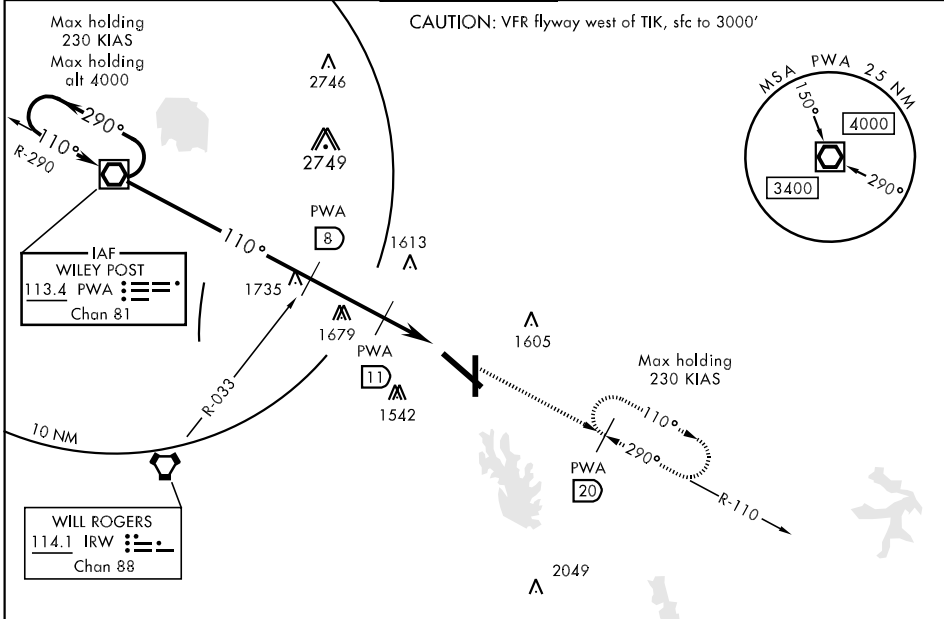
TINKER AFB (KTIK)

▼ * When ALS inop, increase CAT AB RVR to 50 and vis to 1 mile, CAT C vis to 1 1/4 miles, CAT D vis to 2 miles, CAT E vis to 2 1/4 miles.
 ** CAT E Circling not authorized in sector S of Rwy 12-30 and W of Rwy 17-35.

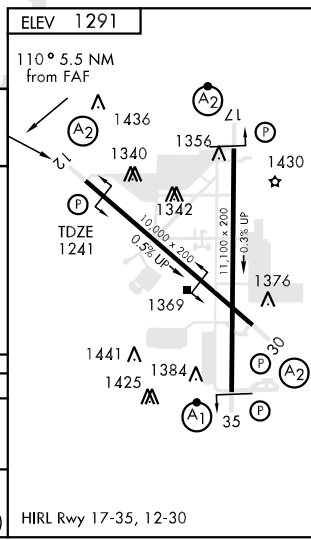
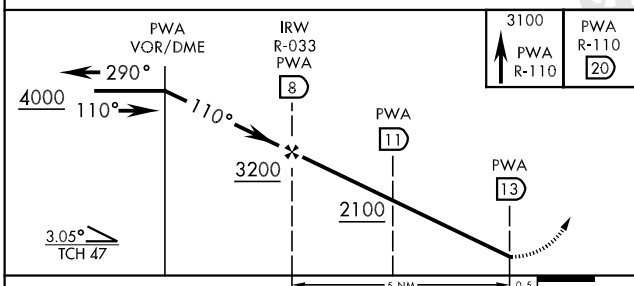
SALS
 (A2)

MISSED APPROACH: Climb to 3100 direct to PWA R-110/20 DME and hold.

ATIS ★ 270.1	OKE CITY APP CON 120.45 288.325	TINKER TOWER 124.45 251.05	GND CON 121.8 275.8	CLNC DEL 119.7 335.8	ASR
------------------------	-------------------------------------------	--------------------------------------	-------------------------------	--------------------------------	-----



EMERG SAFE ALT 100 NM 4700



CATEGORY	A	B	C	D	E
S-12 *	1900/40 659 (700-34)		1900-1 1/2 659 (700-1 1/2)	1900-1 3/4 659 (700-1 3/4)	1900-2 659 (700-2)
CIRCLING **	1900-1 609 (700-1)		1900-1 3/4 609 (700-1 3/4)	1980-2 1/4 689 (700-2 1/4)	2040-2 3/4 749 (800-2 3/4)

HIRL Rwy 17-35, 12-30

SC-1, 22 OCT 2009 to 19 NOV 2009

SC-1, 22 OCT 2009 to 19 NOV 2009