

LOC I-PLH 111.7	APCH CRS 306°	Rwy Idg 10,000 TDZE 1276 Arpt Elev 1291
---------------------------	-------------------------	--

AL-299 [USAF]

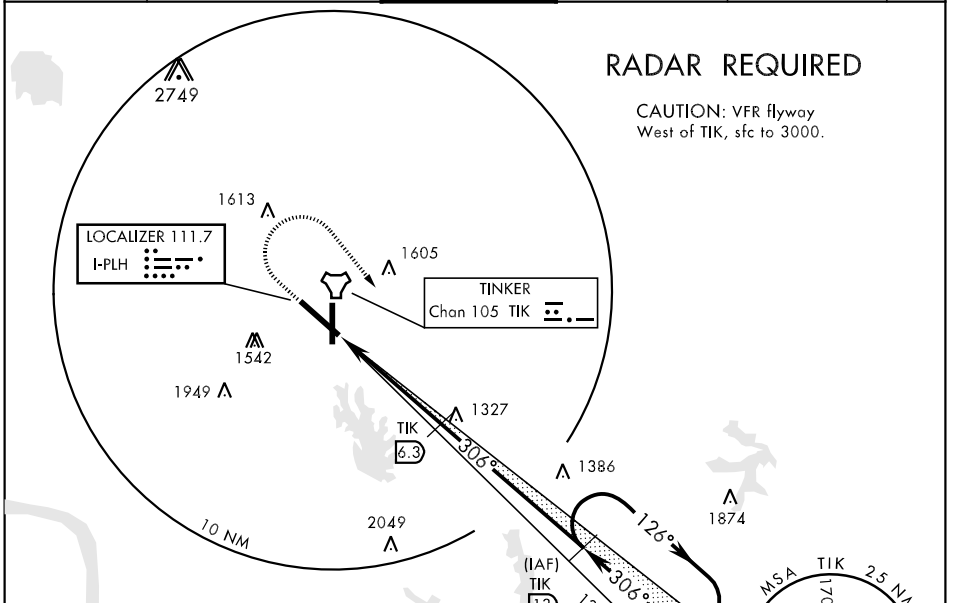
TINKER AFB (KTIK)

▼ * When ALS inop, increase CAT AB RVR to 50 and vis to 1 mile, CAT CD RVR to 60 and vis to 1½ miles, CAT E vis to 1½. ** CAT E Circling not authorized in sector S of Rwy 12-30 and W of Rwy 17-35.	SALS 	MISSED APPROACH: Climb straight ahead to 2500, then turn right to 4000 direct I-PLH and TIK 13 DME and hold.
	ATIS ★ 270.1	OKE CITY APP CON 120.45 288.325

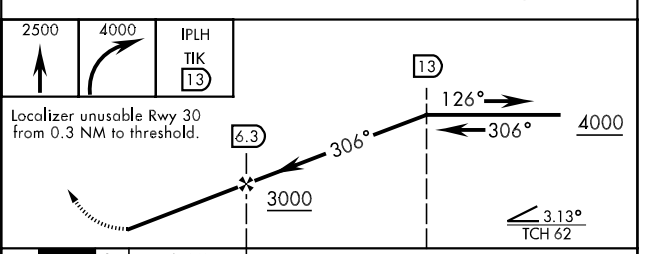
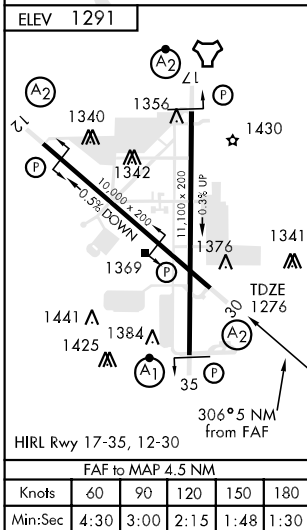
GND CON 121.8 275.8	CLNC DEL 119.7 335.8	ASR
-------------------------------	--------------------------------	-----

RADAR REQUIRED

CAUTION: VFR flyway West of TIK, sfc to 3000.



EMERG SAFE ALT 100 NM 4700



CATEGORY	A	B	C	D	E
S-LOC 30 *	1700/40 424 (500-¾)	1700/50 424 (500-1)	1880-1½ 589 (600-1½)	1980-2¼ 689 (700-2¼)	2040-2¾ 749 (800-2¾)
CIRCLING **	1880-1 589 (600-1)	1880-1½ 589 (600-1½)	1980-2¼ 689 (700-2¼)	2040-2¾ 749 (800-2¾)	2040-2¾ 749 (800-2¾)