

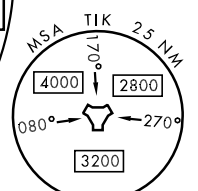
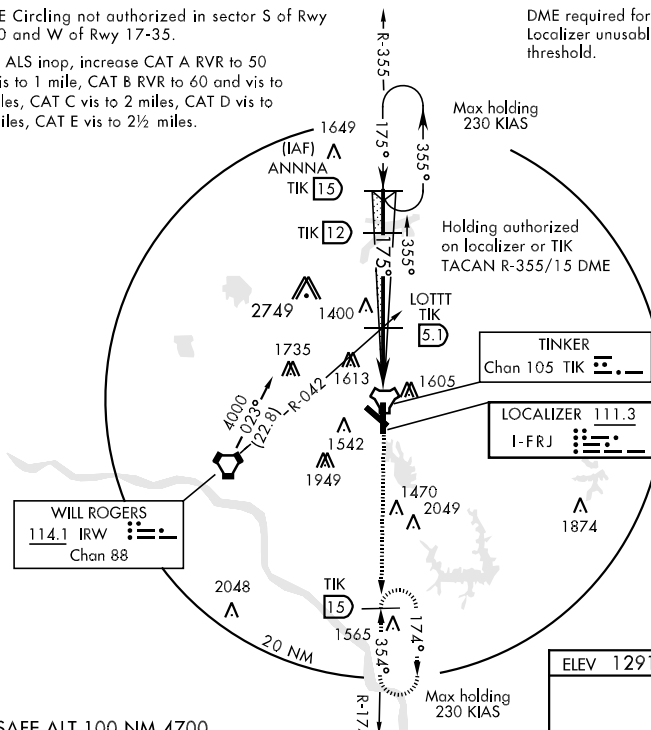
LOC I-FRJ <b>111.3</b>	APCH CRS <b>175°</b>	Rwy Idg <b>11,100</b> TDZE <b>1267</b> Arpt Elev <b>1291</b>	AL-299 [USAF]	TINKER AFB (KTIK)
---------------------------	-------------------------	--------------------------------------------------------------------	---------------	-------------------

**▽** \* When ALS inop, increase CAT AB RVR to 40 and vis to ¾ mile.  
**\*\*** When ALS inop, increase CAT AB RVR to 50 and vis to 1 mile, CAT C RVR to 60 and vis to 1¼ miles, CAT DE vis to 1½ miles.

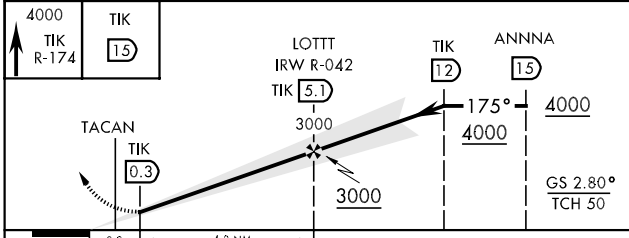
ATIS ★ <b>270.1</b>	OKE CITY APP CON <b>124.2 336.4</b>	TINKER TOWER <b>124.45 251.05</b>	GND CON <b>121.8 275.8</b>	CLNC DEL <b>119.7 335.8</b>	ASR
------------------------	----------------------------------------	--------------------------------------	-------------------------------	--------------------------------	-----

**\*\*\*** CAT E Circling not authorized in sector S of Rwy 12-30 and W of Rwy 17-35.  
**†** When ALS inop, increase CAT A RVR to 50 and vis to 1 mile, CAT B RVR to 60 and vis to 1¼ miles, CAT C vis to 2 miles, CAT D vis to 2½ miles, CAT E vis to 2½ miles.

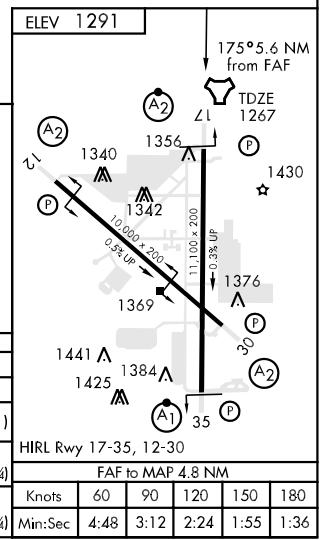
DME required for localizer only approach. Localizer unusable from TIK 0.1 DME to rwy threshold.



EMERG SAFE ALT 100 NM 4700



CATEGORY	A	B	C	D	E
S-ILS 17 *	1467/24	200 (200-½)	1467/40	200	(200-¾)
S-LOC 17 **	1720/40	453 (500-¾)	1720/50 453 (500-1)	1720/60	453 (500-1¼)
CIRCLING ***	1880-1	589 (600-1)	1880-1½ 589 (600-1½)	1980-2¼ 689 (700-2¼)	2040-2¾ 749 (800-2¾)
S-ASR 17 †	2000/40 733 (800-¾)	2000/50 733 (800-1)	2000-1¾ 733 (800-1¾)	2000-2 733 (800-2)	2000-2½ 733 (800-2½)



HIRL Rwy 17-35, 12-30					
FAF to MAP 4.8 NM					
Knots	60	90	120	150	180
Min:Sec	4:48	3:12	2:24	1:55	1:36

SC-1, 22 OCT 2009 to 19 NOV 2009

SC-1, 22 OCT 2009 to 19 NOV 2009