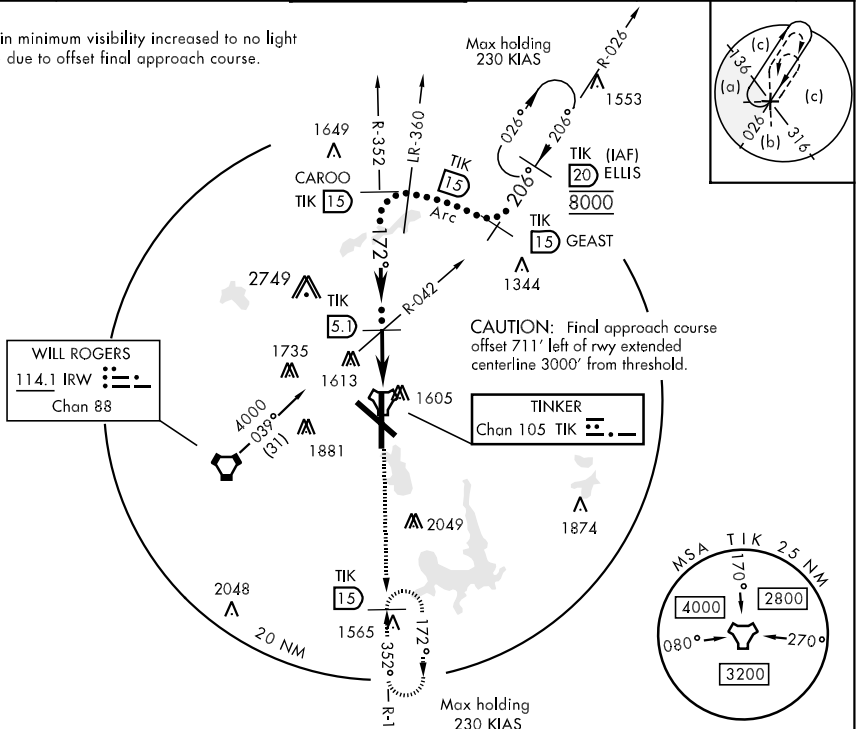


TACAN TIK Chan 105	APCH CRS 172°	Rwy Idg 11,100 TDZE 1267 Arprt Elev 1291	AL-299 [USAF]	TINKER AFB (KTIK)
-----------------------	------------------	--	---------------	-------------------

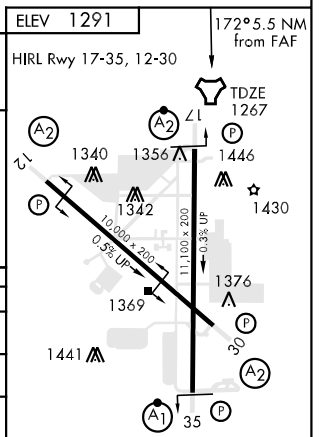
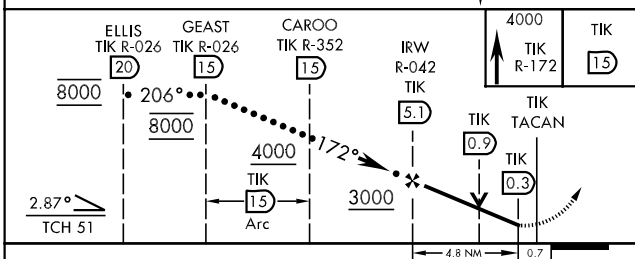
A2 * CAT E Circling not authorized in sector S of Rwy 12-30 and W of Rwy 17-35. When VGSI inop, circling to Rwy 30 at night NA.
 ** When ALS inop, increase CAT CDE vis by ¼ mile.

ATIS ★ 270.1	OKE CITY APP CON 124.2 336.4	TINKER TOWER 124.45 251.05	GND CON 121.8 275.8	CLNC DEL 119.7 335.8	ASR
-----------------	---------------------------------	-------------------------------	------------------------	-------------------------	-----

Straight-in minimum visibility increased to no light minimum due to offset final approach course.



EMERG SAFE ALT 100 NM 4700



CATEGORY	C	D	E
S-17	1720/60 453 (500-1¼)	1720-1½	453 (500-1½)
CIRCLING *	1880-1½ 589 (600-1½)	1980-2¼ 689 (700-2¼)	2040-2¾ 749 (800-2¾)
S-ASR 17 **	2000-1¾ 733 (800-1¾)	2000-2 733 (800-2)	2000-2¼ 733 (800-2¼)

SC-1, 22 OCT 2009 to 19 NOV 2009

SC-1, 22 OCT 2009 to 19 NOV 2009