

LOC I-TIK <b>109.5</b>	APCH CRS <b>355°</b>	Rwy Idg <b>11,100</b> TDZE <b>1291</b> Arpt Elev <b>1291</b>
---------------------------	-------------------------	--

AL-299 [USAF]

TINKER AFB (KTIK)

▼ \* When ALS inop, increase CAT CDE RVR to 40 and vis to ¾ mile.  
 \*\* When ALS inop, increase CAT C RVR to 50 and vis to 1 mile, CAT DE RVR to 60 and vis to 1 ¼ miles.

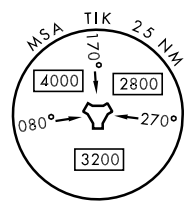
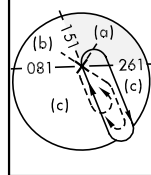
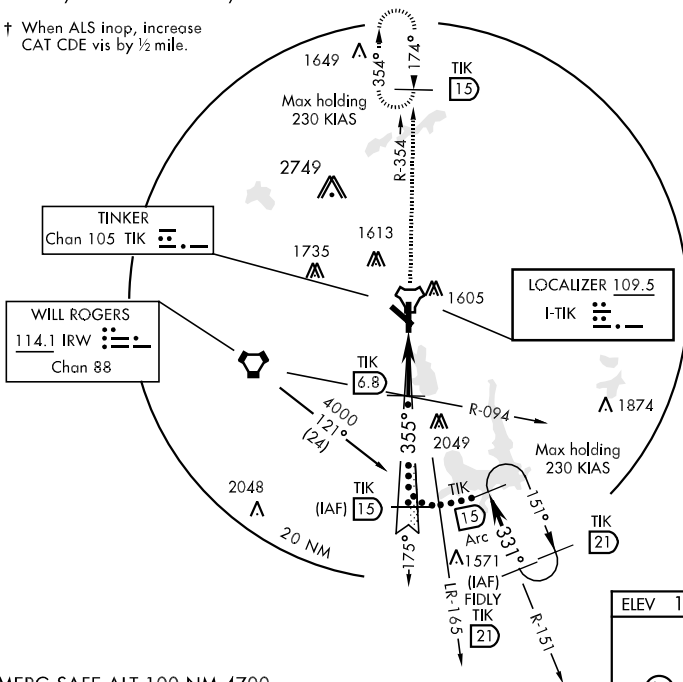
**ALSF-1**

**MISSED APPROACH:** Climb to 4000 on the TIK TACAN R-354 to 15 DME and hold.

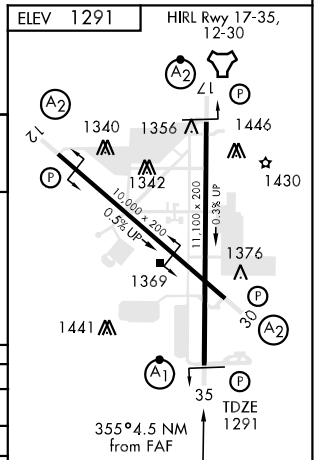
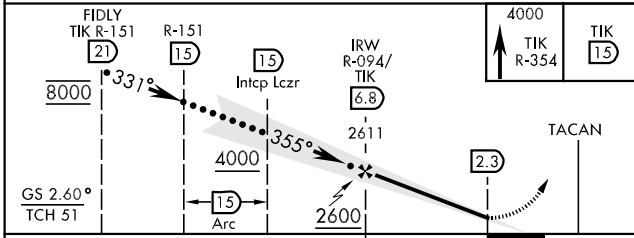
ATIS * <b>270.1</b>	OKC CITY APP CON <b>120.45 288.325</b>	TINKER TOWER <b>124.45 251.05</b>	GND CON <b>121.8 275.8</b>	CLNC DEL <b>119.7 335.8</b>	ASR
------------------------	---	--------------------------------------	-------------------------------	--------------------------------	-----

\*\*\* CAT E Circling not authorized in sector S of Rwy 12-30 and W of Rwy 17-35.

† When ALS inop, increase CAT CDE vis by ½ mile.



EMERG SAFE ALT 100 NM 4700



CATEGORY	C	D	E
S-ILS 35 *	1491/24	200	(200-½)
S-LOC 35 **	1640/40	349	(400-¾)
CIRCLING ***	1880-1½ 589 (600-1½)	1980-2¼ 689 (700-2¼)	2040-2¾ 749 (800-2¾)
	1940/60 649 (700-1¼)	1940-1½ 649 (700-1½)	1940-1¾ 649 (700-1¾)
S-ASR 35 †			

FAF to MAP 4.5 NM					
Knots	120	140	160	180	200
Min:Sec	2:15	1:56	1:41	1:30	1:21

SC-1, 22 OCT 2009 to 19 NOV 2009

SC-1, 22 OCT 2009 to 19 NOV 2009