

# RNAV (GPS) RWY 17R

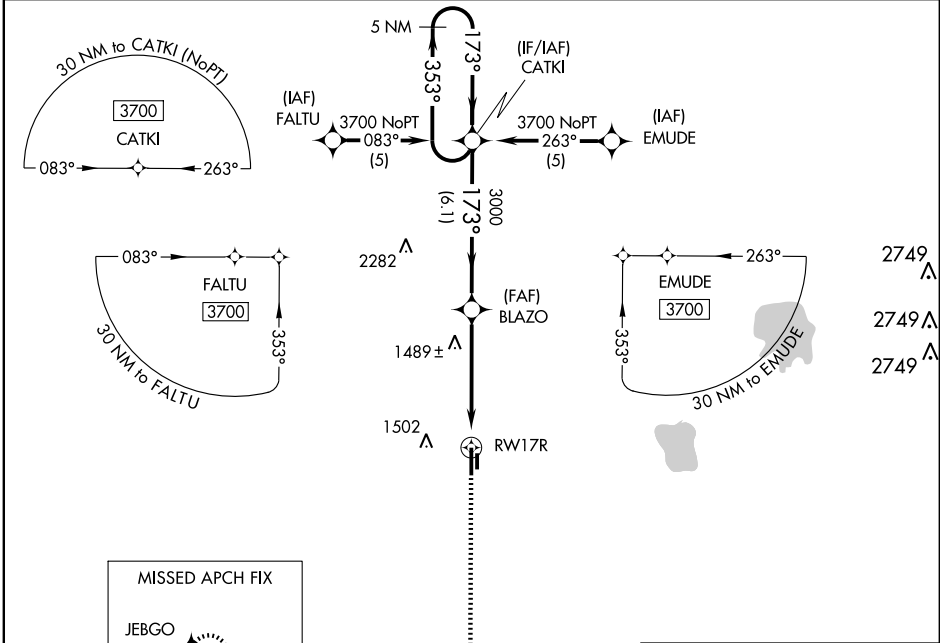
OKLAHOMA CITY/CLARENCE E. PAGE MUNI (R'CE)

WAAS CH <b>42701</b> <b>W17A</b>	APP CRS <b>173°</b>	Rwy Idg <b>6014</b> TDZE <b>1351</b> Apt Elev <b>1354</b>
--	------------------------	---

**▼** DME/DME RNP-0.3 NA. Use Wiley Post altimeter setting; if not received use Will Rogers World altimeter setting, and increase all DA/MDA 20 feet.  
**▲** NA

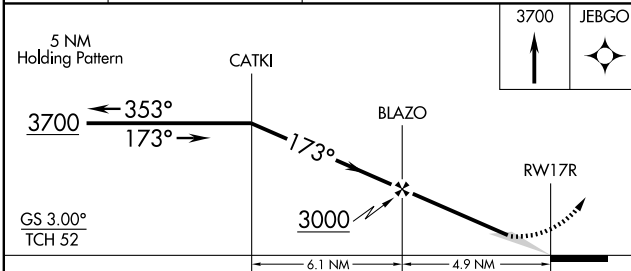
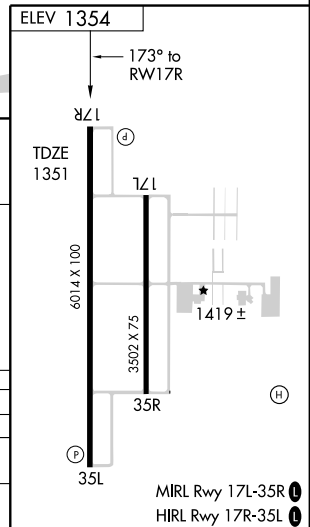
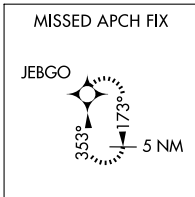
**MISSED APPROACH:** Climb to 3700 direct JEBGO and hold.

AWOS-3 <b>125.05</b>	OKE CITY APP CON <b>124.6 266.8</b>	UNICOM <b>123.0 (CTAF)</b>
-------------------------	--	-------------------------------



SC-1, 22 OCT 2009 to 19 NOV 2009

SC-1, 22 OCT 2009 to 19 NOV 2009



CATEGORY	A	B	C	D
LPV DA	1630-1	279 (300-1)		NA
LNAV MDA	1780-1	429 (500-1)	1780-1¼ 429 (500-1¼)	NA
CIRCLING	1840-1	486 (500-1)	1840-1½ 486 (500-1½)	NA

# RNAV (GPS) RWY 17R