

VOR/DME RWY 7

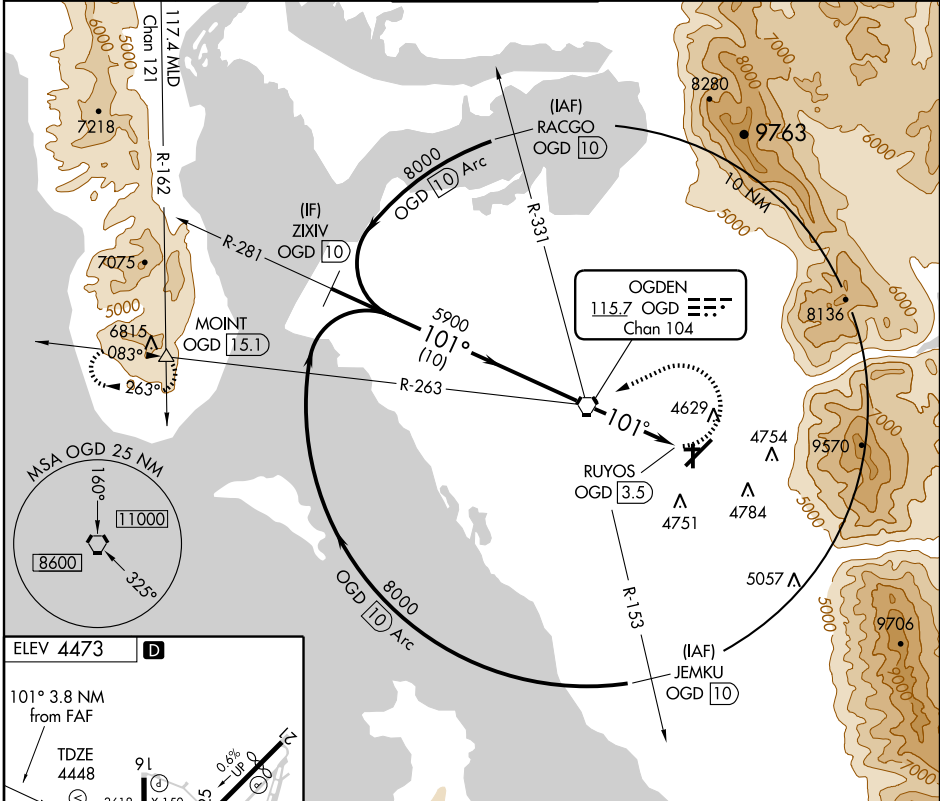
OGDEN-HINCKLEY (OGD)

VORTAC OGD 115.7 Chan 104	APP CRS 101°	Rwy Idg 3618 TDZE 4448 Aprt Elev 4473
---	------------------------	--

When local altimeter setting not received, use Hill AFB altimeter setting.
When VGSI inoperative, straight-in/circling Rwy 7 procedure NA at night.
When VGSI inoperative, circling Rwy 16 NA at night.
Visibility reduction by helicopters NA.

MISSED APPROACH: Climbing left turn to 9000 direct OGD VORTAC and via OGD VORTAC R-263 to MOINT/15.1 DME and hold, continue climb-in-hold to 9000.

ATIS 125.55	SALT LAKE CITY APP CON 121.1 319.25	OGDEN TOWER* 118.7 (CTAF) 253.5	GND CON 121.7	UNICOM 122.95
-----------------------	---	---	-------------------------	-------------------------



SW-4, 22 OCT 2009 to 19 NOV 2009

SW-4, 22 OCT 2009 to 19 NOV 2009

ELEV 4473 **D**

101° 3.8 NM from FAF

TDZE 4448

3618 X 150

5195 X 150

8103 X 150

4489 ±

4600 ±

4546 ±

TWR 4546

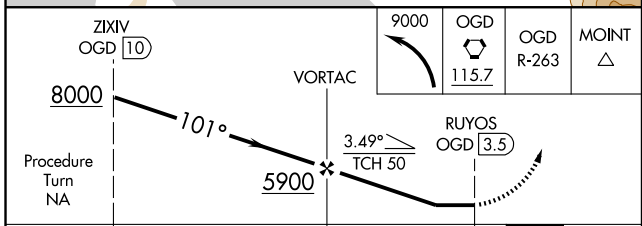
34 A 4497

A 4570

HIRL Rwy 3-21

MIRL Rwy 16-34

REIL Rwy 16 and 34



CATEGORY	A	B	C	D
S-7	4900-1	452 (500-1)	4900-1¼ 452 (500-1¼)	4900-1½ 452 (500-1½)
CIRCLING	4980-1 507 (600-1)	5060-1 587 (600-1)	5060-1½ 587 (600-1½)	5100-2 627 (700-2)