



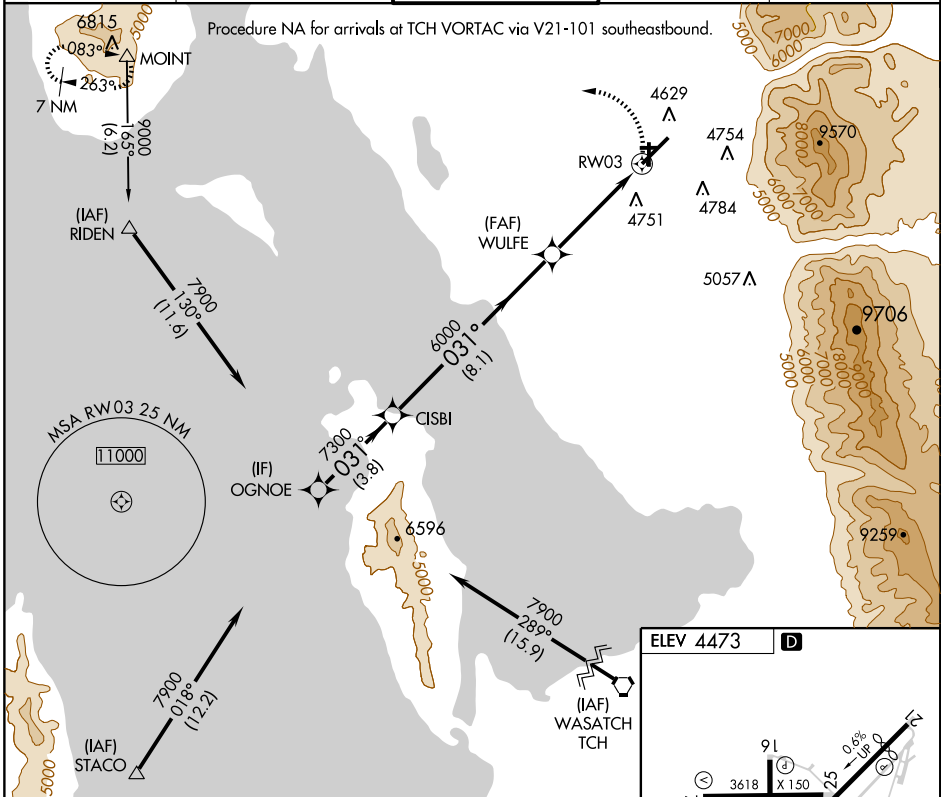
RNAV (GPS) Y RWY 3

OGDEN-HINCKLEY (OGD)

APP CRS 031°	Rwy Idg 7252
	TDZE 4473
	Apt Elev 4473

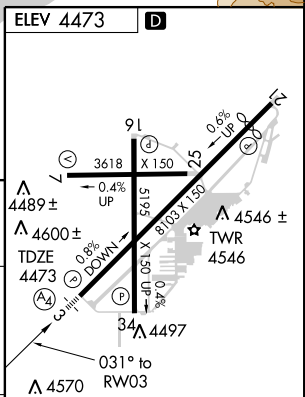
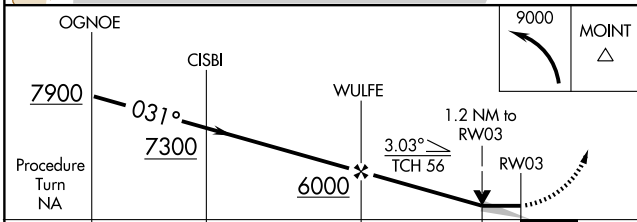
<p>▽ DME/DME RNP-0.3 NA. △ When local altimeter setting not received, use Hill AFB altimeter setting. When VGSI inoperative, circling Rwy 7 and 16 NA at night. Inoperative table does not apply to LNAV Cat C.</p>	<p>MALS  </p>	<p>MISSED APPROACH: Climbing left turn to 9000 direct MOINT and hold, continue climb-in-hold to 9000.</p>

ATIS 125.55	SALT LAKE CITY APP CON 121.1 319.25	OGDEN TOWER* 118.7 (CTAF) 0 253.5	GND CON 121.7	UNICOM 122.95
-----------------------	---	---	-------------------------	-------------------------



SW-4, 22 OCT 2009 to 19 NOV 2009

SW-4, 22 OCT 2009 to 19 NOV 2009



CATEGORY	A	B	C	D
LNAV MDA	4920-¾ 447 (500-¾)	447 (500-¾)	4920-1½ 447 (500-1½)	4920-1½ 447 (500-1½)
CIRCLING	4980-1 507 (600-1)	5060-1 587 (600-1)	5060-1½ 587 (600-1½)	5100-2 627 (700-2)

HIRL Rwy 3-21 ●
MIRL Rwy 16-34 ●
REIL Rlys 16 and 34