

OGDEN, UTAH

TACAN RWY 14

TACAN HIF Chan 49	APCH CRS 131°	Rwy Ldg 13,508 TDZE 4786 Arpt Elev 4789
----------------------	------------------	---

AL-296 [USAF]

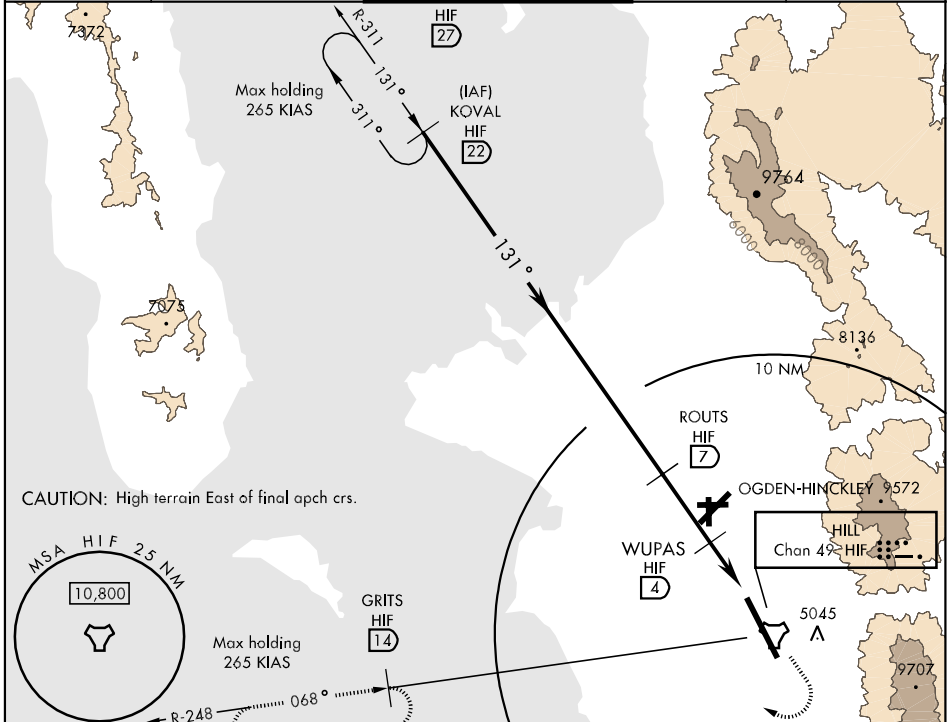
HILL AFB (KHIF)

* When ALS inop, increase CAT ABC RVR to 50 and vis to 1 mile, CAT DE RVR to 60 and vis to 1½ miles.
 ** Circling not authorized in sector NE of Rwy 14-32.

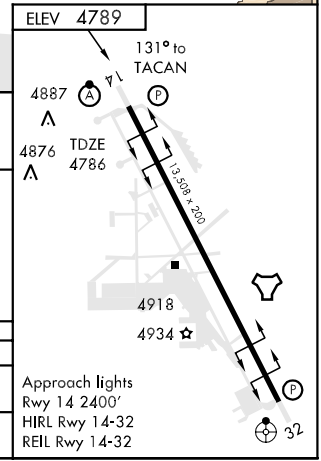
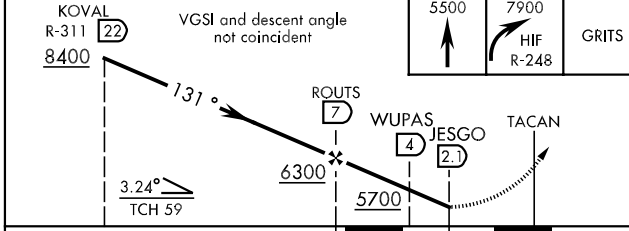
 ALSF-2

 MISSED APPROACH: To 5500, then climbing right turn to 7900 out HIF R-248 to GRITS and hold.

ATIS 134.925 397.9	SALT LAKE CITY APP CON 121.1 319.25	HILL TOWER 127.15 263.15	GND CON 121.6 275.8	CLNC DEL 124.1 335.8
-----------------------	--	-----------------------------	------------------------	-------------------------



EMERG SAFE ALT 100 NM 15,600 FROM "HIF" TACAN



CATEGORY	A	B	C	D	E
S-14 *	5140/24	354 (400-½)	5140/40	354 (400-¾)	
CIRCLING**	5240-1	451 (500-1)	5240-1½ 451(500-1½)	5340-2	551 (600-2)

OGDEN, UTAH
Amdt 2 06327

41°07'N-111°58'W

HILL AFB (KHIF)

TACAN RWY 14

SW-4, 22 OCT 2009 to 19 NOV 2009

SW-4, 22 OCT 2009 to 19 NOV 2009