

OGDEN, UTAH

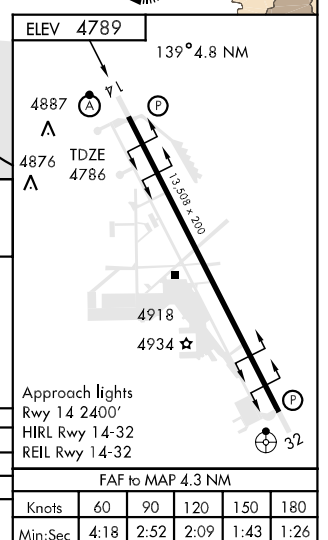
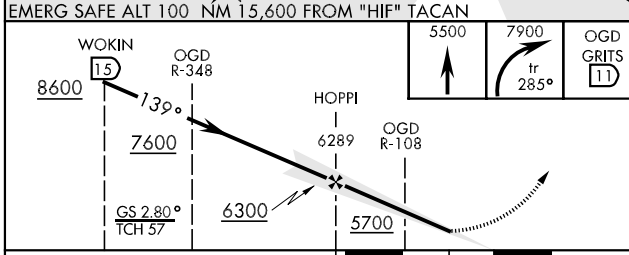
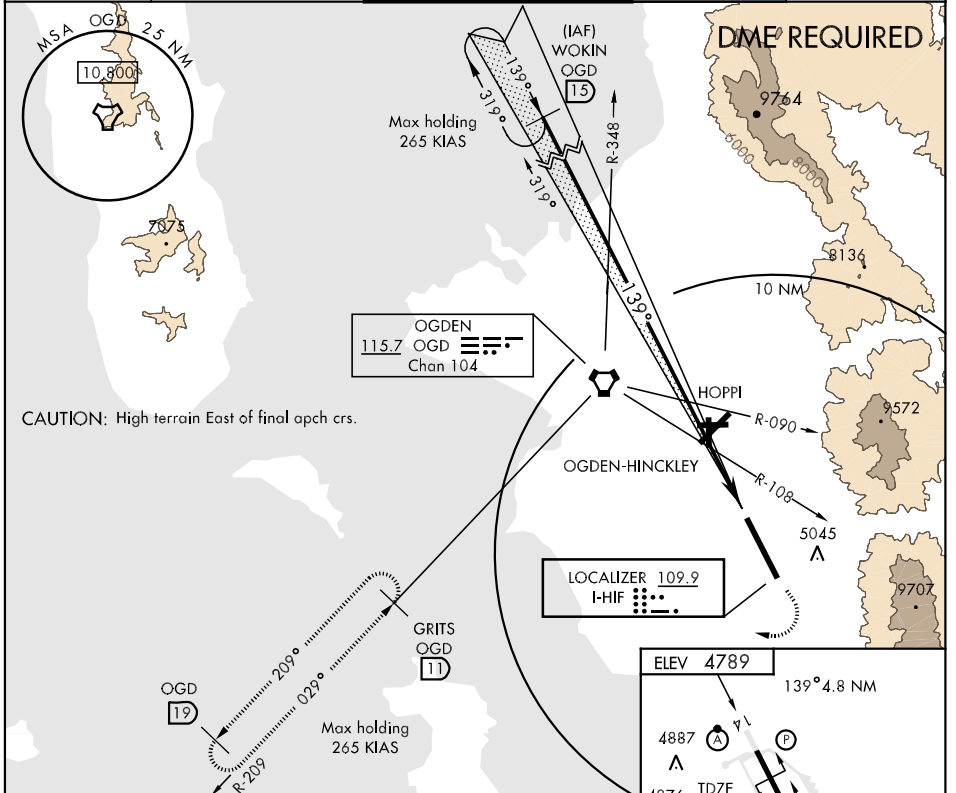
# ILS Z RWY 14

LOC I-HIF <b>109.9</b>	APCH CRS <b>139°</b>	Rwy Idg <b>13,508</b> TDZE <b>4786</b> Arpt Elev <b>4789</b>	AL-296 [USAF]	HILL AFB (KHIF)
---------------------------	-------------------------	--	---------------	-----------------

**▼** \* When ALS inop, increase RVR to 40 and vis to ¾ mile.  
**\*\*** When ALS inop, increase RVR to 50 and vis to 1 mile.  
**\*\*\*** Circling not authorized in sector NE of Rwy 14-32.

**ALSIF-2** MISSED APPROACH: To 5500, then climbing right turn to 7900, track 285° intercept OGD R-209 to GRITS and hold.

ATIS <b>134.925 397.9</b>	SALT LAKE CITY APP CON <b>121.1 319.25</b>	HILL TOWER <b>127.15 263.15</b>	GND CON <b>121.6 275.8</b>	CLNC DEL <b>124.1 335.8</b>
------------------------------	---	------------------------------------	-------------------------------	--------------------------------



CATEGORY	A	B	C	D	E
S-ILS 14 *	4986/24 200 (200-½)				
S-LOC 14 **	5060/24	274 (300-½)	5060/40	274 (300-¾)	
CIRCLING ***	5240-1	451 (500-1)	5240-1½	5340-2	551 (600-2)

FAF to MAP 4.3 NM					
Knots	60	90	120	150	180
Min:Sec	4:18	2:52	2:09	1:43	1:26

OGDEN, UTAH      41° 07'N-111° 58'W      HILL AFB (KHIF)

Amdt 1 08185

# ILS Z RWY 14

SW-4, 22 OCT 2009 to 19 NOV 2009

SW-4, 22 OCT 2009 to 19 NOV 2009