

OGDEN, UTAH

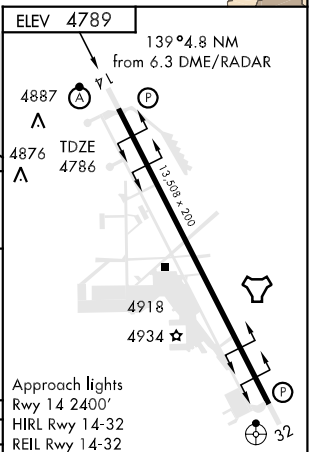
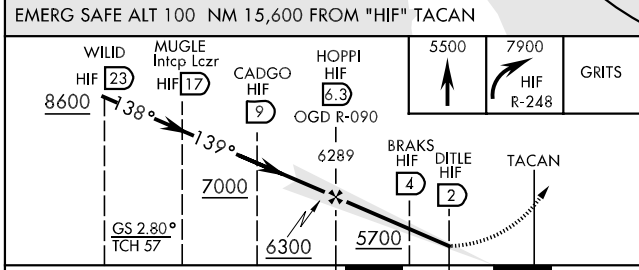
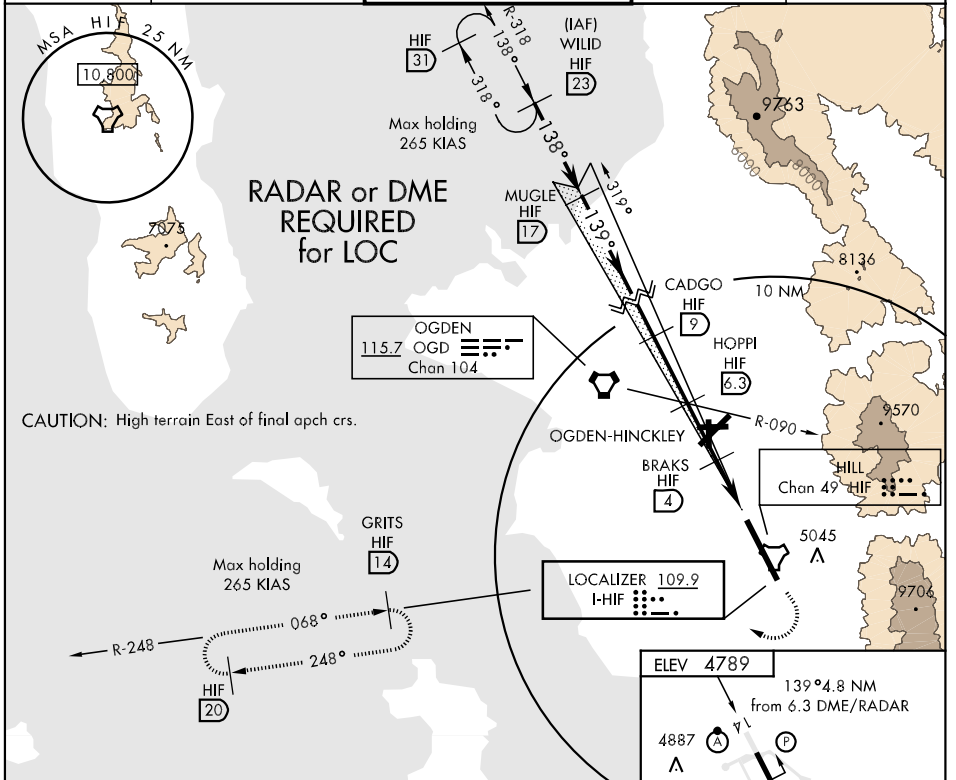
ILS RWY 14

LOC I-HIF 109.9	APCH CRS 139°	Rwy Idg 13,508 TDZE 4786 Arpt Elev 4789	AL-296 [USAF]	HILL AFB (KHIF)
---------------------------	-------------------------	--	---------------	-----------------

▼ ** When ALS inop, increase RVR to 40 and vis to ¾ mile.
 *** When ALS inop, increase RVR to 50 and vis to 1 mile.
 *** Circling not authorized in sector NE of Rwy 14-32.

ALSF-2 MISSED APPROACH: To 5500, then climbing right turn to 7900 out HIF R-248 to GRITS and hold.

ATIS 134.925 397.9	SALT LAKE CITY APP CON 121.1 319.25	HILL TOWER 127.15 263.15	GND CON 121.6 275.8	CLNC DEL 124.1 335.8
------------------------------	---	------------------------------------	-------------------------------	--------------------------------



CATEGORY	A	B	C	D	E
S-ILS 14 *	4986/24 200 (200-½)				
S-LOC 14 **	5040/24	254 (300-½)	5040/40	254 (300-¾)	
CIRCLING ***	5240-1	451 (500-1)	5240-1½ 451(500-1½)	5340-2	551 (600-2)
FAF to MAP 4.3 NM					
Knots	60	90	120	150	180
Min:Sec	4:18	2:52	2:09	1:43	1:26

OGDEN, UTAH
Amdt 2 08241

41°07'N-111°58'W

HILL AFB (KHIF)

ILS RWY 14

SW-4, 22 OCT 2009 to 19 NOV 2009

SW-4, 22 OCT 2009 to 19 NOV 2009