

OGDEN, UTAH

HI-TACAN RWY 32

TACAN HIF Chan 49	APCH CRS 332°	Rwy Idg 13,508 TDZE 4783 Arpt Elev 4789
----------------------	------------------	---

JAL-296 [USAF]

HILL AFB (KHIF)

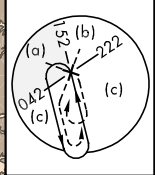
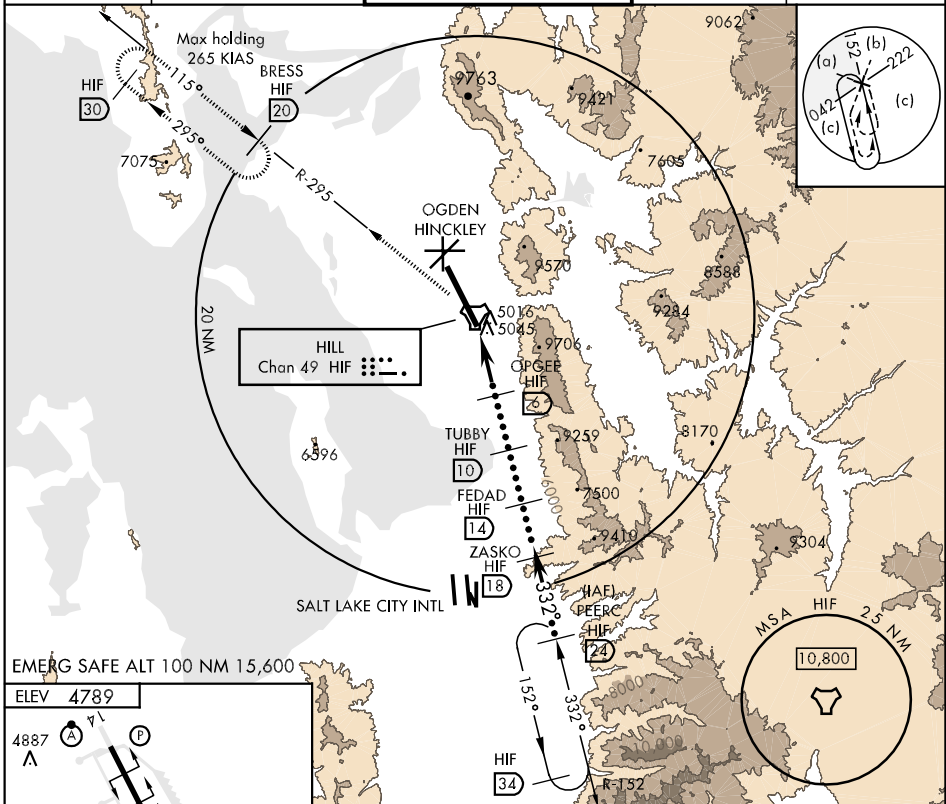
⚠ *Circling not authorized E of Rwy 14-32.
CAUTION: High terrain East of final apch crs.

ODALS

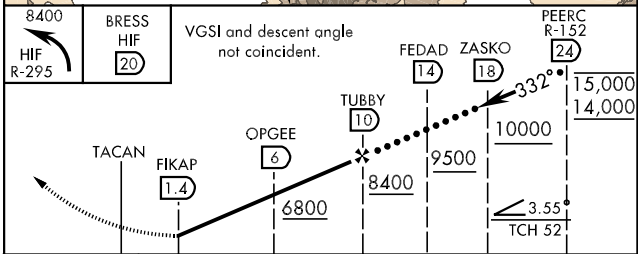
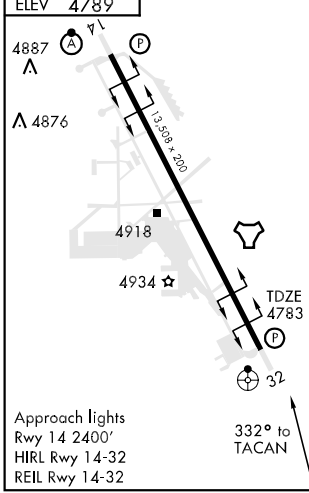


MISSED APPROACH: Climbing left turn to 8400 out HIF R-295 to BRESS and hold.

ATIS 134.925 397.9	SALT LAKE CITY APP CON 121.1 319.25	HILL TOWER 127.15 263.15	GND CON 121.6 275.8	CLNC DEL 124.1 335.8
-----------------------	--	-----------------------------	------------------------	-------------------------



EMERG SAFE ALT 100 NM 15,600



CATEGORY	C	D	E
S-32	5240/50 457 (500-1)	5240/60 457	(500-1¼)
CIRCLING *	5240-1½ 451 (500-1½)	5340-2	551 (600-2)

OGDEN, UTAH
Amdt 2 06271

41°07'N-111°58'W

HILL AFB (KHIF)

HI-TACAN RWY 32

SW-4, 22 OCT 2009 to 19 NOV 2009

SW-4, 22 OCT 2009 to 19 NOV 2009