

OGDEN, UTAH

HI-ILS RWY 14

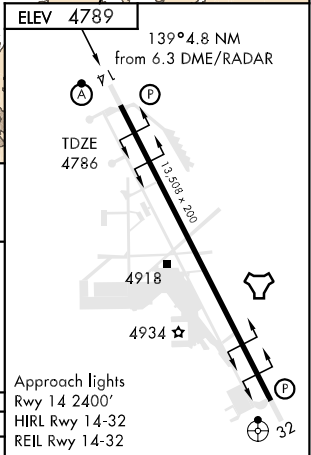
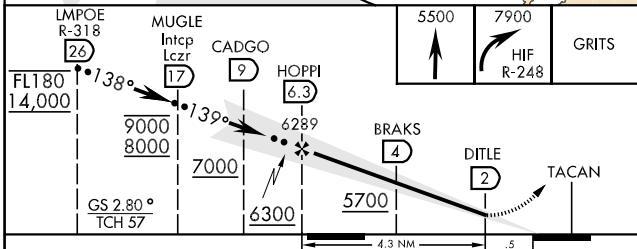
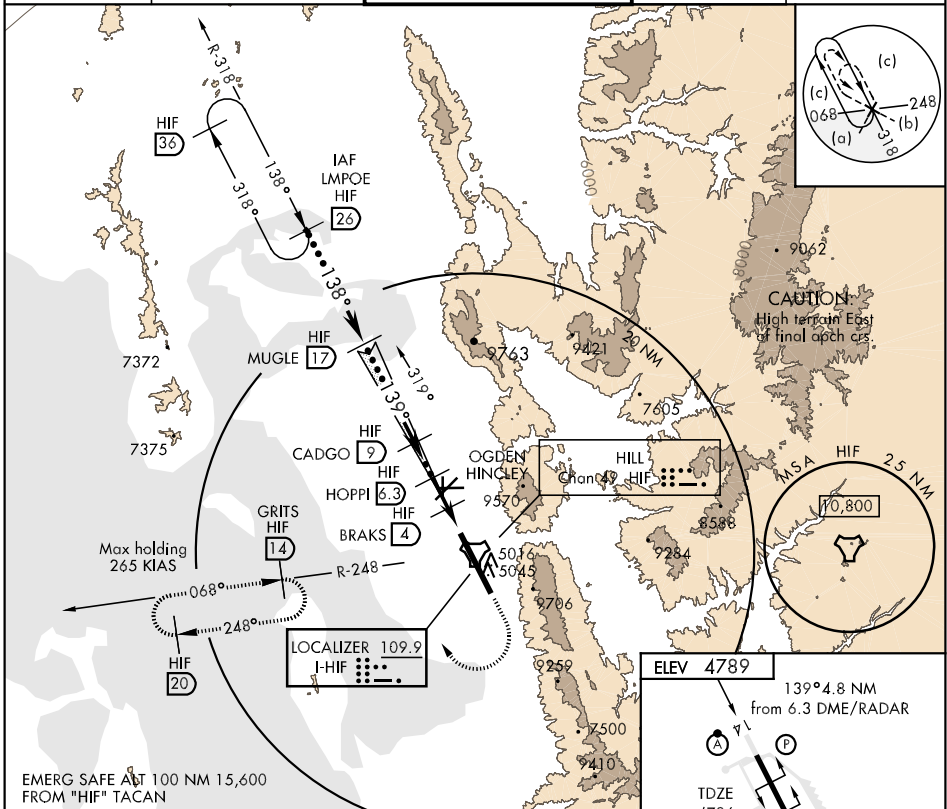
LOC I-HIF 109.9	APCH CRS 139°	Rwy Idg 13,508 TDZE 4786 Arpt Elev 4789
---------------------------	-------------------------	---

JAL-296 [USAF]

HILL AFB (KHIF)

▼ * When ALS inop, increase RVR to 40 and vis to 3/8 mile. ALSF-2 MISSED APPROACH: To 5500, then climbing right turn to 7900 out HIF R-248 to GRITS and hold.
 ** When ALS inop, increase RVR to 50 and vis to 1 mile.
 *** Circling not authorized NE of Rwy 14-32.

ATIS ★ 134.925 397.9	SALT LAKE CITY APP CON 121.1 319.25	HILL TOWER 127.15 263.15	GND CON 121.6 275.8	CLNC DEL 124.1 335.8
--------------------------------	---	------------------------------------	-------------------------------	--------------------------------



CATEGORY	C	D	E
S-ILS 14 *	4986/24	200	(200-1/2)
S-LOC 14 **	5040/40	254	(300-3/4)
CIRCLING ***	5240-1 1/2 451 (500-1 1/2)	5340-2	551 (600-2)

FAF to MAP 4.3 NM					
Knots	120	140	160	180	200
Min:Sec	2:09	1:51	1:37	1:26	1:17

OGDEN, UTAH
Amdt 2 08241

41°07'N-111°58'W

HILL AFB (KHIF)

HI-ILS RWY 14

SW-4, 22 OCT 2009 to 19 NOV 2009

SW-4, 22 OCT 2009 to 19 NOV 2009