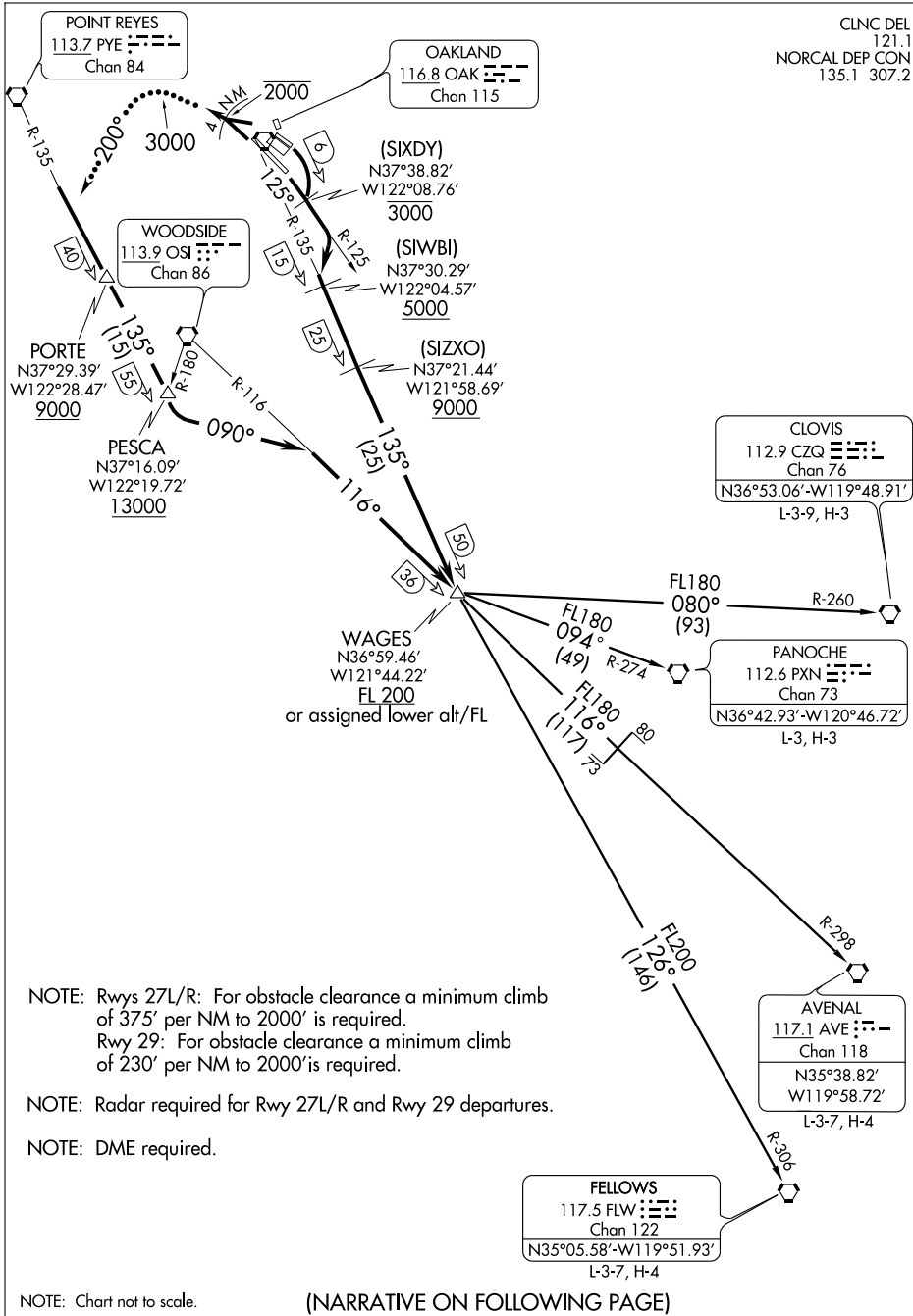


# SKYLINE THREE DEPARTURE

CLNC DEL 121.1  
NORCAL DEP CON 135.1 307.2



SW-2, 22 OCT 2009 to 19 NOV 2009

SW-2, 22 OCT 2009 to 19 NOV 2009

NOTE: Rwy 27L/R: For obstacle clearance a minimum climb of 375' per NM to 2000' is required.  
Rwy 29: For obstacle clearance a minimum climb of 230' per NM to 2000' is required.

NOTE: Radar required for Rwy 27L/R and Rwy 29 departures.

NOTE: DME required.

NOTE: Chart not to scale.

(NARRATIVE ON FOLLOWING PAGE)

# SKYLINE THREE DEPARTURE