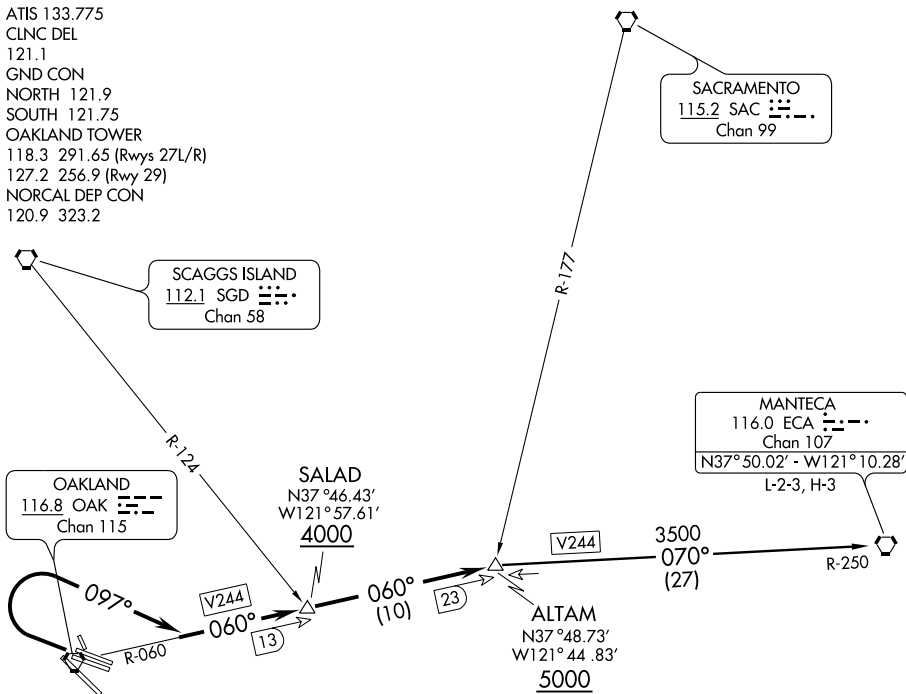


(SALAD1.ALTAM) 09127
SALAD ONE DEPARTURE

OAKLAND/METROPOLITAN OAKLAND INTL (O.A.K.)
 SL-294 (FAA) OAKLAND, CALIFORNIA

ATIS 133.775
 CLNC DEL
 121.1
 GND CON
 NORTH 121.9
 SOUTH 121.75
 OAKLAND TOWER
 118.3 291.65 (Rwys 27L/R)
 127.2 256.9 (Rwy 29)
 NORCAL DEP CON
 120.9 323.2



SW-2, 22 OCT 2009 to 19 NOV 2009

SW-2, 22 OCT 2009 to 19 NOV 2009

TAKE-OFF MINIMUMS

Rwys 9L/R, 11, 15, 29, 33: not authorized.
 Rwy 27L/R: 2100-3 or standard with a minimum climb of 270' per NM to 2000.

NOTE: For use 2200-0600L.

NOTE: For Cat A/B prop aircraft only.

NOTE: Chart not to scale.



DEPARTURE ROUTE DESCRIPTION

TAKE-OFF RUNWAY 27 L/R: Climbing right turn heading 097° to intercept and proceed via OAK VORTAC R-060 (V28-109-244-392) to ALTAM INT. Cross SALAD INT/OAK 13 DME at or above 4000, cross ALTAM INT/OAK 23 DME at or above 5000. Then via transition or assigned route. Expect clearance to filed altitude 10 minutes after departure.

MANTECA TRANSITION (SALAD1.ECA): From over ALTAM INT via ECA R-250 to ECA VORTAC.

SALAD ONE DEPARTURE
 (SALAD1.ALTAM) 09127

OAKLAND, CALIFORNIA
 OAKLAND/METROPOLITAN OAKLAND INTL (O.A.K.)