

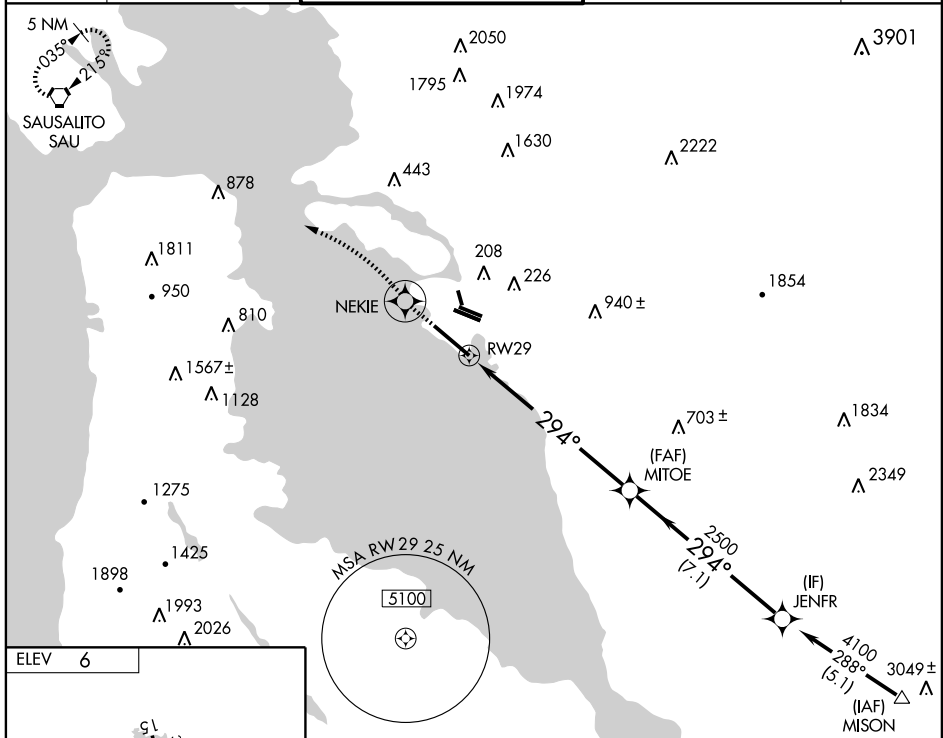
RNAV (GPS) RWY 29

OAKLAND/METROPOLITAN OAKLAND INTL (OAK)

APP CRS	Rwy Idg	10000
294°	TDZE	6
	Apt Elev	6

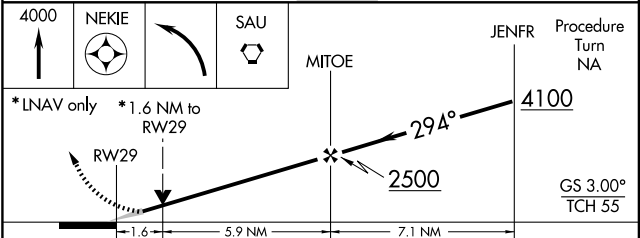
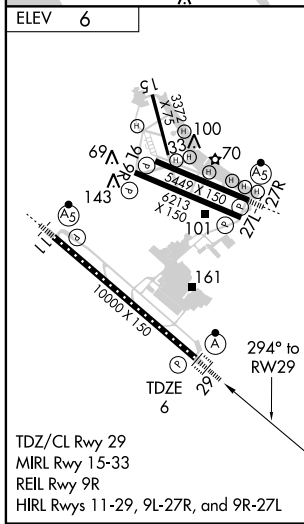
V	GPS or RNP-0.3 required. DME/DME RNP-0.3 NA. Baro-VNAV NA below -15°C (5°F).	ALSF-2	MISSED APPROACH: Climb to 4000 direct NEKIE WP, then left turn direct SAU VORTAC and hold.
NA	For inoperative ALSF, increase LNAV/VNAV Cat. D		
W	visibility to RVR 5000.		

ATIS	NORCAL APP CON	OAKLAND TOWER	GND CON	CLNC DEL
133.775	125.35 310.8 354.1	(Rwys 9-27, 15-33) 118.3 291.65 (Rwy 11-29) 127.2 256.9	(Rwys 9-27, 15-33) 121.9 (Rwy 11-29) 121.75	121.1



SW-2, 22 OCT 2009 to 19 NOV 2009

SW-2, 22 OCT 2009 to 19 NOV 2009



CATEGORY	A				B				C				D											
GLS PA DA	NA																							
LNAV/VNAV DA	300/24								294 (300-½)								300/40				294 (300-¾)			
LNAV MDA	580/24				574 (600-½)				580/50				574 (600-1)				580/60				574 (600-1¼)			
CIRCLING	580-1				574 (600-1)				580-1½				574 (600-1½)				580-2				574 (600-2)			