

MANTECA ONE ARRIVAL

ST-294 (FAA)

METROPOLITAN OAKLAND INTL

OAKLAND, CALIFORNIA

600Z MON 19 OCT 2009 22 22 'Z-WS

COALDALE TRANSITION (OAL.ECA1): From over OAL VORTAC via OAL R-250 and ECA R-068 to ECA VORTAC. Thence...

MINA TRANSITION (MVA.ECA1): From over MVA VORTAC via MVA R-230 and ECA R-068 to ECA VORTAC. Thence...

MUSTANG TRANSITION (FMG.ECA1): From over FMG VORTAC via FMG R-182 and ECA R-068 to ECA VORTAC. Thence...

... From over ECA VORTAC via ECA R-229 to LOCKE INT, then via SGD R-107 to UPEND INT. Expect vectors to the final approach course.

LOST COMMUNICATIONS: Depart UPEND INT via SGD R-107 to intercept and proceed via SAU R-035 to COMMO INT.

SCAGS ISLAND
112.1 SGD Chon 58

UPEND
N38°01.92' - W122°05.82'
W122°05.82'

COMMO
N37°52.45' - W122°29.52'
W122°29.52'

LOCKE
N37°42.81' - W121°30.58'
W121°30.58'

MANTECA
116.0 ECA Chon 107
N37°50.02' - W121°10.28'
W121°10.28'

LINDEN
114.8 LIN Chon 95

MAMIE
N37°50.42' - W121°03.99'
W121°03.99'

WRAPS
N37°51.48' - W120°47.03'
W120°47.03'

CUBIC
N38°29.95' - W120°04.95'
W120°04.95'

SAUSALITO
116.2 SAU Chon 109

SAN FRANCISCO
115.8 SFO Chon 105

SHARR
N37°47.81' - W121°16.52'
W121°16.52'

DUGLE
N37°51.90' - W120°40.07'
W120°40.07'

BIFFY
N37°53.09' - W120°19.81'
W120°19.81'

JOFAY
N37°55.72' - W119°30.76'
W119°30.76'

MATEE
N37°54.37' - W119°56.77'
W119°56.77'

HERBE
N38°02.82' - W119°32.87'
W119°32.87'

MINA
115.1 MVA Chon 98
N38°33.92' - W118°01.97'
W118°01.97'

SAUSALITO
116.2 SAU Chon 109

SAN FRANCISCO
115.8 SFO Chon 105

SHARR
N37°47.81' - W121°16.52'
W121°16.52'

DUGLE
N37°51.90' - W120°40.07'
W120°40.07'

BIFFY
N37°53.09' - W120°19.81'
W120°19.81'

JOFAY
N37°55.72' - W119°30.76'
W119°30.76'

MATEE
N37°54.37' - W119°56.77'
W119°56.77'

HERBE
N38°02.82' - W119°32.87'
W119°32.87'

MINA
115.1 MVA Chon 98
N38°33.92' - W118°01.97'
W118°01.97'

SAUSALITO
116.2 SAU Chon 109

SAN FRANCISCO
115.8 SFO Chon 105

SHARR
N37°47.81' - W121°16.52'
W121°16.52'

DUGLE
N37°51.90' - W120°40.07'
W120°40.07'

BIFFY
N37°53.09' - W120°19.81'
W120°19.81'

JOFAY
N37°55.72' - W119°30.76'
W119°30.76'

MATEE
N37°54.37' - W119°56.77'
W119°56.77'

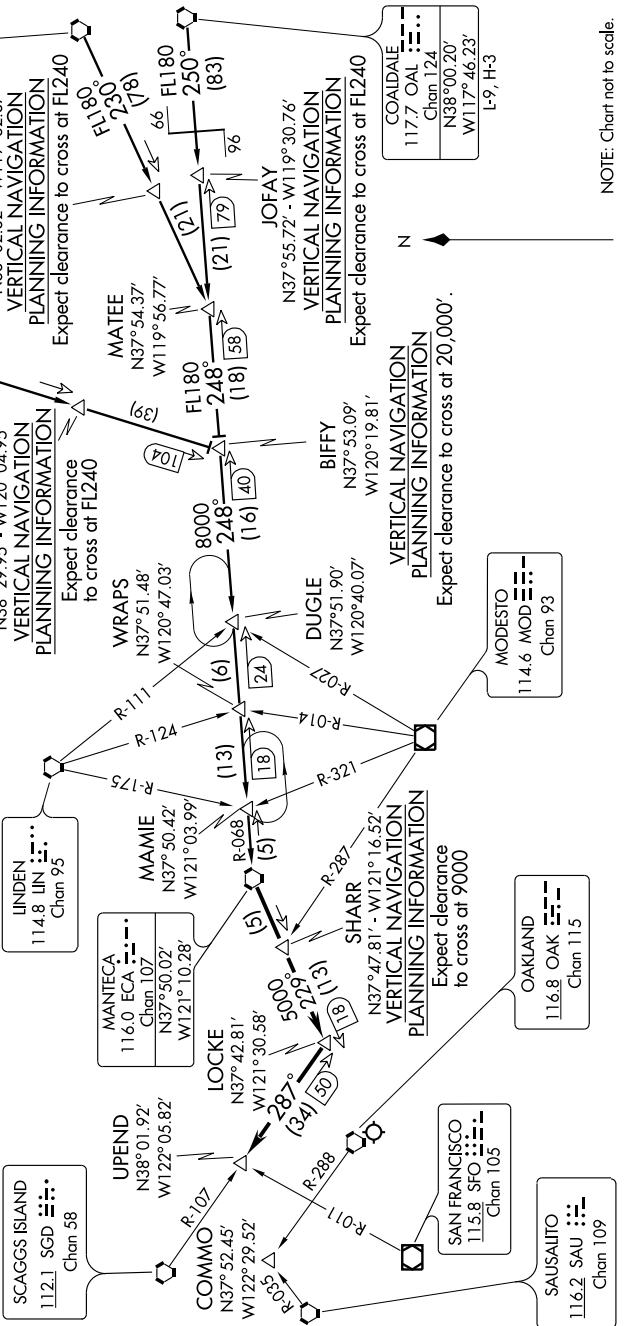
HERBE
N38°02.82' - W119°32.87'
W119°32.87'

MINA
115.1 MVA Chon 98
N38°33.92' - W118°01.97'
W118°01.97'

MODESTO
114.6 MOD Chon 93

COALDALE
117.7 OAL Chon 124
N38°00.20' - W117°46.23'
W117°46.23'

COALDALE
117.7 OAL Chon 124
N38°00.20' - W117°46.23'
W117°46.23'



NOTE: Chart not to scale.

MANTECA ONE ARRIVAL

OAKLAND, CALIFORNIA

METROPOLITAN OAKLAND INTL

SW-2, 22 OCT 2009 to 19 NOV 2009