

ILS RWY 29 (CAT III)

OAKLAND/METROPOLITAN OAKLAND INTL (OAK)

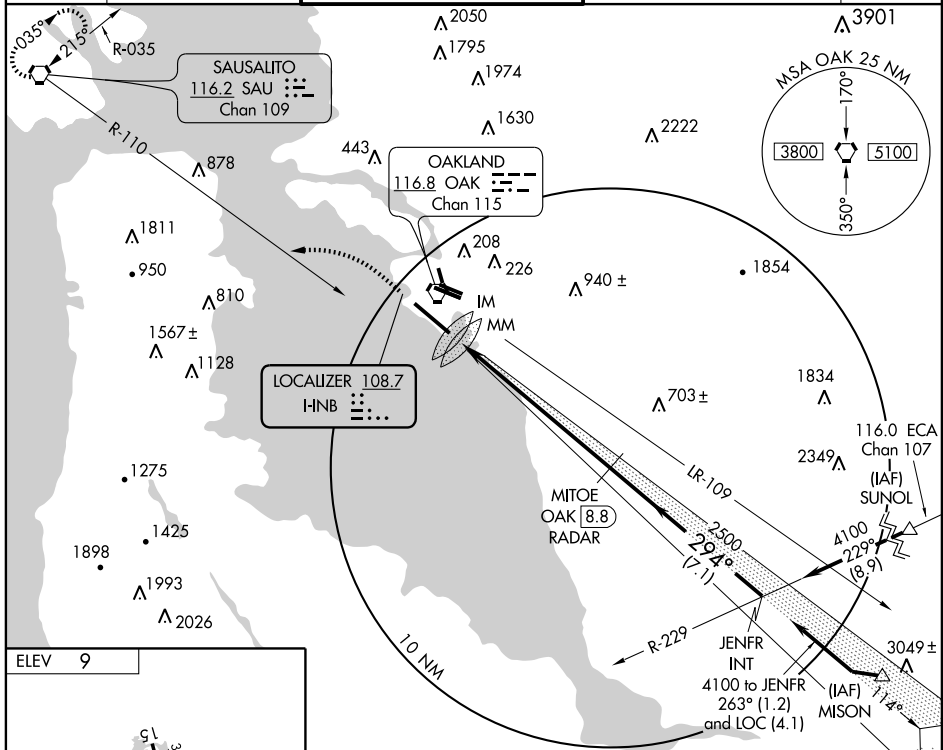
LOC I-INB 108.7	APP CRS 294°	Rwy Idg 10000	TDZE 9	Apt Elev 9
---------------------------	------------------------	------------------	-----------	---------------

Obstructions in the missed approach area require a rate of climb of at least 300 FPM/100K, 450 FPM/150K, 600 FPM/200K to 600 feet, no wind conditions.

ALSf-2

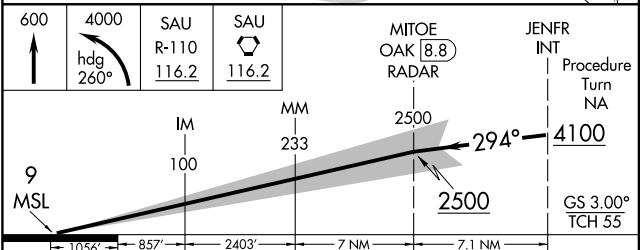
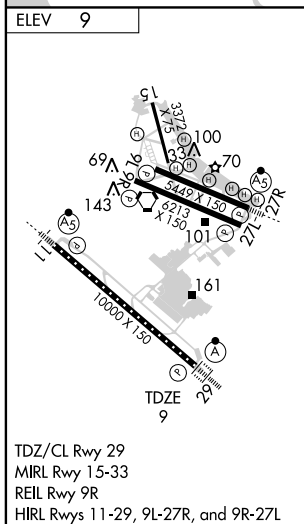
MISSED APPROACH: Climb to 600 then climbing left turn to 4000 via heading 260° and SAU R-110 to SAU VORTAC and hold.

ATIS 133.775	NORCAL APP CON 125.35 310.8 354.1	OAKLAND TOWER (Rwys 9-27, 15-33) (Rwy 11-29) 118.3 291.65 127.2 256.9	GND CON (Rwys 9-27, 15-33) (Rwy 11-29) 121.9 121.75	CLNC DEL 121.1
------------------------	---------------------------------------------	------------------------------------------------------------------------------------	------------------------------------------------------------------	--------------------------



SW-2, 22 OCT 2009 to 19 NOV 2009

SW-2, 22 OCT 2009 to 19 NOV 2009



CATEGORY	A	B	C	D
S-ILS 29		CAT IIIa	RVR 07	
S-ILS 29		CAT IIIb	RVR 06	
S-ILS 29		CAT IIIc	NA	

CATEGORY III ILS - SPECIAL AIRCREW & AIRCRAFT CERTIFICATION REQUIRED