

RNAV (GPS) RWY 30

NORTH PLATTE RGNL AIRPORT LEE BIRD FIELD (LBF)

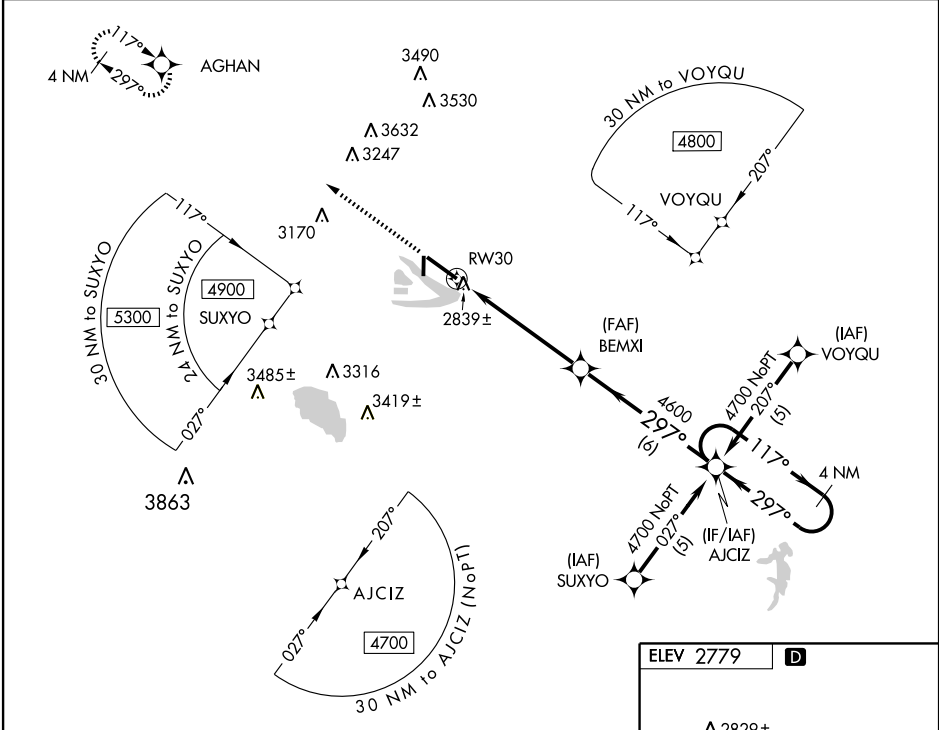
WAAS CH 60915 W30A	APP CRS 297°	Rwy ldg TDZE Apt Elev	8000 2771 2779
---------------------------------	------------------------	-----------------------------	---



MISSED APPROACH: Climb to 4900 direct AGHAN and hold.

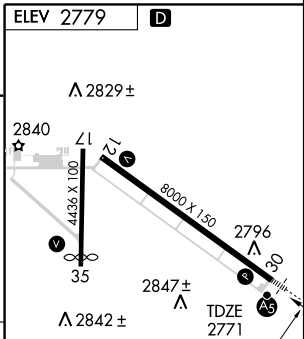
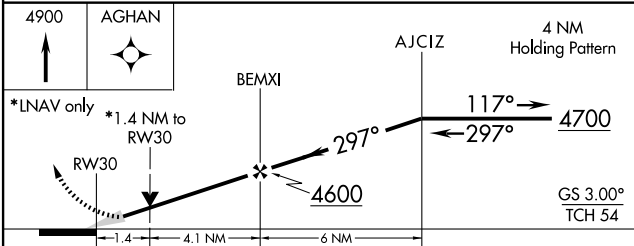
BARO VNAV NA below -20°C (-4°F).
DME/DME RNP-0.3 NA.
For inoperative MALSR increase LPV visibility to 1 all Cats.

ASOS 118.425	DENVER CENTER 132.7 397.85	CLNC DEL 132.7	UNICOM 123.0 (CTAF) 0
------------------------	--------------------------------------	--------------------------	---------------------------------



NC-2, 22 OCT 2009 to 19 NOV 2009

NC-2, 22 OCT 2009 to 19 NOV 2009



CATEGORY	A	B	C	D
LPV DA		3050-½	279 (300-½)	
LNAV/VNAV DA		3180-1	409 (500-1)	
LNAV MDA	3280-½ 509 (600-½)		3280-1 509 (600-1)	
CIRCLING	3360-1½ 581 (600-1½)	3380-1½ 601 (700-1½)	3400-1¾ 621 (700-1¾)	3400-2 621 (700-2)

HIRL Rwy 12-30 1
REIL Rwy 35 1
MIRL Rwy 17-35 1

RNAV (GPS) RWY 30