

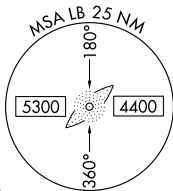
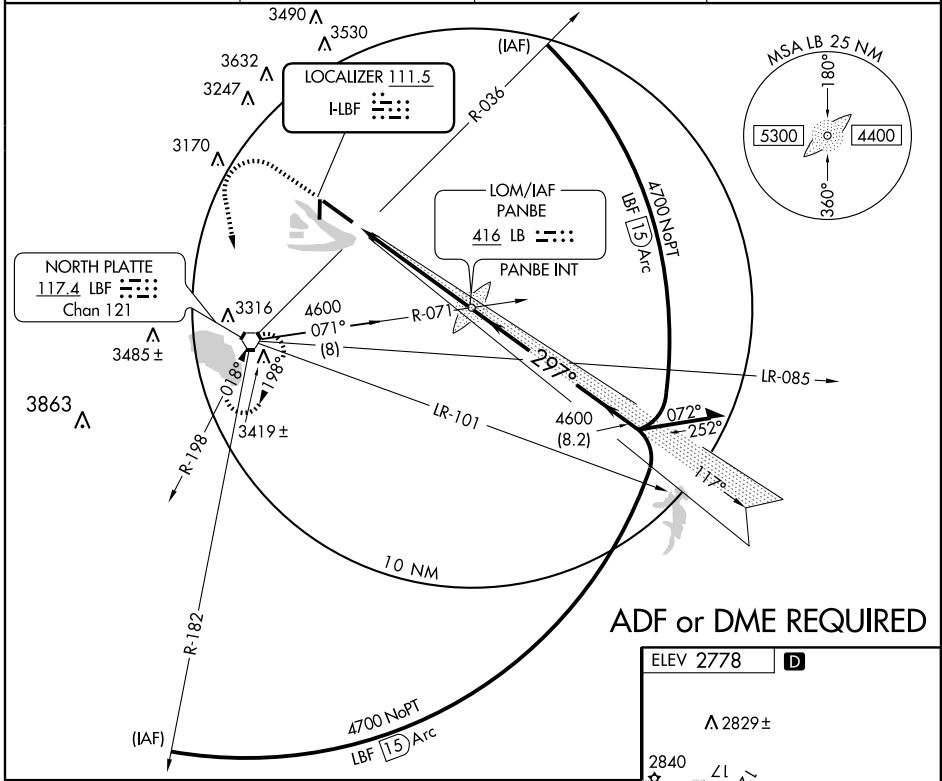
ILS or LOC RWY 30

NORTH PLATTE RGNL AIRPORT LEE BIRD FIELD (LBF)

LOC I-LBF 111.5	APP CRS 297°	Rwy Idg TDZE Apt Elev	8000 2770 2778
---------------------------	------------------------	-----------------------------	---

	MALSR	MISSED APPROACH: Climb to 4900 then left turn direct LBF VORTAC and hold.
--	-------	---

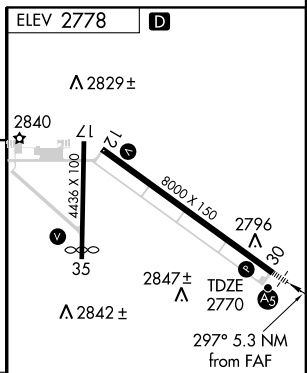
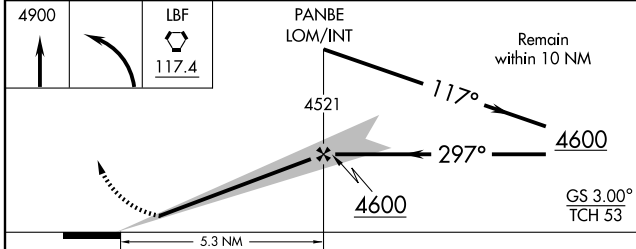
ASOS 118.425	DENVER CENTER 132.7 397.85	CLNC DEL 132.7	UNICOM 123.0 (CTAF)
------------------------	--------------------------------------	--------------------------	-------------------------------



NC-2, 22 OCT 2009 to 19 NOV 2009

NC-2, 22 OCT 2009 to 19 NOV 2009

ADF or DME REQUIRED



CATEGORY	A	B	C	D
S-ILS 30	2970-1/2 200 (200-1/2)			
S-LOC 30	3200-1/2 430 (500-1/2)	3200-3/4 430 (500-3/4)	3200-1 430 (500-1)	3200-1 430 (500-1)
CIRCLING	3340-1 562 (600-1)	3340-1 1/2 562 (600-1 1/2)	3360-2 582 (600-2)	3360-2 582 (600-2)

HIRL Rwy 12-30	
REIL Rwy 35	
MIRL Rwy 17-35	
FAF to MAP 5.3 NM	
Knots	60 90 120 150 180
Min:Sec	5:18 3:32 2:39 2:07 1:46