

NORFOLK, VIRGINIA

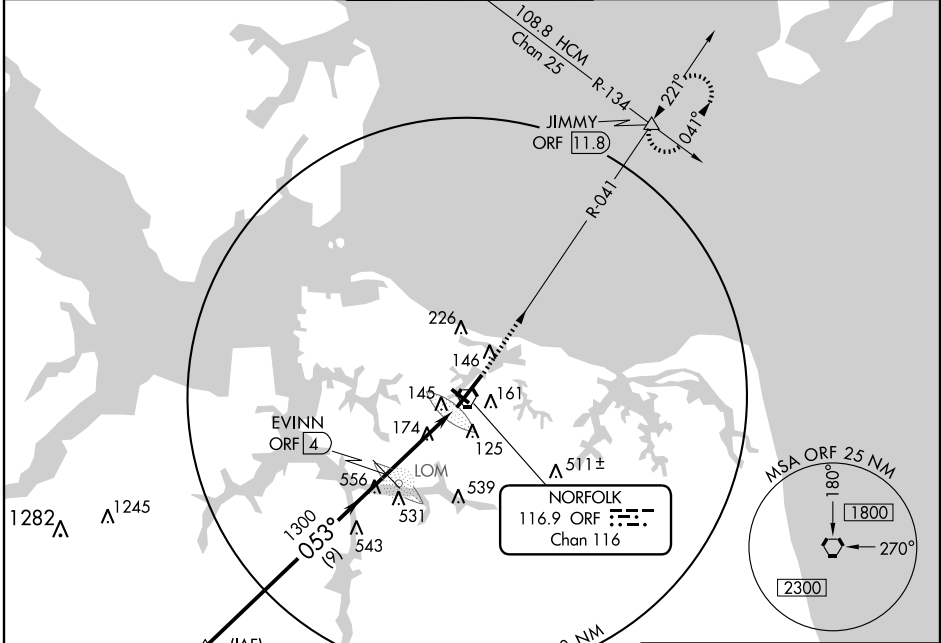
AL-291 (FAA)

VOR/DME RWY 5 NORFOLK INTL (ORF)

VORTAC ORF 116.9 Chan 116	APP CRS 053°	Rwy Idg TDZE 26 Apt Elev 26	8001
---	------------------------	---	-------------

<p>Cat D S-5 visibility increased to RVR 6000 for inoperative MALSRS.</p>	<p>MALSRS</p>	<p>MISSED APPROACH: Climb to 2000 via ORF R-041 to JIMMY Int/11.8 DME and hold.</p>		
			<p>ATIS 127.15</p>	<p>NORFOLK APP CON 118.9 353.7</p>

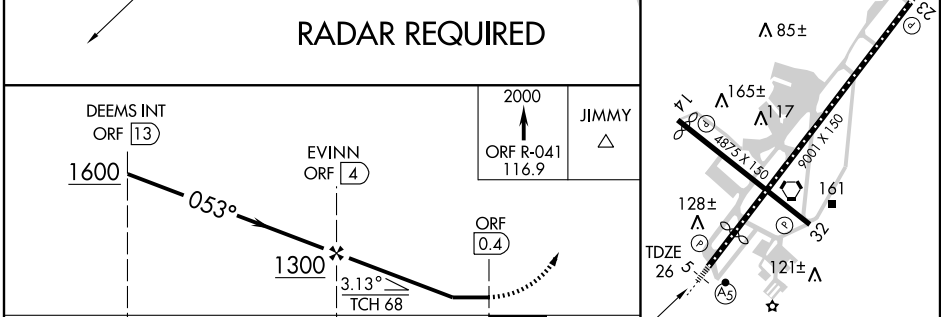
ATIS 127.15	NORFOLK APP CON 118.9 353.7	NORFOLK TOWER 120.8 257.8	GND CON 121.9	CLNC DEL 118.5
-----------------------	---------------------------------------	-------------------------------------	-------------------------	--------------------------



NE-3, 22 OCT 2009 to 19 NOV 2009

NE-3, 22 OCT 2009 to 19 NOV 2009

ELEV 26	D
---------	----------



CATEGORY	A	B	C	D
S-5	480/40	454 (500-¾)		480/50 454 (500-1)
CIRCLING	520-1	494 (500-1)	540-1½ 514 (600-1½)	580-2 554 (600-2)

053° 3.6 NM from FAF

TDZ/CL Rwy 5
REIL Rwy 14 and 32
HIRL Rwy 5-23
MIRL Rwy 14-32

NORFOLK, VIRGINIA
Amdt 4C 09015

36°54'N - 76°12'W

NORFOLK INTL (ORF) VOR/DME RWY 5