

NORFOLK, VIRGINIA

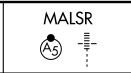
AL-291 (FAA)

VOR RWY 23

NORFOLK INTL (ORF)

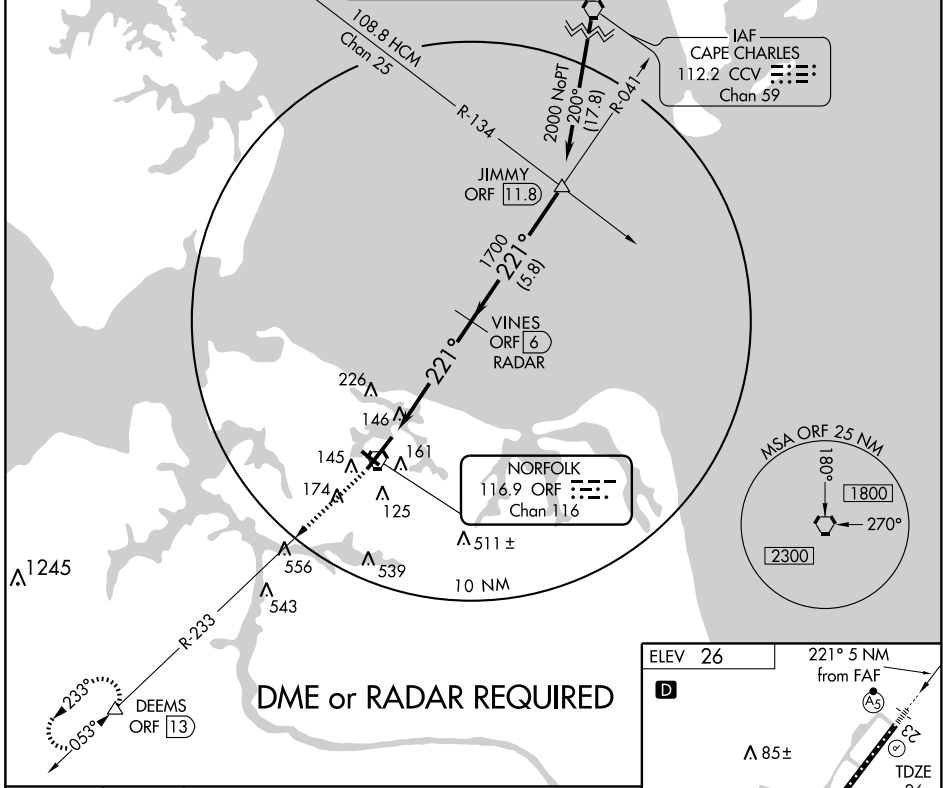
VORTAC ORF 116.9 Chan 116	APP CRS 221°	Rwy Idg TDZE 26 Apt Elev 26	9001
---	------------------------	---	-------------

▼ All categories S-23 visibilities increased ¼ mile for inoperative MALSR.



MISSED APPROACH: Climb to 2000 via ORF R-233 to DEEMS Int/ORF 13 DME and hold.

ATIS 127.15	NORFOLK APP CON 118.9 353.7	NORFOLK TOWER 120.8 257.8	GND CON 121.9	CLNC DEL 118.5
-----------------------	---------------------------------------	-------------------------------------	-------------------------	--------------------------



IAF
CAPE CHARLES
112.2 CCV
Chan 59

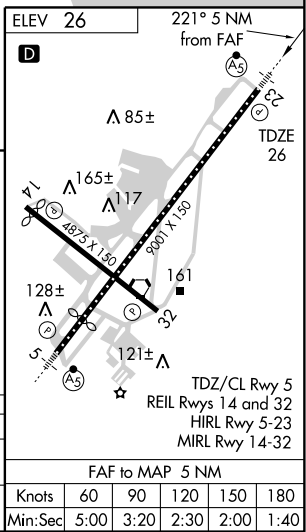
NORFOLK
116.9 ORF
Chan 116

MSA ORF 25 NM
180°
1800
270°
2300

NE-3, 22 OCT 2009 to 19 NOV 2009

NE-3, 22 OCT 2009 to 19 NOV 2009

2000 ↑ ORF R-233 116.9	DEEMS △	VINES ORF 6 RADAR	JIMMY ORF 11.8	
ORF 1		2000		
5 NM		5.8 NM		
≤ 3.05° TCH 55		Procedure Turn NA		
CATEGORY	A	B	C	D
S-23	420-¾ 394 (400-¾)		420-1 394 (400-1)	
CIRCLING	520-1 494 (500-1)		540-1½ 514 (600-1½)	
			580-2 554 (600-2)	



NORFOLK, VIRGINIA
Amdt 8C 09015

36°54'N - 76°12'W

NORFOLK INTL (ORF) VOR RWY 23

Knots	60	90	120	150	180
Min:Sec	5:00	3:20	2:30	2:00	1:40