

RNAV (GPS) RWY 32

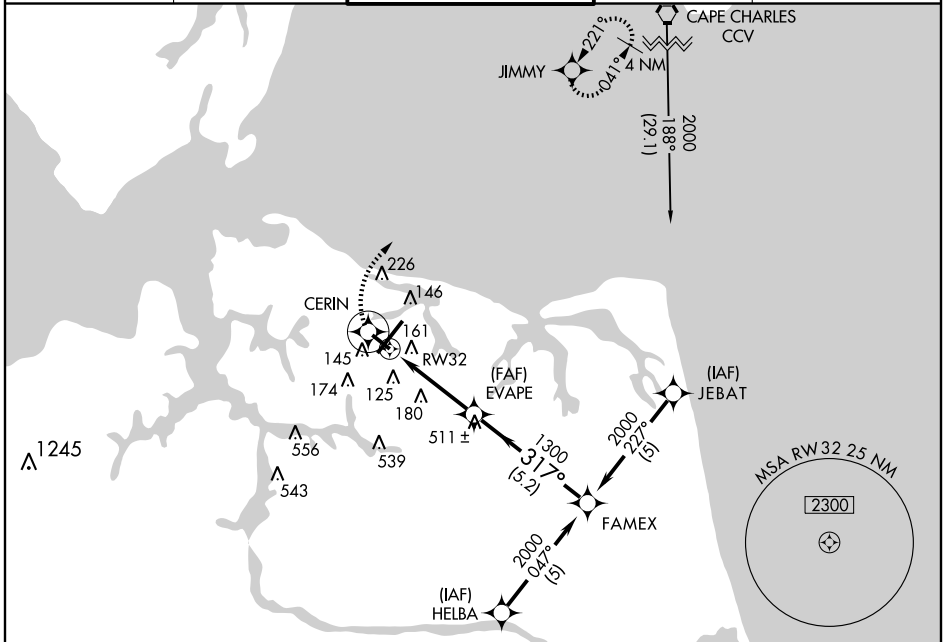
NORFOLK INTL (ORF)

APP CRS 317°	Rwy Idg TDZE Apt Elev	4875 25 26
------------------------	-----------------------------	---------------------------------------

Baro-VNAV NA below -15°C (5°F).
GPS or RNP-0.3 required.
DME/DME RNP-0.3 NA.

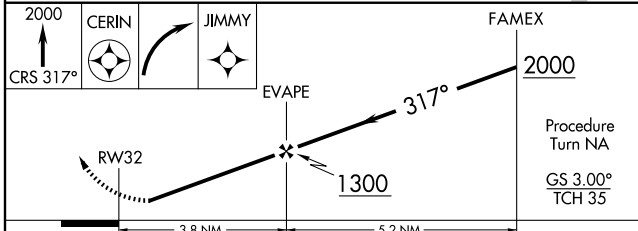
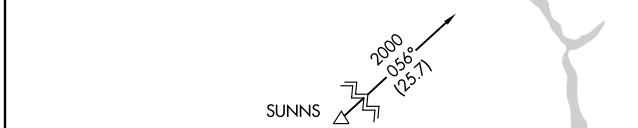
MISSED APPROACH: Climb to 2000 via 317° course to CERIN WP then right turn direct JIMMY WP and hold.

ATIS 127.15	NORFOLK APP CON 118.9 353.7	NORFOLK TOWER 120.8 257.8	GND CON 121.9	CLNC DEL 118.5
-----------------------	---------------------------------------	-------------------------------------	-------------------------	--------------------------



NE-3, 22 OCT 2009 to 19 NOV 2009

NE-3, 22 OCT 2009 to 19 NOV 2009



CATEGORY	A			
GLS PA DA	NA			
LNAV/VNAV DA	420-1½		395 (400-1½)	
LNAV MDA	440-1	415 (500-1)	440-1¼	415 (500-1¼)
CIRCLING	520-1½	494 (500-1½)	514 (600-1½)	554 (600-2)

